



INDIAN NOTICES TO MARINERS



EDITION NO. 02 DATED 16 JAN 2011

(CONTAINS NOTICES 042 TO 053)

REACH US 24 x 7



in的角度@nic.in
msis-inho-navy@nic.in



+91-135-2748373



National Hydrographic Office
107-A, Rajpur Road
Dehradun – 248001
INDIA



Joint Director of Hydrography
Maritime Safety Information Services
+91- 135 - 2747360-65

WWW

www.hydrobharat.nic.in

CONTENTS

<u>Section No.</u>	<u>Title</u>
I	List of Charts Affected
II	Permanent Notices
III	Temporary and Preliminary Notices
IV	Marine Information
V	Radio Navigational Warnings in force
VI	Corrections to Sailing Directions
VII	Corrections to List of Lights
VIII	Corrections to List of Radio Signals
IX	Reporting of Navigational Dangers

(PUBLISHED ON NHO WEBSITE ON 1ST & 16TH OF EVERY MONTH)

FEEDBACK: msis-inho-navy@nic.in



INSIST ON INDIAN CHARTS AND
PUBLICATIONS
Original, Authentic and Up-to-Date



© Govt. of India Copyright

No permission is required to make copies of these Notices. However, such copies are not to be commercially sold.

II

MARINER'S OBLIGATION AND A CHART MAKER'S PLEA

Observing changes at sea proactively and reporting them promptly to the concerned charting agency, is an obligation that all mariners owe to the entire maritime community towards SOLAS. Mariners are requested to notify the Chief Hydrographer to the Government of India at the above mentioned address/fax number/ E mail address immediately on discovering new or suspected dangers to navigation, changes/defects pertaining to navigational aids, and short comings in Indian charts/publications. The Hydrographic Note [Form IH – 102] is a convenient form to notify such changes. Specimen form is attached at Section IX with this notice. Also visit our website for downloading and filling up instructions for Hydrographic Note.

**Chief Hydrographer
to the Government of India**



III

EXPLANATORY NOTES

Corrections to Charts and Publications. Section I comprises List of Charts affected by the notices contained in this edition. Whereas sections II and III contain information for correcting the charts and publications. Mariners should insist on corrected charts from their chart distributors/agents.

- (a) Geographical positions given are in the horizontal datum of the current edition of the chart, unless otherwise stated.
- (b) Bearings are true, reckoned clockwise from 000° to 359°. Bearings to lights are from seaward.
- (c) Symbols referred to, are those shown on the chart INT 1 (5020).
- (d) Alterations to depth contours, deletion of depths to make way for new detail, etc; are not normally mentioned, unless they have some navigational significance.
- (e) Blocks and notes, if any, accompanying the Notices in Sections II and III are placed after Section IX.

Temporary and Preliminary Notices. These are indicated by (T) and (P) respectively after the Notice number and are placed in Section III. SI Nos. of those in force are published quarterly on 01 Jan, 01 Apr, 01 Jul and 01 Oct, and their text is published in Annual Edition of Indian Notices to Mariners. They should be inserted in pencil, by the user, on receipt.

Source of Information. A star preceding the number of a Notice indicates that the notice is promulgated by INHO based on original information received.

Sailing Directions. Corrections for the Sailing Directions (Pilots) are given in Section VI.

Lights. Corrections to Indian list of Lights are given in Section VII, where affected Light List number is quoted.

- (a) These corrections should be incorporated as per instructions given on page XI of the list of Lights.
- (b) Such correction notices to list of lights may be published in either an earlier or a later Edition of N to M than the Edition containing the Notice to the chart correction.
- (c) The range of a light given is its nominal range. Its geographical range is given in parenthesis only if it is less than the nominal range.
- (d) A star indicates that the corresponding field is to be amended and all stars indicate that new light is to be inserted.

Radio Signals. The corrections in Section VIII should be cut and pasted in the appropriate volume of the List of Radio Signals.

Radio Navigational Warnings.

- (a) These are broadcast as serially numbered NAVAREA warnings by the concerned NAVAREA coordinator through GMDSS and Area Radio Broadcasts.
- (b) They contain important information affecting navigational safety, which cannot await the publication of the next edition of N to M.
- (c) It should be borne in mind that they may be based on reports which cannot always be verified before promulgation.
- (d) It is therefore necessary to be selective, and promulgate only the more important warnings to avoid over loading users; the less important information is included in the forthcoming edition of N to M or the Chart/publication concerned.

IV

Laws and Regulations. While in the interest of the safety of shipping, the Hydrographic Office makes every endeavor to include in its publications details of the laws and regulations of all countries pertaining to navigation, it must be clearly understood: -

- (a) That no liability whatsoever can be accepted for failure to publish details of any particular law or regulation and
- (b) That publication of details of a law or regulation is solely for the safety and convenience of shipping and implies no recognition of the International validity of the law or regulation.

Correction of Charts and Publications by the Users. Notices to Mariners contain important information concerning safety of navigation at sea, hence, they should be used to keep the specified charts and publications up-to-date.

Reliance on Charts and Associated Publications. While every effort is made by the Hydrographic Office to ensure the accuracy of the information on Charts and Publications before they are published, it should be appreciated that it may not always be complete and up-to-date. The mariner must be the final judge for the reliance he can place on the information available, bearing in mind his particular circumstances, local pilotage guidance and judicious use of available navigational aids.

Use of Global Positioning System (WGS 84) positions.

- (a) The positions of hydrographic objects shown on most of the Indian charts and publications are in Everest datum. However, the positions of vessels obtained from Global Positioning System (GPS) are on World Geodetic System 1984 datum. There will always exist a difference in the position values obtained by visual fixing (Everest Datum) and GPS position (WGS 84 datum).
- (b) Wherever these differences have been ascertained, their average values are published as a Cautionary Note on the chart concerned, as shifts in Latitude and Longitude. Whilst plotting GPS positions on charts, the shift values as given on the chart must be applied, before making any assessment of the navigational situation vis-à-vis the other charted information.
- (c) These datum shift values are not uniform, particularly in areas off Andaman and Nicobar and Lakshadweep Islands, as these places are not linked to mainland network (Everest datum). Mariners are advised to use alternate source of position information such as Visual or Radar, particularly when closing the shore or navigating in the vicinity of dangers.

Source Data on Charts. All Indian charts contain specific information on their source of hydrographic data. In areas where the source data is very old, incomplete and less reliable, the mariner must use such charts with prudence. Mariner should always use the largest scale charts available for the area. Apart from being the most detailed, the larger scale charts are usually corrected first. Hydrographic information may be sparse on small scale charts. On such charts, a charted shoal may be in error as regards position, least depth and extent. Uncharted dangers may also exist, particularly in areas away from well-established routes. Mariners must exercise due caution.

Further Guidance. The Mariner's Hand Book (NP 100) gives full explanation on the use of charts and the type of information contained on charts. In their own interest, all users of charts should refer to it.

NEWLY PUBLISHED INDIAN CHARTS, ENC'S AND PUBLICATION

1. The new Indian Charts that are available for mariners in the market are as follows:-

<i>Chart No.</i>	<i>Date of Publication</i>	<i>Title, Limits & Description</i>	<i>Scale</i>	<i>Folio</i>	<i>Price</i>
2103	31-12-2010	DIGHI PORT <u>Limits</u> 18° 15'.50N; 72° 53'.00E. 18° 19'.80N; 72° 59'.90E.	12,500	3	Rs. 1527.00
2104	31-12-2010	KOLLAM PORT <u>Limits</u> 08° 50'.60N; 76° 31'.00E. 08° 55'.00N; 76° 37'.70E.	12,500	3	Rs. 1527.00

2. The forthcoming Indian Charts are as follows:-

<i>Chart No</i>	<i>Title</i>	<i>Scale</i>	<i>Remarks</i>
41 (INT 757)	ANDAMAN SEA	15,00,000	New Chart
301	APPROACHES TO HUGLI RIVER	1,50,000	New Edition
2020	MORMUGAO AND PANAJI	25,000	New Edition
2022 (INT 7345)	APPROACHES TO MORMUGAO	60,000	New Edition
2036	MURUD JANJIRA HARBOUR	25,000	New Edition
2038	RAJAPUR BAY AND VIJAYDURG HARBOUR	25,000	New Edition
2073	APPROACHES TO KUNDAPURA	37,500	New Edition
2077	HARNAI ANCHORAGE; PAVAS ANCHORAGE	30,000 25,000	New Edition
3501	KANKESANTURAI HARBOUR	12,500	New Chart

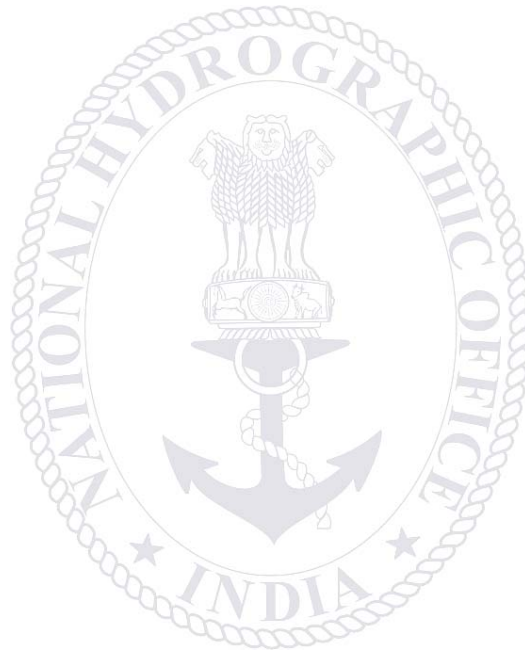
Availability of ENC'S.

The complete folios of Official Indian ENC'S are distributed worldwide through JEPPESEN MARINE (formerly C-MAP), UKHO and Norwegian Hydrographic Service. UKHO distributes Indian ENC'S through the world wide network of their agents and distributors. Updates are also made available as per the existing policy of the distributor. Mariners and other ENC users may contact the under mentioned for further details:

<p>The Chief Hydrographer to the Government of India National Hydrographic Office 107-A, Rajpur Road Dehradun- 248001 Uttarakhand, India Tele: +91-135- 2747365, Fax: +91-135-2748373 Email: inho-navy@nic.in msis-inho-navy@nic.in sales-inho-navy@nic.in Website: www.hydrobharat.nic.in</p>	<p>Director, JEPPESEN MARINE Jeppesen India Pvt. Ltd. 505, Raheja Arcade, Sector-11, CBD Belapur, Navi Mumbai 400614 India Ph: 91-22- 65103668 Fax: 91- 22- 67939504 Email: info@c-map.co.in Website: www.c-map.co.in</p>
--	---

VI

<p>United Kingdom Hydrographic Office Admiralty Way, Taunton, Somerset TA1 2DN, UK Tel: +44 (0) 1823 337900 Fax: +44 (0) 1823 330561, 1823 284077 Telex: 46274 Email: helpdesk@ukho.gov.uk Web site: www.ukho.gov.uk</p>	<p>Director General Norwegian Hydrographic Service, Postbox 60, 4001 Stavanger Telephone - +47 - 51 85 87 00 Fax - + 47 - 51 85 87 08 E-mail:-gerry.larsson-fedde@statkart.no Website: - www.primar.org</p>
---	--



SECTION – I

The list of charts affected by the Notices 042 to 053 contained in this edition are as follows:

CHART NUMBER	FOLIO NO.	NOTICE NO.
20	1	053(P)
21	2	043, 045, 047
22(INT752)	3	047
33	5	051
41	6	051
201	2	043
202	2	045
206	2	044
219	3	048
251(INT7318)	2	043, 045
255(INT7334)	3	047
259(INT7356)	3	048
260(INT7362)	3	046
268(INT7353)	4	049
271	2	043, 045
272	4	048
289	1	053(P)
291	2	043, 045
292(INT7021)	2	047
293(INT7022)	3	047
406	6	051
472(INT7032)	6	051
2003	3	048
2023	4	049
2032	3	042
2036	3	042
2053	3	048
3034	5	050

SECTION – II
PERMANENT NOTICES

***042/(02/11) Miscellaneous updates to charts**

Source: NHO Dehradun		
Chart	Previous Updates	Details
2032	141/10	Insert Chart No. 2103 and Magenta limit as follows: North: 18° 19′.80N., East: 72° 59′.90E South: 18° 15′.50N., West: 72° 53′.00E
2036	559/08	Insert Chart No. 2104 and Magenta limit as follows: North: 08° 55′.00N., East: 76° 37′.70E South: 08° 50′.60N., West: 76° 31′.00E

***043/(02/11) COAST OF PAKISTAN AND INDIA – Gora Chan Creek to Godia Creek – Wreck.**

Source: NAVAREA VIII 781/10

(HJ/1131/32)

Chart 21 [previous update 292/10]Insert  23° 37′.05N., 67° 58′.09E.**Chart 291** [previous update 292/10]Insert  23° 37′.05N., 67° 58′.09E.**Chart 251** [previous update 292/10]Insert  23° 37′.05N., 67° 58′.09E.**Chart 271** [previous update 292/10]Insert  23° 37′.08N., 67° 58′.08E.**Chart 201** [previous update N.E. 31 Aug 10]Insert  23° 37′.08N., 67° 58′.08E.***044/(02/11) INDIA – WEST COAST – Muldwarka Port – Coastline. Depths. Contour.**

Source: NHO Dehradun

(HJ/1130/09)

Chart 206 [previous update 032/11]

Insert accompanying block showing amendments to Coastline, Depths and Contours centered on: 20° 44′.55N., 70° 39′.48E.

***045/(02/11) INDIA – WEST COAST – Off Okha – Wreck.**

Source: NAVAREA VIII 022/11

(HJ/1131/21)

Wreck of MFV Vasundhara**Chart 21** [previous update 043/11]Insert  22° 35′.01N., 68° 21′.01E.**Chart 291** [previous update 043/11]Insert  22° 35′.01N., 68° 21′.01E.**Chart 271** [previous update 043/11]Insert  22° 35′.01N., 68° 21′.01E.**Chart 251** [previous update 043/11]Insert  22° 35′.01N., 68° 21′.01E.**Chart 202** [previous update 134/10]Insert  22° 35′.01N., 68° 21′.01E.

***046/(02/11) INDIA – WEST COAST – Kochi to Cape Comorin – Depths. Nature of Seabed.**

Source: NHO Dehradun

(HJ/930/93)

Chart 260(INT 7362) [previous update 141/10]

Insert	depth 4 ₆	09° 31′.78N., 76° 18′.30E.
	depth 8 ₁	(a) 09° 31′.30N., 76° 17′.40E.
	depth 4	(b) 09° 28′.73N., 76° 19′.00E.
	depth 15 ₁	(c) 09° 27′.55N., 76° 15′.41E.
	depth 17 ₃	09° 29′.84N., 76° 14′.06E.
	depth 21	(d) 09° 28′.55N., 76° 12′.09E.
	nature of the seabed, “soM.fS.bkSh”, centered on:	09° 31′.26N., 76° 12′.09E.
	nature of the seabed, “soM.bkSh”, centered on:	09° 27′.18N., 76° 14′.34E.
Substitute	depth 8 ₃ for depth 6 ₈	09° 27′.10N., 76° 18′.28E.
Delete	depth 6 ₇ , close N of:	(a) above
	depth 4 ₅ , close SW of:	(b) above
	depth 15 ₄ , close SE of:	(c) above
	depth 22 ₅ , close S of:	(d) above
	depth 14	09° 30′.35N., 76° 14′.45E.
	depth 2 ₇	09° 32′.39N., 76° 18′.38E.
	nature of the seabed, “M”, centered on:	09° 30′.96N., 76° 15′.77E.
	nature of the seabed, “M.bkSh”, centered on:	09° 27′.67N., 76° 16′.05E.

***047/(02/11) INDIA – WEST COAST – Off Mumbai – Wreck.**

Source: NAVAREA VIII 822/10

(HJ/1030/88)

Wreck of Trawler Varad Vinayak**Chart 21 [previous update 045/11]**

Insert	+++ PA	18° 33′.61N., 71° 00′.25E.
--------	--------	----------------------------

Chart 22 [previous update 204/10]

Insert	+++ PA	18° 33′.61N., 71° 00′.25E.
--------	--------	----------------------------

Chart 292 [previous update 257/10]

Insert	+++ PA	18° 33′.61N., 71° 00′.25E.
--------	--------	----------------------------

Chart 293 [previous update 258/10]

Insert	+++ PA	18° 33′.61N., 71° 00′.25E.
--------	--------	----------------------------

Chart 255 [previous update 217/10]

Insert	+++ PA	18° 33′.61N., 71° 00′.25E.
--------	--------	----------------------------

***048/(02/11) INDIA – WEST COAST – Beypore Anchorage – Wooden Poles. Breakwater. Boulders. Legends. Chimneys. Tower. Radar Beacon.**

Source: INS Investigator & INM 094/10

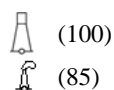
(HJ/1030/14)

Chart 2003 [previous update 294/08]

Insert	breakwater, single firm line, joining:	(a) 11° 09′.365N., 75° 47′.969E.
		(b) 11° 09′.272N., 75° 47′.817E.
		(c) 11° 09′.268N., 75° 47′.820E.
		(d) 11° 09′.359N., 75° 47′.974E.
	boulders, along:	(a) – (b) above
		(b) – (c) above

***048/(02/11) INDIA – WEST COAST – Bypore Anchorage – Wooden Poles. Breakwater. Boulders. Legends. Chimneys. Tower. Radar Beacon. (Continued)**

legend, “Ru”, along jetty joining:



Amend legend to, “Wooden Pole”, centered on:

Delete Wooden Pole



11° 09′.642N., 75° 48′.610E.
 11° 09′.641N., 75° 48′.625E.
 11° 11′.171N., 75° 49′.908E.
 11° 12′.266N., 75° 48′.442E.
 11° 12′.239N., 75° 48′.461E.
 11° 10′.240N., 75° 48′.974E.
 11° 09′.145N., 75° 47′.521E.
 11° 09′.305N., 75° 47′.717E.
 11° 10′.202N., 75° 48′.868E.

Chart 2053 [previous update 259/10]

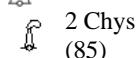
Extend South breakwater along with boulders, upto:

Delete Wooden Pole

11° 09′.27N., 75° 47′.82E.
 11° 09′.32N., 75° 47′.73E.
 11° 09′.16N., 75° 47′.53E.

Chart 219 [previous update 259/10]

Insert (100)



Delete Wooden Pole

Extend South breakwater along with boulders, upto:

11° 11′.17N., 75° 49′.91E.
 11° 12′.25N., 75° 48′.45E.
 11° 09′.10N., 75° 47′.63E.
 11° 09′.27N., 75° 47′.82E.

Chart 259 [previous update 141/10]

Insert 2 Chys (85)

Delete Wooden Pole

Extend South breakwater along with boulders, upto:

11° 12′.25N., 75° 48′.45E.
 11° 09′.20N., 75° 47′.65E.
 11° 09′.27N., 75° 47′.82E.

Chart 272 [previous update 258/10]

Insert radar beacon, Racon(G), at light:

11° 09′.4N., 75° 48′.4E.

***049/(02/11) INDIA – LAKSHADWEEP – Kavaratti Island – Wreck.**

Source: NAVAREA VIII 461/10

(HJ/1030/07)

Wreck of MV Nand Aparajita

Chart 268 (INT7353) [previous update N.E.31 Dec 09]

Insert PA

10° 32′.44N., 72° 37′.15E.

Chart 2023 [previous update 095/10]

Insert PA

10° 32′.44N., 72° 37′.15E.

***050/(02/11) INDIA – EAST COAST – Krishnapatnam Port – Legends.**

Source: Krishnapatnam Port Company Limited

(HJ/1029/49)

Chart 3034(Plan) [previous update 288/10]

Delete Legend, “(Under Construction)” (2009), centered on:

14° 14′.65N., 80° 07′.18E.

***051/(02/11) INDIA – ANDAMAN ISLANDS – LITTLE ANDAMAN ISLAND – Wreck.**

Source: NAVAREA VIII 736/10

(HJ/1028/07)

Wreck of Fishing Dingy**Chart 41** [previous update 262/10]

Insert



10° 29′.98N., 92° 34′.32E.

Chart 33 [previous update 262/10]

Insert



10° 29′.98N., 92° 34′.32E.

Chart 472 [previous update 445/08]

Insert



10° 29′.98N., 92° 34′.32E.

Chart 406 [previous update 363/08]

Insert



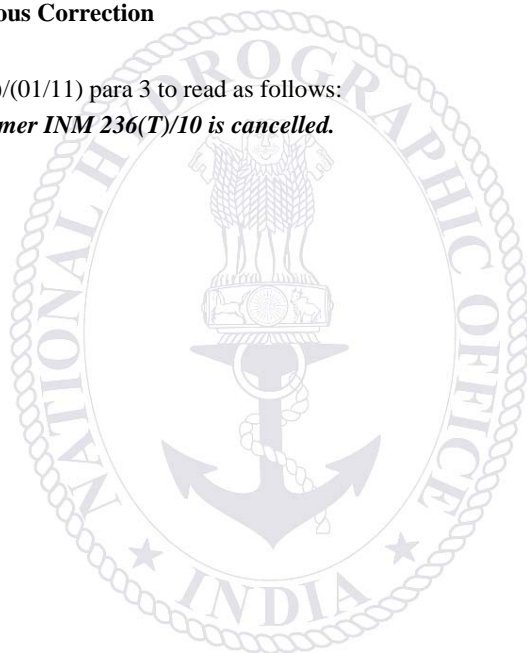
10° 29′.98N., 92° 34′.32E.

***052/(02/11) Miscellaneous Correction**

Source: NHO

Amend *INM 039(T)/(01/11)* para 3 to read as follows:

3. ***Former INM 236(T)/10 is cancelled.***



SECTION – III
TEMPORARY AND PRELIMINARY NOTICES

**053(P)/(02/11) UNITED ARAB EMIRATES - Jazō-rat Da-s North-eastwards - Abu-Al Bu- Khoosh Oilfield
– Oil Loading Terminal - Mooring buoy. Submarine pipeline.**

Source: BA Notice – 169(P)/11
(HJ/1132/56)

1. The Abu-Al Bu- Khoosh Oil Loading Terminal, in position 25° 29′·20N., 53° 08′·17E. (WGS84 Datum) is no longer in use and the associated mooring buoy and submarine pipeline will be removed.

Charts Affected – 20 - 289.



SECTION – IV
MARINE INFORMATION

MUMBAI NAVTEX COAST STATION

MSI Promulgation by Mumbai NAVTEX Coast Station position 19° 05'.00 N, 072° 50'.00 E is closed for maintenance.

(Source - NAVAREA VIII Warning 305/08)

Distribution of Indian Paper Charts and Nautical Publications

Indian Nautical Charts and Publications from National Hydrographic Office, India are now available globally. Details of overseas chart agents are as follows:-

<p>*JEPPESEN MARINE Jeppesen India Pvt. Ltd. 505, Raheja Arcade, Sector-11, CBD Belapur, Navi Mumbai 400 614 Ph: 91 22 65103668 Fax: 91 22 67939504 Email: info@c-map.co.in</p>	<p>*JEPPESEN MARINE Jeppesen Norway AS P.O. 212, N-4379, Egersund, Norway Ph: 0047 51 464700 Fax: 0047 51 464701 Email: info@c-map.no Site: www.c-map.no</p>	<p>C-Map US Commercial 133 Falmouth Road, Building 2, Postal Code: 02649, Mashpee, MA, America Ph: +1 (508) 477 8010 Fax: +1 (508) 539 4381 Email: info@c-map.com</p>
<p>C-Map (UK) Ltd. Systems House Delta Business Park Salterns Lane, Fareham, PO16 0QS, United Kingdom, Ph: +44 (0) 1329 517777 Fax: +44 (0) 1329 517778 Email: info@c-map.co.uk</p>	<p>Mari-Sys Pte Ltd. 20 Ayer Rajah Crescent, 08-21, SE 139964, Republic of Singapore Ph: +65 6776 1898 Email: info@mari-sys.com</p>	<p>Bogerd Martin NV, Oude Leeuwenrui 37 2000 Antwerp, Belgium Ph: +32 (3) 2134170 Fax: +32 (3) 2326167 Email: sales@martin.be Site: www.martin.be</p>
<p>Bogerd Martin Tianjin(China Branch) 2-B101 FTZ Hi-Tech Development Centre 131 Haibin 9 Road 300461 Tianjin China Ph: +86 22 257 62 721 Fax: +86 22 257 62 722 Email: charts-tj@martincn.com</p>	<p>C-Map Holland Paleiskade100 PO Box 7 1781 AR Den Helder, Holland Ph: +31 223 616 700 E Mail: CorMallie@chartworx.nl</p>	
<p>* Indicates C Map Norway AS has changed name to Jeppesen Marine Norway AS. Indicates C Map India has changed name to Jeppesen India.</p>		

List of Indian Chart Agents.

M/s OSA Books and Periodicals, R-246, Greater Kailash -I New Delhi - 110 048 Tel/Fax: 011-46557337, Mob: 9910891631, 9810705062 Email: ravipani@indiatimes.com	M/s Sterling Book House, 181, Dr. DN Road Fort, Mumbai – 400 001 Tel: 91-22-22612521, Fax: 91-22-22623551 Email : sbh@vsnl.com
M/s Global Charts & Nav. Aids Pvt. Limited 1A, Goa Mansion, Ground Floor 58, Dr. Sunderlal Bahl Path (Goa Street) Fort, Mumbai - 400 001 Tel: 91-22-22626318, 22626380, Fax: 91-22-22621488 Email: sales@bogerdmartin.com, sarmarin@vsnl.com	M/s EW Stevens & Co. (Pvt.) Ltd. Mackinnon Mackenzie Bldg, Ground Floor, 4 Shoorji Vallabhdas Marg, Mumbai-400 038 Tel: 91-22-22618567, Fax: 022-22619146 Email: ewsbom@bom3.vsnl.net.in
M/s C & C Marine Combine 25 Bank Street, 1 st Floor, Mumbai - 400 023 Tel: 91-22- 22660525, 22661937, 22672143 Fax: 91-22-22670896 Email: ccmarine@bom5.vsnl.net.in	M/s Maritime Charts and Publications New No. 221, Old No. 107, Unit No. F9, Hotel Chennai Palace, Angappa Naicken Street Chennai – 600001, Telefax : 044-42165008 Email: maritimeindia@airtelmail.in
M/s SVR Chart Agencies Door No.50-81-35/6, Santhipuram, Seetammapeta, Visakhapatnam-530 016 Tele Fax: 0891-2799471, Cell: 9440132553, 9849120988, 9885308200 Email : mahalakshmitravels@hotmail.com	M/s Jeppesen India Pvt. Ltd 505, Raheja Arcade, Sector 11 CBD, Belapur Navi Mumbai – 400 614 Tel: +91 22 5610 3668, Fax: +91 22 55939504 Mob: +9322238542 Email: raj_chakravorty@yahoo.com, info@c-map.co.in Website: www.c-map.co.in
M/s JM Maritime Services 24/24C Kavarana Building Ground Floor, Wadi Bunder P.D. Mellow Road, Mumbai – 400 009 Tel: +91 22 23736956/6907, Fax: 022 - 23725083 Cell: +91 9820788357 Email : jmms@mtnl.net.in, charts@ mtnl.net.in	M/S Inspire Shipping, 46a, Ashok Chamber, Broach Street, Masjid Bunder (E), Mumbai – 400 009 Fax : 022 – 27713146 Email : info@inspireship.com, pramod@inspireship.com
M/S Lift-O-Marine 20 Bhut Ghat Street (Near No. 3 N. S. Dock) Kolkata – 700043 Tel: +91-33-2439 5731/ 2482, Cell: +91-9331936587, 9830056801 Fax: +91-33-2439 2102, Email: liftomarine@yahoo.co.in	M/s Global Marine Infratech Pvt. Ltd. Siksha Sandan, Ground Floor, ND-7, VIP Area, IRC Village Bhubaneswar – 751015 Tel: +91-674-2550599, Fax: +91-674-2551899 Email: ashiskantha@gmiindia.in; Web: www.gmiindia.in

SECTION – V
NAVAREA - VIII WARNINGS IN FORCE

1. For details of NAVAREA limits and organisation/coordination, please refer to Notice No. 12 of the Special edition of Indian Notice to Mariners – 2008.

2. Navarea VIII Warnings Inforce as on 15 Jan 11.

2010 SERIES - 380 399 461 470 508 520 528 534 581 629 630 648 675 736 746 747 761 762
767 771 776 779 781 804 817 822 823 845 848

2011 SERIES - 005 008 009 010 013 017 019 021 022 024 025 026 028 029 030 031 032 033
034

3. NAVAREA VIII Warnings issued during the period from 01 Jan 11 to 15 Jan 11 (both dates inclusive) are as tabulated below:-

001. Self Cancelling. Best wishes for safe and prosperous voyage during 2011.
002. Self Cancelling. Western Part of Indian Ocean and Arabian Sea. Charts INT 71 INT 72 INT 73 INT 703 INT 705. Piracy. M/V attacked/possible mothership activities in following positions: 03-56N 059-33E 010754Z JAN M/V Attacked 03-08N 057-27E 022340Z JAN M/V York 02-33N 059-14E 020241Z JAN M/V York 14-51N 063-48E 012213Z JAN Pirate Action Group 17-52N 066-05E 020359Z JAN Pirate Action Group 2. Abandoned barge may be conducting mothership operations in position 02-31N 059-14E on 01 Jan 2011 at 2120 UTC. 3. Mariners to exercise extreme caution and keep 100 miles clear of this position.
003. Tanzania East Coast-Mafia Basin. Charts INT 70 INT 71 INT 72 INT 701. Deepsea stavanger, dynamically positioned oil rig is performing drilling operations in position 10-11.70S 040-31.30E. 2. Mariners to exercise caution and give wide berth of 2.5 NM. 3. Cancel this message on 25 Jan 2011.
004. Self Cancelling. Cancel NAVAREA VIII message 849 of 2010. India West Coast-Gulf of Khambhat. Charts 21 207 254 292 INT 71 INT 705. Narmada channel marking buoy number 1 re-established in position 20-35.60N 071-56.28E.
005. India East Coast-Bay of Bengal. Charts 32 356 INT 71 INT 706. Firing will be carried out from 11 to 22 Jan 2011 between 0230 UTC to 1130 UTC from position 13-50N 081-40E. 2. Danger zone is 5 NM around firing point. 3. Safe flying height 3100 metres. 4. Mariners to exercise caution. 5. Cancel this message on 23 Jan 2011.
006. Self Cancelling. Indian ocean western part and Arabian Sea. Charts INT 71 INT 72 INT 73 INT 703 INT 705. Piracy. M/V attacked/possible mothership activity in following positions: 19-35N 065-13E 031503Z JAN M/V Attacked 03-16N 056-41E 031139Z JAN M/V York 2. Mariners to exercise extreme caution and keep 100 miles clear of this position.
007. India West Coast – Cheriyakara Island. Charts 22 268 273 INT 706. Suhelipar light in position 10-02.3N 072-17.0E unlit. 2. Mariners to exercise caution.
008. Cancel NAVAREA VIII messages 739, 793, 841 and 852 of 2010. India East Coast – Bay of Bengal. Charts 31 32 354 355 INT 706. Present positions of oil rigs / drill ships are as follows: DISCOVERER SEVEN SEAS 19-36.33N 087-22.82E DHIRUBHAI DEEPWATER KG-1 15-11.18N 082-04.80E DEEP SEA MATDRILL 09-23.51N 078-59.45E ENERGY DRILLER 16-15.25N 082-10.76E HERCULES 258 16-38.56N 082-24.30E HERCULES 260 16-21.61N 082-02.16E SAGAR BHUSHAN 16-31.45N 082-22.69E SAGAR VIJAY 16-35.10N 082-27.66E

008. Continued....		
DISCOVERER INDIA	16-23.12N	083-34.16E
DEEP DRILLER-1	16-40.30N	082-28.20E
PLATINUM EXPLORER	17-55.56N	084-38.09E
2.	Wide berth requested.	
009. Cancel NAVAREA VIII message 003 of 2011. Tanzania East Coast-Mafia Basin.	Charts INT 70 INT 71 INT 72 INT 701. Deepsea Stavanger, dynamically positioned oil rig is performing drilling operations in position 10-11.70S 040-31.30E.	
2.	Mariners to exercise caution and give wide berth of 05 NM.	
3.	Cancel this message on 25 Jan 2011.	
010. Cancel NAVAREA VIII messages 740, 794, 821 and 825 of 2010. India West Coast – Arabian Sea.	Charts 21 22 211 291 292 293 INT 705 INT 706. Present positions of oil rigs / drill ships are as follows:	
ABAN ICE	18-45.06N	071-16.38E
ABAN III	19-25.35N	071-19.55E
ABAN IV	19-38.41N	071-00.01E
ABAN V	19-16.16N	071-23.43E
BADRINATH	19-11.46N	070-39.56E
CE THROTON	19-01.03N	071-14.43E
DEEP SEA FORTUNE	19-25.65N	071-16.23E
DEEP SEA FOSSIL	22-38.63N	068-23.10E
DISCOVERY 1	19-11.98N	072-11.00E
FG MCCLINTOCK	18-36.20N	072-13.98E
GREATDRILL CHETNA	20-32.30N	072-08.88E
JT ANGEL	18-47.20N	072-19.51E
KEDARNATH	20-48.20N	072-38.68E
NOBLE CHARLIE YESTER	18-38.78N	072-14.93E
NOBLE ED HOLT	18-43.05N	072-19.13E
NOBLE GEORGE MCLEOD	19-37.80N	071-17.86E
NOBLE KENNETH DELANEY	19-24.10N	071-23.06E
RON TAPPEMEYER	18-29.85N	072-15.00E
SAGAR GAURAV	19-26.15N	071-18.63E
SAGAR JYOTI	22-37.26N	068-27.15E
SAGAR KIRAN	19-25.00N	072-13.83E
SAGAR LAXMI	18-36.15N	071-01.63E
SAGAR PRAGATI	19-37.35N	071-21.66E
SAGAR SAMRAT	19-32.13N	071-18.81E
SAGAR SHAKTI	19-35.36N	071-16.76E
SAGAR UDAY	19-33.13N	071-16.35E
TRIDENT – 12	18-32.70N	072-13.98E
TRIDENT – 2	18-39.50N	072-12.85E
VIRTUE 1	20-20.16N	072-01.35E
2.	Wide berth requested.	
011. Self Cancelling. Indian Ocean-Western Part.	Charts INT 71 INT 72 INT 703. Piracy. Mauritian registered vessel, DN 127, type barge loaded with dredging equipment (was being towed from Dubai to Seychelles by M/V Tiba Folk) attacked in position 02-53N 059-24E on 02 Jan 2011 at 0930 UTC.	
2.	As a consequence M/V Tiba Folk has cut the towing line, leaving the DN 127 behind unmanned.	
3.	Mariners to exercise extreme caution.	
012. Mauritius South West Coast-LA Reunion Island.	Charts INT 70 INT 71 INT 72 INT 702. Oceanographic campaign will be carried out by Marion Dufresne around Re Union island with towed cable till 12 Jan 2011 in area bounded by:	
(a)	20-00S 053-00E	(b) 20-00S 056-30E
(c)	22-30S 056-30E	(d) 22-30S 053-00E
2.	Mariners to exercise caution and keep clear in the vicinity of vessel by 300 metres.	
3.	Cancel this message on 12 Jan 2011 at 2359 UTC.	
013. India West Coast-Off Mumbai.	Charts 21 22 292 INT 71 INT 705 INT 706. CS Niwa will carry out cable repair operations within 0.5 miles radius of position 18-54.059N 072-27.735E from 05 to 25 Jan 2011.	
2.	Wide berth requested.	
3.	Cancel this message on 26 Jan 2011.	
014. Self Cancelling. Cancel NAVAREA VIII messages 697, 783, 805, 813 and 820 of 2010 issued by INM 01 of 2011.		

<p>015. Self Cancelling. Western Indian Ocean. Charts INT 71 INT 72 INT 703. Piracy. M/V York conducting mothership operations in 03-45N 053-30E on 04 Jan 2011 at 2341 UTC.</p> <p>2. Mariners to exercise extreme caution and keep 100 miles clear of this position.</p>																
<p>016. Self Cancelling. Cancel NAVAREA VIII message 007 of 2011. Suhelipar light operational.</p>																
<p>017. India West Coast-Gulf of Khambhat. Charts 21 203 208 254 2044 INT 705. Sultanpur buoy retrieved from position 21-15.70N 072-11.40E for maintenance.</p> <p>2. Mariners to exercise caution.</p>																
<p>018. Self Cancelling. Indian Ocean Western Part-Somali Basin. Charts INT 70 INT 71 INT 72 INT 701 INT 702 INT 703. Piracy. Pirate action group in 04-19S 047-02E on 06 Jan 2011 at 0940Z UTC.</p> <p>2. Mariners to exercise extreme caution and keep 100 miles clear of this position.</p>																
<p>019. India West Coast – Mormugao. Chart 22 257 INT 705 INT 706. Firing practice by naval aircraft between 0230 UTC to 1230 UTC from 14 to 21 Jan 2011. Danger area bounded by:</p> <table style="width: 100%; border: none;"> <tr> <td style="width: 50%;">(a) 15-13.00N 073-57.00E</td> <td style="width: 50%;">(b) 15-13.00N 073-52.00E</td> </tr> <tr> <td>(c) 15-11.00N 073-52.00E</td> <td>(d) 15-11.00N 073-57.00E</td> </tr> </table> <p>2. Safe flying height 3500 metres.</p> <p>3. Mariners to exercise caution.</p> <p>4. Cancel this message on 22 Jan 2011.</p>	(a) 15-13.00N 073-57.00E	(b) 15-13.00N 073-52.00E	(c) 15-11.00N 073-52.00E	(d) 15-11.00N 073-57.00E												
(a) 15-13.00N 073-57.00E	(b) 15-13.00N 073-52.00E															
(c) 15-11.00N 073-52.00E	(d) 15-11.00N 073-57.00E															
<p>020. Self Cancelling. NAVAREA VIII-warning inforce:</p> <p>2010 Series- 380 399 461 470 508 520 528 534 581 629 630 648 675 736 746 747 760 761 762 767 770 771 776 779 781 804 817 822 823 829 840 843 845 847 848</p> <p>2011 Series- 005 008 009 010 012 013 014 015 016 017 018 019</p>																
<p>021. India East Coast – South of Kakinada and Mamallapuram. Charts 31 32 354 355 357 INT 706. Hydrographic survey will be carried out by hydrographic vessel in area bounded by:</p> <p>10 to 14 Jan 2011</p> <table style="width: 100%; border: none;"> <tr> <td style="width: 25%;">(a) 16-41.30N</td> <td style="width: 25%;">082-18.00E</td> <td style="width: 25%;">(b) 16-41.30N</td> <td style="width: 25%;">082-26.30E</td> </tr> <tr> <td>(c) 16-46.09N</td> <td>082-26.30E</td> <td>(d) 16-46.09N</td> <td>082-18.00E</td> </tr> </table> <p>15 to 28 Jan 2011</p> <table style="width: 100%; border: none;"> <tr> <td style="width: 25%;">(e) 12-24.00N</td> <td style="width: 25%;">080-08.00E</td> <td style="width: 25%;">(f) 12-24.00N</td> <td style="width: 25%;">080-19.20E</td> </tr> <tr> <td>(g) 12-40.00N</td> <td>080-19.20E</td> <td>(h) 12-40.00N</td> <td>080-08.00E</td> </tr> </table> <p>2. All vessels operating in vicinity to give wide berth of at least 02 NM and exercise caution.</p> <p>3. Cancel this message on 29 Jan 2011.</p>	(a) 16-41.30N	082-18.00E	(b) 16-41.30N	082-26.30E	(c) 16-46.09N	082-26.30E	(d) 16-46.09N	082-18.00E	(e) 12-24.00N	080-08.00E	(f) 12-24.00N	080-19.20E	(g) 12-40.00N	080-19.20E	(h) 12-40.00N	080-08.00E
(a) 16-41.30N	082-18.00E	(b) 16-41.30N	082-26.30E													
(c) 16-46.09N	082-26.30E	(d) 16-46.09N	082-18.00E													
(e) 12-24.00N	080-08.00E	(f) 12-24.00N	080-19.20E													
(g) 12-40.00N	080-19.20E	(h) 12-40.00N	080-08.00E													
<p>022. India West Coast-Off Okha. Charts 21 291 INT 71 INT 705. MFV Vasundhara (Registration Number vrl-6323) collided with an unknown merchant vessel in position 22-35.01N 068-21.01E on 04 Jan 2011 at 2130 UTC.</p> <p>2. Fishing vessel sunk after collision and 04 crew still reported missing.</p> <p>3. Mariners to keep a sharp lookout for survivors and render necessary assistance.</p>																
<p>023. Self Cancelling. Indian Ocean -Somalia East Coast. Charts INT 71 INT 72 INT 701 INT 703. Piracy. M/V York conducting mothership operations in 04-35N 048-04E on 09 Jan 2011 at 0540 UTC.</p> <p>2. Mariners to exercise extreme caution and keep 100 miles clear of this position.</p>																
<p>024. India East Coast-Bay of Bengal. Charts 31 32 INT 71 INT 706. Survey vessel Geowave Champion will carry out 3D seismic survey till 17 Jan 2011 in area bounded by:</p> <table style="width: 100%; border: none;"> <tr> <td style="width: 25%;">(a) 15-00.00N</td> <td style="width: 25%;">083-59.50E</td> <td style="width: 25%;">(b) 15-00.00N</td> <td style="width: 25%;">084-30.50E</td> </tr> <tr> <td>(c) 14-07.00N</td> <td>084-30.50E</td> <td>(d) 14-07.00N</td> <td>083.59.50E</td> </tr> </table> <p>2. The vessel will be towing ten marine seismic cable of 8100 metres length which will be submerged 08 metre below the water surface and also on the surface at times. Yellow tail buoy with a flashing light attached at the end of cable.</p> <p>3. All vessels operating in the area to exercise caution and give wide berth of 06 NM around the vessel.</p> <p>4. Cancel this message on 18 Jan 2011.</p>	(a) 15-00.00N	083-59.50E	(b) 15-00.00N	084-30.50E	(c) 14-07.00N	084-30.50E	(d) 14-07.00N	083.59.50E								
(a) 15-00.00N	083-59.50E	(b) 15-00.00N	084-30.50E													
(c) 14-07.00N	084-30.50E	(d) 14-07.00N	083.59.50E													
<p>025. India East Coast- Bay of Bengal. Charts 31 INT 71 INT 706. Survey vessel Bos Arctic will carry out 3 D seismic survey till 30 Jan 2011 in area bounded by:</p> <table style="width: 100%; border: none;"> <tr> <td style="width: 25%;">(a) 17-39.00N</td> <td style="width: 25%;">085-28.00E</td> <td style="width: 25%;">(b) 17-39.00N</td> <td style="width: 25%;">085-56.00E</td> </tr> <tr> <td>(c) 16-59.00N</td> <td>085-56.00E</td> <td>(d) 16-59.00N</td> <td>085-28.00E</td> </tr> </table> <p>2. The vessel will be towing 06 streamer cables of length 8100 metres. Each end is marked with yellow coloured tail buoy with flashing white light.</p> <p>3. All vessels operating in the area to exercise caution and give wide berth of 04 NM either side, 03 NM ahead and 07 NM astern of the vessel.</p> <p>4. Cancel this message on 31 Jan 2011.</p>	(a) 17-39.00N	085-28.00E	(b) 17-39.00N	085-56.00E	(c) 16-59.00N	085-56.00E	(d) 16-59.00N	085-28.00E								
(a) 17-39.00N	085-28.00E	(b) 17-39.00N	085-56.00E													
(c) 16-59.00N	085-56.00E	(d) 16-59.00N	085-28.00E													

<p>026. India West Coast - Kochi. Charts 22 32 220 259 260 2004 2029 2045 INT 706. Firing by Naval coast battery on following dates:</p> <table> <thead> <tr> <th>Date</th> <th>Time (UTC)</th> </tr> </thead> <tbody> <tr> <td>18, 25 Jan 2011</td> <td>0900 to 1200</td> </tr> <tr> <td>21, 28 Jan 2011</td> <td>0900 to 1200 and 1230 to 1430</td> </tr> </tbody> </table> <p>2. Danger area bounded by:</p> <table> <tbody> <tr> <td>(a) 09-57.50N</td> <td>075-59.50E</td> <td>(b) 09-57.70N</td> <td>076-14.20E</td> </tr> <tr> <td>(c) 09-44.00N</td> <td>076-17.50E</td> <td>(d) 09-42.50N</td> <td>076-09.50E</td> </tr> </tbody> </table> <p>3. Safe flying height 10000 metres. 4. Cancel this message on 29 Jan 2011.</p>	Date	Time (UTC)	18, 25 Jan 2011	0900 to 1200	21, 28 Jan 2011	0900 to 1200 and 1230 to 1430	(a) 09-57.50N	075-59.50E	(b) 09-57.70N	076-14.20E	(c) 09-44.00N	076-17.50E	(d) 09-42.50N	076-09.50E
Date	Time (UTC)													
18, 25 Jan 2011	0900 to 1200													
21, 28 Jan 2011	0900 to 1200 and 1230 to 1430													
(a) 09-57.50N	075-59.50E	(b) 09-57.70N	076-14.20E											
(c) 09-44.00N	076-17.50E	(d) 09-42.50N	076-09.50E											
<p>027. Self Cancelling. Cancel NAVAREA VIII message 760 of 2010. M/V Ribbon (IMO Number 9163295) refloated and sailed from Karaikal Port.</p>														
<p>028. Self Cancelling. Southern Arabian Sea. Charts INT 71 INT 72 INT 73 INT 703 INT 705. Piracy action group / M/V attacked in following positions:</p> <table> <tbody> <tr> <td>07-13N 055-24E 111304Z JAN</td> <td>Piracy Action Group</td> </tr> <tr> <td>14-03N 067-29E 111342Z JAN</td> <td>M/V attacked</td> </tr> </tbody> </table> <p>2. Mariners to exercise extreme caution and keep 100 miles clear of this position.</p>	07-13N 055-24E 111304Z JAN	Piracy Action Group	14-03N 067-29E 111342Z JAN	M/V attacked										
07-13N 055-24E 111304Z JAN	Piracy Action Group													
14-03N 067-29E 111342Z JAN	M/V attacked													
<p>029. India East Coast- Bay of Bengal. Charts 32 INT 71 INT 706. Survey vessel Viking Vision will carry out 3 D seismic survey from 16 to 30 Jan 2011 in area bounded by:</p> <table> <tbody> <tr> <td>(a) 12-15.38N</td> <td>083-27.52E</td> <td>(b) 12-34.46N</td> <td>083-28.03E</td> </tr> <tr> <td>(c) 12-34.54N</td> <td>083-12.04E</td> <td>(d) 12-15.46N</td> <td>083-11.54E</td> </tr> </tbody> </table> <p>2. The vessel will be towing 10 streamer cables of length 8100 metres. Each end of the cable is marked with yellow tail buoy with flashing light. 3. All vessels operating in the area to exercise caution and give wide berth of 07 NM around the vessel. 4. Cancel this message on 31 Jan 2011.</p>	(a) 12-15.38N	083-27.52E	(b) 12-34.46N	083-28.03E	(c) 12-34.54N	083-12.04E	(d) 12-15.46N	083-11.54E						
(a) 12-15.38N	083-27.52E	(b) 12-34.46N	083-28.03E											
(c) 12-34.54N	083-12.04E	(d) 12-15.46N	083-11.54E											
<p>030. India East Coast- Bay of Bengal. Charts 31 INT 71 INT 706. Survey vessel Viking II will carry out 3 D seismic survey from 13 to 31 Jan 2011 in area bounded by:</p> <table> <tbody> <tr> <td>(a) 15-25N</td> <td>085-15E</td> <td>(b) 15-55N</td> <td>085-15E</td> </tr> <tr> <td>(c) 15-55N</td> <td>085-04E</td> <td>(d) 15-25N</td> <td>085-04E</td> </tr> </tbody> </table> <p>2. The vessel will be towing 10 marine seismic cables of length 8100 metres. Each end of the cable is marked with yellow coloured tail buoy with flashing white light. 3. All vessels operating in area to exercise caution and give wide berth at least 08 NM around the vessel. 4. Cancel this message on 01 Feb 2011.</p>	(a) 15-25N	085-15E	(b) 15-55N	085-15E	(c) 15-55N	085-04E	(d) 15-25N	085-04E						
(a) 15-25N	085-15E	(b) 15-55N	085-15E											
(c) 15-55N	085-04E	(d) 15-25N	085-04E											
<p>031. India East Coast-Bay of Bengal. Charts 31 32 INT 71 INT 706. Firing will be carried out by Naval ships from 16 to 18 Jan 2011 between 0330 UTC 0830 UTC in area bounded by:</p> <table> <tbody> <tr> <td>(a) 16-09.00N</td> <td>083-59.00E</td> <td>(b) 15-26.50N</td> <td>084-44.00E</td> </tr> <tr> <td>(c) 14-38.00N</td> <td>084-07.50E</td> <td>(d) 15-20.00N</td> <td>083-24.00E</td> </tr> </tbody> </table> <p>2. Safe flying height 13000 metres. 3. Mariners to exercise caution. 4. Cancel this message on 19 Jan 2011.</p>	(a) 16-09.00N	083-59.00E	(b) 15-26.50N	084-44.00E	(c) 14-38.00N	084-07.50E	(d) 15-20.00N	083-24.00E						
(a) 16-09.00N	083-59.00E	(b) 15-26.50N	084-44.00E											
(c) 14-38.00N	084-07.50E	(d) 15-20.00N	083-24.00E											
<p>032. Self Cancelling. Cancel NAVAREA VIII message 770 of 2010. Mungra reef lighthouse operational.</p>														
<p>033. India East Coast- Visakhapatnam. Charts 31 32 308 354 3002 INT 706. Seaward firing practice by Naval Coast Battery from 1500 UTC to 1700 UTC on 19 Jan 2011. Danger area bounded by:</p> <table> <tbody> <tr> <td>(a) 17-42N</td> <td>083-18E</td> <td>(b) 17-47N</td> <td>083-32E</td> </tr> <tr> <td>(c) 17-34N</td> <td>083-30E</td> <td>(d) 17-28N</td> <td>083-18E</td> </tr> </tbody> </table> <p>2. Safe flying height 13000 metres. 3. Cancel this message on 20 Jan 2011.</p>	(a) 17-42N	083-18E	(b) 17-47N	083-32E	(c) 17-34N	083-30E	(d) 17-28N	083-18E						
(a) 17-42N	083-18E	(b) 17-47N	083-32E											
(c) 17-34N	083-30E	(d) 17-28N	083-18E											
<p>034. Self Cancelling. NAVAREA VIII-Warning inforce: 2010 Series-380 399 461 470 508 520 528 534 581 629 630 648 675 736 746 747 761 762 767 771 776 779 781 804 817 822 823 845 848 2011 Series-005 008 009 010 013 017 019 021 022 024 025 026 028 029 030 031 032 033</p>														

6.1

SECTION – VI
CORRECTIONS TO SAILING DIRECTIONS (PILOTS)

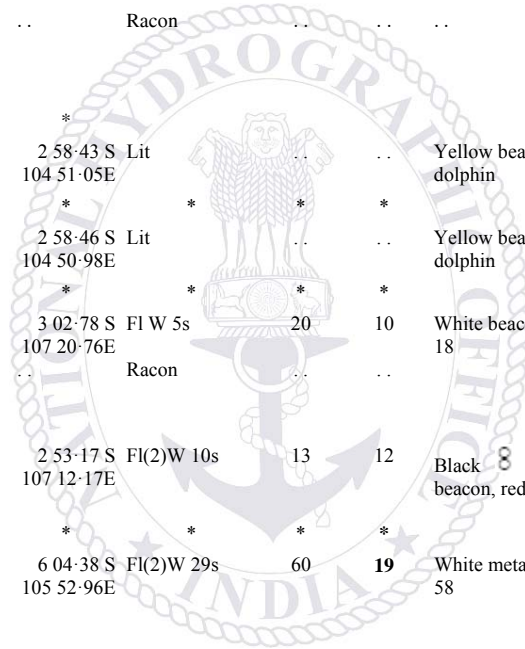
-Nil-

SECTION – VII
CORRECTIONS TO LIST OF LIGHTS

No	Name & Location	Position (Lat-Long)	Characteristics	Ht. mts	Range miles	Structure & Height (mts)	Remarks
D7323-2	Bayt al Barakat. East Breakwater	23 42-97 N 58 07-06 E	Fl R 5s	7	5	Red metal post 3	
*	*	*	*	*	*	*	*
D7323-22	Bayt al Barakat. West Breakwater	23 43-03 N 58 07-12 E	Fl G 5s	9	5	Green metal post 3	
*	*	*	*	*	*	*	*
D7355-6	- Mina Rashid. Main Breakwater	25 16-46 N 55 16-04 E	Q W	5	5	Red ◻ on yellow △ daymark 5	
*	*	*					
D7355-61	Remove from list						
D7355-77	- Dubayy Dry Dock. W Breakwater. Head. 22G	25 16-19 N 55 15-02 E	Fl G 5s	...	3	Green beacon	
*	*	*	*	*	*	*	*
D7355-771	- Dubayy Dry Dock. W Breakwater. Head. 22G	25 15-87 N 55 14-99 E	F Y				
*	*	*	*	*	*	*	*
D7355-772	- Dubayy Dry Dock. W breakwater. 24	25 15-80 N 55 14-98 E	F Y				
*	*	*	*	*	*	*	*
D7355-773	- Dubayy Dry Dock. W breakwater. 25	25 15-72 N 55 14-98 E	F Y				
*	*	*	*	*	*	*	*
D7355-774	- Dubayy Dry Dock. W breakwater. 26	25 15-56 N 55 14-96 E	F Y				
*	*	*	*	*	*	*	*
D7355-775	- Dubayy Dry Dock. W breakwater. 27	25 15-38 N 55 14-98 E	F Y				
*	*	*	*	*	*	*	*
D7355-776	- Dubayy Dry Dock. W breakwater. 28	25 15-10 N 55 15-22 E	F Y				
*	*	*	*	*	*	*	*
D7355-777	- Dubayy Dry Dock. W breakwater. 29	25 14-99 N 55 15-40 E	F Y				
*	*	*	*	*	*	*	*
D7355-778	- Dubayy Dry Dock. W breakwater. 30	25 14-89 N 55 15-58 E	F Y				
*	*	*	*	*	*	*	*
D7355-9	Remove from list						
D7355-94	Remove from list						
D7356-3	Remove from list						
D7356-31	Remove from list						
D7357-35	Remove from list						
F0367-8	- Mungra Reef	22 45-59 N 70 11-01 E	Fl(2)W 15s	7	10	White round concrete tower, red bands 10	
*	*	*					
F0702-1	- Ldg Lts 107°15'. Rear. 360m from front	9 57-90 N 76 16-90 E	Iso W 4s	15	11	White metal framework tower, red bands	TE 2010
*	*	*					*

7.2

K0838	-Pulau Sigata. E Summit (ID)	0 07-54 S 98 12-28 E	Oc W 3s	116	26	White metal framework tower 34	<i>ec 1.</i> Vis 000°-359-99° (359-99°). Obscured beyond Pulau Simuk 094°-102°(8°). Partially obscured beyond islets 183°-222°(39°). Obscured beyond Tg Hatik 344°-348°(4°)
		*	*		*	*	*
K0874	- Pulau Nyamuk (ID)	1 16-01 S 100 17-96E	Fl(2)W 10s	32	7	White metal framework tower 31	<i>fl 0-5, ec 1-5, fl 0-5, ec 7-5.</i> Vis 162°-033°(231°). Partially obscured at a short distance 033°-099°(66°). Partially obscured within 1M 099°-146°(47°). Partially obscured at a short distance 146°-162°(16°)
		*	*				*
K0914	Tanjung Cukubalimbing. Balimbing Pamancasa (ID)	5 55-51 S 104 33-50E	Fl(2)W 10s	63	20	White metal tower and dwelling 61	<i>fl 0-5, ec 2, fl 0-5, ec 7.</i> Vis 108°-138-3°(30-3°) Bearing 138-3° is the approximate NW shoreline limit. Vis 275-1°-105°(189-9°) Bearing 275° is the approximate E shoreline limit. Obscured beyond Pulau Batukecil 105°-108°(3°) ILRS Vol 2 Station 86390. TD 2009
--		..	Racon
K0945-5	- (ID)	2 58-43 S 104 51-05E	Lit	Yellow beacon on dolphin	*
		*	*	*	*	*	*
K0945-6	- (ID)	2 58-46 S 104 50-98E	Lit	Yellow beacon on dolphin	*
		*	*	*	*	*	*
K1022	- Pulau Kasenga (ID)	3 02-78 S 107 20-76E	Fl W 5s	20	10	White beacon, red bands 18	<i>fl 0-5.</i> Reported TE 2010
		..	Racon	ILRS Vol 2 Station 86360. Reported TD 2010
K1024-1	- Karang Pandan (ID)	2 53-17 S 107 12-17E	Fl(2)W 10s	13	12	Black 8 on black beacon, red bands	<i>fl 0-8, ec 1-2, fl 0-8, ec 7-2.</i> Ra refl. Isolated danger mark. Reported TE 2010
		*	*	*	*	*	*
K1050	Tg Cikoneng (ID)	6 04-38 S 105 52-96E	Fl(2)W 29s	60	19	White metal tower 58	<i>fl 0-4, ec 6-6, fl 0-4, ec 21-6.</i> Vis 010°-216°(206°). Obscured by land 216°-010°(154°) Bearing 010° is the approximate S shoreline limit
		*	*	*			*
K1052	- Pulau Tempurung (ID)	5 54-08 S 105 55-87E	Fl W 3s	77	13	White metal framework tower 22	<i>fl 1.</i> Vis 045-01°-045°(359-99°). Obscured beyond Pulau Sangiang Island 045°-066°(21°). For continuation westward <i>see</i> K0929 ALRS Vol 2 Station 86420
		..	Racon
K1058	- Pulau Payung Besar. S end (ID)	5 49-37 S 106 33-30E	LFl W 10s	30	10	White metal framework tower 30	Vis 264°-113°(209°). Partially obscured 113°-264°(151°)
		*	*	*			*



7.3

K1062	-Damar Besar. W Point (ID)	5 57-40 S Fl(4)W 20s 106 50-53E	52	19	White metal tower 52	<i>(fl 0-3, ec 3-2) x 3, fl 0-3, ec 9-2. Vis 296°-292°(356°). Obscured 292°-296°(4°) ILRS Vol 2 Station 86470</i>
---		Racon	
	*	*				*



SECTION – VIII
CORRECTION TO LIST OF RADIO SIGNALS

INP 31(1), 2005*(Last correction: Edition No. 07 dated 01 Apr 2009)***NIL****INP 31(2), 2007***(Last correction: Edition No. 24 dated 16 Dec 10)***NIL****INP 31(5), 1997***(Last correction: Edition No. 07 dated 01 Apr 09)***NIL****INP 31(6), 2005***(Last correction: Edition No. 18 dated 16 Sep 2010)*

*Page 85, India Section,
Insert After Magdalla Port (Gujarat Maritime Board)*

Vessels Traffic Management System

DESCRIPTION: The Master Control Station, located at Hazira, Surat operates 24 hours under the direct control of Gujarat Maritime Board. It operates with three operators, each manning VTS and ensures VTS services are provided to all the vessels sailing in the Gulf of Khambhat.

POSITION: 21° 08' 35N, 72° 44' 09E

AREA BOUNDARY: Covering entire Gulf of Khambhat, area north of latitude 20° 30'N and east of longitude 71°20'E.

SECTORS: VTS Khambhat North: Area north of latitude 21° 12.2'N up to landfall.

VTS Khambhat West: Area north of latitude 20° 30'N, east of longitude 71°20'E, west of longitude 72°20'E, south of latitude 21° 12.2'N.

VTS Khambhat East: Area north of latitude 20° 30'N, east of longitude 72°20'E, south of latitude 21° 12.2'N.

CALL: VTS Khambhat

VTS Khambhat North	VTS Khambhat West	VTS Khambhat East
VHF CH-69	VHF CH-10	VHF CH-09

VTS Center Location:

VTPMS Khambhat Master Control Station

Near Marine Police Station

Hazira, Surat

Gujarat – 394270

TEL: +91 261 6586788

+91 99 09 903748

EMAIL: vtskhambhat@aatash.com

WEB: www.aatash.com

PROCEDURE:

(i) Vessel intending to enter Gulf of Khambhat, India shall call VTS Khambhat (appropriate sector) on VHF channel one hour prior to entering the VTS area and provide pre-arrival notification (name, call sign, ETA at VTS limit and destination port).

(ii) Inward bound vessel upon entering the VTS area shall call VTS Khambhat on VHF channel.

(iii) A vessel once inside the VTS coverage area (other than a vessel at berth) shall keep a continuous listening watch on VHF channel appropriate to the respective sector of the VTS.

(iv) Vessels transiting in VTS area should call appropriate VTS sector on VHF channel upon

(a) Entering new sector

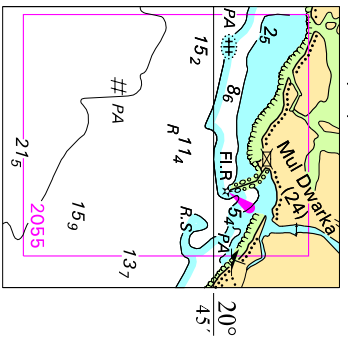
(b) Intending to anchor/weigh anchor

(c) Upon coming alongside/leaving berth

(v) Outward bound vessels shall inform appropriate VTS of next port of call and ETA next port.

Note: In addition to the regular reporting, all vessel transiting in the VTS area shall provide the VTS of any such information which concerns to Safety of Navigation and Pollution Prevention.

To accompany Notices to Mariners No 44/2011



Block correction for chart No. 206

SECTION – IX **REPORTING OF NAVIGATIONAL DANGERS**

Appeal to all Mariners

1. Mariners at sea whilst on passage, or whilst entering / leaving ports / harbours and other waterways, are requested to look out for new or suspected dangers to navigation, changes in aids to navigation, or corrections to published charts and Sailing Directions. Whenever any such changes / dangers are observed, mariners are requested to notify the same to the Chief Hydrographer to the Government of India at the following address: -

National Hydrographic Office
107-A, Rajpur Road,
Dehradun - 248001
(UTTARAKHAND), INDIA
e-mail: - inho-navy@nic.in, msis-inho-navy@nic.in
Fax No.: +91-135- 2748373
WEB: www.hydrobharat.nic.in

Instructions for filling up IH 102

2. Kindly follow the instructions below in order to help the Hydrographic Office (the recipient) to quickly issue NAVAREA warning / Notice to Mariners for the benefit of all other mariners at sea.

Position Reporting

3. When a position is defined by bearings (true or magnetic to be specified) more than two bearings should be used in order to provide a check. Distances observed by Radar should be corrected for index errors. Latitude and Longitude obtained from GPS / DGPS should specify the datum (WGS 84 or other). A copy / tracing from the largest scale chart may be used for forwarding details, with the corrections and additions being shown thereon in red.

Depth Reporting

4. When soundings are obtained using Echo Sounders, the echo-gram should be duly annotated with date, time, position and depth, etc., before enclosing it with the Form IH 102. It is important to state whether echo sounder is set to register depths below the surface or below the keel; in the latter case the vessel's draught should be given. Time and date should be given in order that corrections for the height of the tide may be applied where necessary. The make, name and type of echo sounder should also be given. Care should be taken to set the echo sounder to the largest scale / phase, so as to obtain maximum details of echo of the feature. Efforts should be made to identify and negate false echoes if any.

5. Reports, which cannot be confirmed or are lacking in certain details should not be withheld. Limitations or shortcomings should be duly notified in the form.

6. Reports on shoal soundings, uncharted dangers and navigational aids out of order should be reported through fastest available means at the mariner's discretion, and also be made by radio to the nearest coast radio station. The draught of modern tankers is such that any uncharted depth under 50 metres should be of sufficient importance to justify a radio message.

7. Port information should be forwarded on form IH 102a together with IH 102. Form 102a contains the information required for Sailing Direction and should be used as an *aide memoir*. Where there is insufficient space on the form, additional sheet should be used.

Please Note: - The receipt of all Hydrographic Notes will be duly acknowledged by the Hydrographic Office. Normally, the sender's ship or name is quoted as the source when the Notices to Mariners reporting the change is issued, unless the information is received through a foreign Notices to Mariners. Further communication from the Hydrographic Office to the sender of the hydrographic note will only be necessary to verify unusual features or abnormal values reported.

I.H. 102**HYDROGRAPHIC NOTE****(For Reporting Navigational Dangers/ Changes observed at Sea by Mariners)**

1. Name of ship or sender	
2. Address of sender	
(i) E-mail	
(ii) Fax No.	
(iii) Tel. No.	
3. General Locality	
4. Chart / Publication Affected:	
(i) Chart published by INHO / UKHO / other (Specify).	
(ii) Chart No.	
(iii) Edition Date.	
(iv) Latest Edition of Indian N to M held	
5. Details of Changes / Dangers Observed.	
Object of Change.	
(i) Date/Time of observation	
(ii) Charted Observed	
(iii) Position/Area	
(a) Bathymetry:	
(i) Depth	
(ii) Depth Contour	
(iii) Channel Depth	
(b) Navigational Dangers:	
(i) New Shoals	
(ii) New Rocks	
(iii) New Reefs	
(iv) New Wrecks	
(v) New Nav-aid (Specify)	
(c) Casualties to existing Nav-Aids:	
(i) Buoys	
(ii) Lights	
(iii) Fog signals	
(iv) Racons	
(v) Transit Marks	
(vi) Leading Lines	
(vii) Clearance bearings	
(d) Designated Areas:	
(i) Exercise Areas	
(ii) Prohibited Areas	
(iii) Pilot Station	
(iv) Anchorage	
(v) Foul Ground	

(e) Port Information:	
(i) Berthing	
(ii) Cranage	
(iii) Tugs	
(iv) Dry Docks	
(v) Repair Facilities	
(vi) Pilotage	
(vii) Fuel	
(viii) Water	
(ix) Any other (Specify)	
(f) Environmental Data	
(i) Met information	
(ii) Tides and Tidal Stream	
(iii) Pollutants	
(iv) Effluents	
(v) Marine Life / Habitats	
(g) Other changes, if any, with Details:	
6. Information on the Positions of Danger / Changes Reported above:	
(a) Positioning System used	
(b) Datum [WGS/Everest/ Local (Specify)]	
(c) Accompanying plots / photographs if any	
7. Information on the Soundings / Depths Reported above:	
(a) Echo Sounder (Type) used	
(b) Draught of Vessel set on Echo Sounder	
(c) Observed water depth vis-à-vis charted depth	
(d) Echo-gram accompanying this report: Yes / No	
(e) Whether voltage drop existed in equipment at observation time	
(f) Data and Time of depth observation	
8. Limitations if any in Reporting the changes above	

Filled By
(Name & Designation)

Checked by
(Name & Designation)

Place
Date

I.H. 102a**HYDROGRAPHIC NOTE FOR PORT INFORMATION****(For Reporting Changes to Port Information)**

1 Name and Address of the Port.	
(a) Name	
(b) Address	
(c) Phone No's	
(d) Web Site	
(e) E Mail	
2 General Remarks	
(a) Principal activities and trade	
(b) Number of ships and tonnage handled per year	
(c) Maximum size of draught of vessel handled	
(d) Soft copy of port handbook	
3 Anchorages	
(a) Type/Purpose	
(b) Minimum depth	
(c) Shelter afforded	
(d) Holding Ground	
(e) Recommended Pilotage to the anchorages	
(f) Request Pilots appreciation to the approach of anchorage area	
4 Pilotage	
(a) Authority for request	
(b) Embarkation Position	
(c) Regulations	
(d) Documents to be provided	
(e) Request Pilots appreciation to the approach of inner harbour and berths.	
(f) Information on Vessel Traffic Management System (VTMS).	
(g) Navigational aid	
(i) List of beacons	
(ii) Buoys	
(iii) Lighthouses	
(iv) Any other information	
5 Directions	
(a) Entry and berthing information	
(b) Tides (Range of the tides)	
(c) Tidal stream information in the area	
(d) Type of season (max/min temperature, rain fall, wind speed and direction)	
6 Pollution Control	
Local regulation in force (if any)	

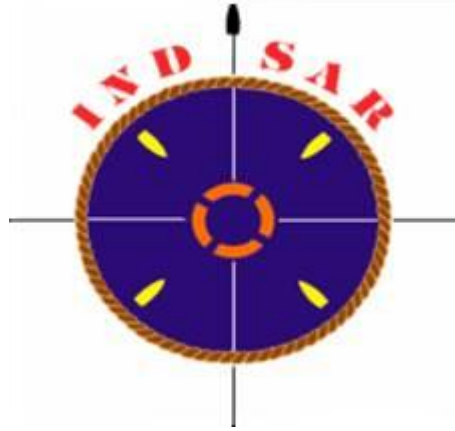
7 Tugs	
(a) Number available/Type	
(b) Maximum HP/Bollard Pull	
(c) Requesting authority	
(d) Availability times	
(e) Communication with tugs	
(f) Hiring charges	
8 Berthing and wharves	
(a) Type & number of berths available	
(b) Length	
(c) Depth alongside	
(d) Facilities available	
(e) Procedure for requesting berth and hiring charges.	
9 Cargo Handling	
(a) Containers	
(b) Lighters	
(c) Roll on / Roll off etc.	
10 Cranes	
(a) Brief details max lifting capacity, height of boom at warf level and outreach	
(b) Container handling facilities.	
11 Bridges	
Vertical clearance	
12 Repairs	
(a) Hull machinery and underwater	
(b) Ship and boat yards	
(c) Docking or slipway facilities (size or dimensions of vessels handled)	
(d) Hards and ramps	
(e) Divers/Diving Assistance	
13 Rescue and distress	
(a) Salvage, lifeboats, life guards etc	
14 Supplies	
(a) Fuel (type and quantities available)	
(b) Fresh water and rate of supply	
(c) Provisions	
(d) Chart agents	
15 Services	
(a) Radio/telegram/fax /telephone	
(b) Internet	
(c) Medical	
(d) Quarantine	
(e) counsel	
(f) Ship chandlery and stevedores	
(g) Compass adjustment	
(h) Tank cleaning	
(j) Hull painting	
(k) Police	

(l) Ambulance	
(m) Fire fighting (fixed and mobile facilities)	
(n) Navigational warning and weather bulletin	
(p) garbage disposal	
(q) Waste oil disposal	
(r) Helicopter landing facilities	
16 Communications	
(a) Road, rail and air services available	
(b) Nearest airport or airfield	
(c) Port radio and information service (Frequencies and operating hours)	
17 Port Authority	
Designation, address and phone number	
18 Security	
(a) Security of ports/ International Ship and Port Facility (ISPS) competence	
(b) Container Security Initiative (CSI)	
(c) Custom and Immigration regulation in ports	
19 Small craft facilities	
(a) Information and facilities for small craft yachts visiting the port	
(b) Yacht clubs, berths etc	
20 Shore leave	
21 Clubs recreation	
(a) information kiosk (location)	
(b) Foreign exchange firms/banks (within/near port area)	
(c) Places of interest near port	
(d) Hotels/ restaurants (Type of food served e.g Chinese, continental etc)	
22 Views (duly annotated), photographs of the approaches, leading marks, the entrance to the harbour etc.	
23 Any other information considered to be useful for the mariners	

Filled By
(Name & Designation)

Checked by
(Name & Designation)

Place
Date



FOR 24 X 7 SAR ASSISTANCE IN INDIAN SRR

Email: indsar@vsnl.net

NATION WIDE SAR TELE: 1554 (LAND LINE)

INMARSAT C (IOR) 441907210 CODE: 43 (TOLL FREE)

AFTN: VABBYXYC