



INDIAN NOTICES TO MARINERS



EDITION NO. 01 DATED 01 JAN 2011

(CONTAINS NOTICES 031 TO 041)

NATIONAL HYDROGRAPHIC OFFICE WISHES ALL MARINERS A HAPPY NEW YEAR 2011

REACH US 24 x 7



incho-navy@nic.in
msis-incho-navy@nic.in



+91-135-2748373



National Hydrographic Office
107-A, Rajpur Road
Dehradun – 248001
INDIA



Joint Director of Hydrography
Maritime Safety Information Services
+91- 135 - 2747360-65



www.hydrobharat.nic.in

CONTENTS

<u>Section No.</u>	<u>Title</u>
I	List of Charts Affected
II	Permanent Notices
III	Temporary and Preliminary Notices
IV	Marine Information
V	Radio Navigational Warnings in force
VI	Corrections to Sailing Directions
VII	Corrections to List of Lights
VIII	Corrections to List of Radio Signals
IX	Reporting of Navigational Dangers

(PUBLISHED ON NHO WEBSITE ON 1ST & 16TH OF EVERY MONTH)

FEEDBACK: msis-incho-navy@nic.in



INSIST ON INDIAN CHARTS AND
PUBLICATIONS
Original, Authentic and Up-to-Date



© Govt. of India Copyright

No permission is required to make copies of these Notices. However, such copies are not to be commercially sold.

II

MARINER'S OBLIGATION AND A CHART MAKER'S PLEA

Observing changes at sea proactively and reporting them promptly to the concerned charting agency, is an obligation that all mariners owe to the entire maritime community towards SOLAS. Mariners are requested to notify the Chief Hydrographer to the Government of India at the above mentioned address/fax number/ E mail address immediately on discovering new or suspected dangers to navigation, changes/defects pertaining to navigational aids, and short comings in Indian charts/publications. The Hydrographic Note [Form IH – 102] is a convenient form to notify such changes. Specimen form is attached at Section IX with this notice. Also visit our website for downloading and filling up instructions for Hydrographic Note.

**Chief Hydrographer
to the Government of India**



III

EXPLANATORY NOTES

Corrections to Charts and Publications. Section I comprises List of Charts affected by the notices contained in this edition. Whereas sections II and III contain information for correcting the charts and publications. Mariners should insist on corrected charts from their chart distributors/agents.

- (a) Geographical positions given are in the horizontal datum of the current edition of the chart, unless otherwise stated.
- (b) Bearings are true, reckoned clockwise from 000° to 359°. Bearings to lights are from seaward.
- (c) Symbols referred to, are those shown on the chart INT 1 (5020).
- (d) Alterations to depth contours, deletion of depths to make way for new detail, etc; are not normally mentioned, unless they have some navigational significance.
- (e) Blocks and notes, if any, accompanying the Notices in Sections II and III are placed after Section IX.

Temporary and Preliminary Notices. These are indicated by (T) and (P) respectively after the Notice number and are placed in Section III. SI Nos. of those in force are published quarterly on 01 Jan, 01 Apr, 01 Jul and 01 Oct, and their text is published in Annual Edition of Indian Notices to Mariners. They should be inserted in pencil, by the user, on receipt.

Source of Information. A star preceding the number of a Notice indicates that the notice is promulgated by INHO based on original information received.

Sailing Directions. Corrections for the Sailing Directions (Pilots) are given in Section VI.

Lights. Corrections to Indian list of Lights are given in Section VII, where affected Light List number is quoted.

- (a) These corrections should be incorporated as per instructions given on page XI of the list of Lights.
- (b) Such correction notices to list of lights may be published in either an earlier or a later Edition of N to M than the Edition containing the Notice to the chart correction.
- (c) The range of a light given is its nominal range. Its geographical range is given in parenthesis only if it is less than the nominal range.
- (d) A star indicates that the corresponding field is to be amended and all stars indicate that new light is to be inserted.

Radio Signals. The corrections in Section VIII should be cut and pasted in the appropriate volume of the List of Radio Signals.

Radio Navigational Warnings.

- (a) These are broadcast as serially numbered NAVAREA warnings by the concerned NAVAREA coordinator through GMDSS and Area Radio Broadcasts.
- (b) They contain important information affecting navigational safety, which cannot await the publication of the next edition of N to M.
- (c) It should be borne in mind that they may be based on reports which cannot always be verified before promulgation.
- (d) It is therefore necessary to be selective, and promulgate only the more important warnings to avoid over loading users; the less important information is included in the forthcoming edition of N to M or the Chart/publication concerned.

IV

Laws and Regulations. While in the interest of the safety of shipping, the Hydrographic Office makes every endeavor to include in its publications details of the laws and regulations of all countries pertaining to navigation, it must be clearly understood: -

- (a) That no liability whatsoever can be accepted for failure to publish details of any particular law or regulation and
- (b) That publication of details of a law or regulation is solely for the safety and convenience of shipping and implies no recognition of the International validity of the law or regulation.

Correction of Charts and Publications by the Users. Notices to Mariners contain important information concerning safety of navigation at sea, hence, they should be used to keep the specified charts and publications up-to-date.

Reliance on Charts and Associated Publications. While every effort is made by the Hydrographic Office to ensure the accuracy of the information on Charts and Publications before they are published, it should be appreciated that it may not always be complete and up-to-date. The mariner must be the final judge for the reliance he can place on the information available, bearing in mind his particular circumstances, local pilotage guidance and judicious use of available navigational aids.

Use of Global Positioning System (WGS 84) positions.

- (a) The positions of hydrographic objects shown on most of the Indian charts and publications are in Everest datum. However, the positions of vessels obtained from Global Positioning System (GPS) are on World Geodetic System 1984 datum. There will always exist a difference in the position values obtained by visual fixing (Everest Datum) and GPS position (WGS 84 datum).
- (b) Wherever these differences have been ascertained, their average values are published as a Cautionary Note on the chart concerned, as shifts in Latitude and Longitude. Whilst plotting GPS positions on charts, the shift values as given on the chart must be applied, before making any assessment of the navigational situation vis-à-vis the other charted information.
- (c) These datum shift values are not uniform, particularly in areas off Andaman and Nicobar and Lakshadweep Islands, as these places are not linked to mainland network (Everest datum). Mariners are advised to use alternate source of position information such as Visual or Radar, particularly when closing the shore or navigating in the vicinity of dangers.

Source Data on Charts. All Indian charts contain specific information on their source of hydrographic data. In areas where the source data is very old, incomplete and less reliable, the mariner must use such charts with prudence. Mariner should always use the largest scale charts available for the area. Apart from being the most detailed, the larger scale charts are usually corrected first. Hydrographic information may be sparse on small scale charts. On such charts, a charted shoal may be in error as regards position, least depth and extent. Uncharted dangers may also exist, particularly in areas away from well-established routes. Mariners must exercise due caution.

Further Guidance. The Mariner's Hand Book (NP 100) gives full explanation on the use of charts and the type of information contained on charts. In their own interest, all users of charts should refer to it.

NEWLY PUBLISHED INDIAN CHARTS, ENC'S AND PUBLICATION

1. The new Indian Electronic Navigation Charts that is available for mariners in the market is as follows:-

<i>ENC Cell Name</i>	<i>Chart No.</i>	<i>Title</i>	<i>Publication Date</i>
IN62021P	2021	MUNDRA PORT	31-12-2010*

2. The Indian Electronic Navigation Charts permanently withdrawn is as follows:-

<i>ENC Cell Name</i>	<i>Chart No.</i>	<i>Title</i>	<i>Publication Date</i>
IN52021M	2021	MUNDRA PORT	08-09-2008*

* Issue date

3. The forthcoming Indian Charts are as follows:-

<i>Chart No</i>	<i>Title</i>	<i>Scale</i>	<i>Remarks</i>
41 (INT 757)	ANDAMAN SEA	15,00,000	New Chart
301	APPROACHES TO HUGLI RIVER	1,50,000	New Edition
2020	MORMUGAO AND PANAJI	25,000	New Edition
2022 (INT 7345)	APPROACHES TO MORMUGAO	60,000	New Edition
2073	APPROACHES TO KUNDAPURA	37,500	New Edition
2103	DIGHI PORT	12,500	New Chart
2104	KOLLAM PORT	12,500	New Chart
3501	KANKESANTURAI HARBOUR	12,500	New Chart

Availability of ENC'S.

The complete folios of Official Indian ENC'S are distributed worldwide through JEPPESEN MARINE (formerly C-MAP), UKHO and Norwegian Hydrographic Service. UKHO distributes Indian ENC'S through the world wide network of their agents and distributors. Updates are also made available as per the existing policy of the distributor. Mariners and other ENC users may contact the under mentioned for further details:

The Chief Hydrographer to the Government of India National Hydrographic Office 107-A, Rajpur Road Dehradun- 248001 Uttarakhand, India Tele: +91-135- 2747365, Fax: +91-135-2748373 Email: inho-navy@nic.in msis-inho-navy@nic.in sales-inho-navy@nic.in Website: www.hydrobharat.nic.in	Director, JEPPESEN MARINE Jeppesen India Pvt. Ltd. 505, Raheja Arcade, Sector-11, CBD Belapur, Navi Mumbai 400614 India Ph: 91-22- 65103668 Fax: 91- 22- 67939504 Email: info@c-map.co.in Website: www.c-map.co.in
United Kingdom Hydrographic Office Admiralty Way, Taunton, Somerset TA1 2DN, UK Tel: +44 (0) 1823 337900 Fax: +44 (0) 1823 330561, 1823 284077 Telex: 46274 Email: helpdesk@ukho.gov.uk Web site: www.ukho.gov.uk	Director General Norwegian Hydrographic Service, Postbox 60, 4001 Stavanger Telephone - +47 - 51 85 87 00 Fax - + 47 - 51 85 87 08 E-mail:-gerry.larsson-fedde@statkart.no Website: - www.primar.org

VI

TEMPORARY AND PRELIMINARY NOTICES

In Force 01 Jan 2011

(Former In Force List dated 01 Oct 2010 is cancelled)

Cancelled Notices

<i>Area</i>	<i>Notice No.</i>
1	446/06, 600/06.
2	102/05, 248/09, 227/10, 368/09, 236/10, 293/10.
3	254/09, 340/09, 383/09, 129/10, 156/10, 170/10, 171/10, 209/10, 274/10, 275/10, 276/10, 285/10.
4	Nil

1. AFRICA EAST COAST, MADAGASCAR, RED SEA, ARABIA, PERSIAN GULF, PAKISTAN

<u>Notice</u>	<u>Charts Affected</u>	<u>Description</u>
506/04	20 – 8004.	IRAN – Khuran (Clarence Strait) – Jetty. Buoyage. Depths. Drying height. Pilot boarding place. Lights. Mooring buoys.
445/06	20 – 21 – 286 – 291 – 2088 – 2094 – 2095 – 2096 – 7703 (INT703) – 7705(INT 705) – 8009 – 8010.	ARABIAN SEA – RED SEA – Submarine cables.
577/06	20.	SAUDI ARABIA – EAST COAST – Buoyage. Restricted areas.
598/06	20.	SAUDI ARABIA – EAST COAST – Al Khubar to Al Kuwayt, KUWAIT – Submarine cable.
599/06	20.	BAHRAIN – Al Manama to SAUDI ARABIA, Al Khubar – Submarine cable.
249/08	20 – 288 – 289 – 8004.	UNITED ARAB EMIRATES – QATAR – Submarine cables.
354/08	20 – 289.	UNITED ARAB EMIRATES – Jazirat Das to Ras al Qila – Submarine pipeline.
201/09	2049 – 2050.	PAKISTAN – Karachi Harbour – Lower Harbour Eastwards – Works.
298/10	8004	UNITED ARAB EMIRATES – Dubai (Dubayy) – Palm Deira North–westwards – Buoy.

2. INDIA WEST COAST – INDIAN OCEAN

<u>Notice</u>	<u>Charts Affected</u>	<u>Description</u>
137/04	21 – 203 – 2068 – 7705 (INT705).	INDIA – WEST COAST – Gulf of Kachchh – Ballast Split.
171/08	2040.	INDIA – WEST COAST – Porbandar Anchorage – Depth.
439/08	2080 – 2018 (INT 7321) – 2059 (INT 7322).	INDIA – WEST COAST – Kandla – Sogal channel – Buoy. Jetty.
084/09	2053.	INDIA – WEST COAST – Sacrifice Rock to Beypore – Breakwater.
085/09	2047.	INDIA – LAKSHADWEEP – Plans in Lakshadweep – Kalpitti to Parali Island – Agatti – Jetty.

VII

2. INDIA WEST COAST – INDIAN OCEAN(Continued)

252/09	2022 (INT 7345).	INDIA – WEST COAST – Approaches to Mormugoa – Buoy.
331/09	203(INT 7319) – 2068.	INDIA – WEST COAST – Gulf of Kachchh – Deep water route – Buoy.
072/10	2016(INT7336) – 2015 (INT7337) – 2001.	INDIA – WEST COAST – Mumbai Harbour – Mooring Buoy.
073/10	2016(INT 7336) – 2015(INT 7337) – 2001 – 2076(INT 7338).	INDIA – WEST COAST – Mumbai Harbour – Dredging Operation. Dumping Ground.
103/10	2011.	INDIA – WEST COAST – Jaigarh Harbour – Dredging. Light. Breakwater. Works.
197/10	2020 – 2078 (INT 7346).	INDIA – WEST COAST – Approaches to Mormugao – Construction Work.
198/10	2036.	INDIA – WEST COAST – Murud Janjira Harbour – Dighi Port – Buoys.
218/10	2019 – 2101.	INDIA – WEST COAST – Approaches to Hazira – Buoys. Beacons.
235/10	2082.	INDIA – WEST COAST – Approaches to Dahej Harbour – Dahej Harbour – Jetty. Work.
255/10	21 – 22(INT 752) - 249 – 250 – 291 - 292(INT 7021) - 293(INT 7022).	INDIA – ARABIAN SEA – Argo Floats.
267/10	2021 – 2079.	INDIA – WEST COAST – Approaches to Mundra Port – Mundra Port – Construction Work. Dredging Work. Anchorage Area. Buoys. Pipe Line. SPM. Pilot Boarding Place.
280/10	203(INT7319) – 2080 – 2083 – 2079.	INDIA – WEST COAST – Approaches to Sikka – Wreck.
281/10	2031 – 2013.	INDIA – WEST COAST – Port of Okha – Buoys.
282/10	204.	INDIA – WEST COAST – Dwarka to Navibandar – Off Bhogat – SPM. Submarine Pipeline.
283/10	2022(INT7345) – 2020 – 2078(INT7346).	INDIA – WEST COAST – Port of Mormugao – Buoys.
284/10	2004(INT7359) – 2045(INT7360).	INDIA – WEST COAST – Port of Kochi – Kochi Harbour – Dredging.
038/11	21 – 22(INT 752) – 23 – 32(INT 754) – 214 – 215 – 221 – 253(INT 7328) – 257(INT 7343) – 259(INT 7356) – 260(INT 7362) – 261 – 262 – 263(INT 7383) – 292(INT 7021) – 293(INT 7022).	INDIA – WEST COAST – Arabian Sea – ADCP Moorings.
039/11	255 – 211 – 2016 – 2015.	INDIA – WEST COAST – Port of Mumbai – Wreck.
040/11	21 – 292(INT7021) – 7705 (INT705).	INDIA – WEST COAST – Arabian Sea – Data Buoys.

VIII

3. INDIA EAST COAST – ANDAMAN NICOBAR, SRI LANKA, MAYANMAR

<u>Notice</u>	<u>Charts Affected</u>	<u>Description</u>
540/05	7708 (INT 708).	INDIAN OCEAN – Cocos Islands – Light– beacon.
106/07	358 (INT 7394) – 317.	INDIA – SRILANKA – Palk Bay – Western Portion – Obstructions.
200/08	32 (INT754) – 33 – 357 (INT 7397) – 3007 – 3033.	INDIA – EAST COAST – Chemplast Karaikal Terminal – Construction Work. Dredging.
220/08	31 – 351 – 3017.	INDIA – EAST COAST – Approaches to Dhamra River – Construction Work.
185/09	225 – 2063.	SRI LANKA – WEST COAST – Colombo Harbour and Approaches – Depths.
199/09	3035.	INDIA – EAST COAST – Gangavaram Port – Data Buoy.
395/09	308 – 3002(INT 7410) – 3012(INT 7411).	INDIA – EAST COAST – Approaches to Visakhapatnam – Submarine Pipeline. Single Point Mooring. Buoy.
37/10	225 – 2063.	SRI LANKA – WEST COAST – Colombo Harbour and Approaches – Construction Work. Restricted area. Recommended routes.
38/10	3028.	INDIA – EAST COAST – Port of Ennore – Jetty. Construction Work. Dredging.
147/10	263 – 264 – 225 – 2063.	SRI LANKA – West Coast – Approaches to Colombo – Submarine pipeline.
189/10	31 – 32 (INT754) – 33 – 262 – 308 – 352 (INT7416) – 353 (INT7413) – 354 (INT7408) – 355 (INT7405) – 357 (INT7397) – 391.	INDIA – EAST COAST – Bay of Bengal – Underwater Moorings.
219/10	3009.	INDIA – EAST COAST – Approaches to Kakinada – Kakinada Anchorage – buoys. Turning Circle. Jetties.
237/10	406 – 4010.	ANDAMAN SEA – INDIA – Little Andaman Islands – Hut Bay – Light.
256/10	31 – 32(INT 754) – 33 - 354(INT 7408).	INDIA – BAY OF BENGAL – Argo Floats.
294/10	313.	INDIA – EAST COAST – Kattupalli Port – Works.
295/10	352(INT7416) – 3010(INT7418).	INDIA – EAST COAST – Paradip Port – Dredging.
296/10	31 – 32(INT754) – 33 – 391.	INDIA – EAST COAST – Bay of Bengal – Andaman Sea – Data Buoys.
297/10	41 – 472.	INDIA – Andaman Sea – Nicobar Islands – Data Buoy.
299/10	23 – 31 – 33 – 7702(INT702) – 7706(INT706) – 7707(INT707).	INDIAN OCEAN – Data buoys.
041/11	31 – 391 – 354(INT7408) – 308.	INDIA – EAST COAST – Bhimunipatnam north-westwards – Buoy.

IX

4. MALACCA STRAIT, SINGAPORE STRAIT AND SUMATERA

383/03	33 – 41.	INDONESIA – Sumatera – North and Northwest Coasts – Restricted area.
223/07	4026 – 4027.	MALAYSIA – Peninsular Malaysia, West Coast – Pinang Harbour – Coastline. Works. Lights. Beacons. Depths. Drying patch. Wrecks. Obstructions. Dredged areas. Marine farms.
377/07	7508(INT 508).	INDONESIA – Sumatera – Pulau Belitung West Coast – Tanjungpandan to Jawa North Coast – Pakis – Submarine cable.
341/09	41 – 9001.	INDONESIA – Sumatera – East Coast – Teluk Aru Eastwards – Submarine pipeline.
238/10	41 – 471.	INDONESIA – Sumatera – North West Coast – Pulau Bunta – Lights.



SECTION – I

The list of charts affected by the Notices 031 to 041 contained in this edition are as follows:-

CHART NUMBER	FOLIO NO.	NOTICE NO.
21	2	038(T), 040(T)
22(INT752)	3	038(T)
23	1	038(T)
31	5	036, 041(T)
32(INT754)	5	038(T)
206	2	032
211	3	039(T)
214	3	038(T)
215	3	038(T)
221	3	038(T)
253(INT7328)	2	038(T)
255(INT7334)	3	039(T)
257(INT7343)	3	038(T)
259(INT7356)	3	038(T)
260(INT7362)	3	038(T)
261	4	038(T)
262	4	038(T)
263(INT7383)	4	038(T)
288	1	037
289	1	037
292(INT7021)	2	038(T), 040(T)
293(INT7022)	3	038(T)
308	5	041(T)
352(INT7416)	5	033, 036
354(INT7408)	5	041(T)
391	5	041(T)
2015(INT7337)	3	039(T)
2016(INT7336)	3	039(T)
2021	2	031
3010(INT7418)	5	033
3017	5	034
3035	5	035
7705(INT705)	1	040(T)

SECTION – II
PERMANENT NOTICES

***031/(01/11) INDIA – WEST COAST – Mundra Port – Legends.**

Source: Mundra Port.

(HJ/1131/17)

Chart 2021 [previous update 277/10]

Insert	Legend, “Terminal-2”, orientation NW/SE centered on:	22° 44′.39N., 69° 43′.04E.
Substitute	Legend, “AMCT” for Legend, “T-2 Terminal”	22° 44′.77N., 69° 42′.48E.

***032/(01/11) INDIA – WEST COAST – Veraval – Coastline. Depths. Contours. Light. Conspicuous Object.**

Source: NHO Dehradun

(HJ/1130/09)

Chart 206 [previous update 203/10]

Insert	accompanying block showing amendments to Coastline, Depths, Contours, Light, Conspicuous Object centered on:	20° 50′.57N., 70° 20′.58E.
--------	--	----------------------------

***033/(01/11) INDIA – EAST COAST – Approaches to Paradip – Port Limit. Legend.**

Source: Paradip Port Trust

(HJ/1129/03)

Chart 352(INT 7416) [previous update 290/10]

Insert	Port limit, -----, joining:	(a) 20° 14′.65N., 86° 38′.15E. (Shore)
		(b) 20° 00′.15N., 86° 38′.15E.
		(c) 20° 07′.45N., 86° 48′.00E.
		(d) 20° 17′.50N., 86° 48′.00E.
		20° 17′.50N., 86° 43′.00E. (Shore)
	legend, “Limit of Port of Paradip”, along:	(a) – (b) above
		(b) – (c) above
		(c) – (d) above

Chart 3010 (INT 7418) [previous update 290/10]

Insert	Port limit, -----, joining:	(a) 20° 14′.65N., 86° 38′.15E. (Shore)
		(b) 20° 07′.00N., 86° 38′.15E. (S Border)
		and
		(c) 20° 07′.00N., 86° 47′.40E. (S Border)
		(d) 20° 07′.45N., 86° 48′.00E.
		(e) 20° 17′.50N., 86° 48′.00E.
		(f) 20° 17′.50N., 86° 43′.00E. (Shore)
	legend, “Limit of Port of Paradip”, along:	(a) – (b) above
		(d) – (e) above
		(e) – (f) above

Delete	Port limit, -----, joining with associated legend, “Limit of Port of Paradip” joining:	20° 14′.65N., 86° 38′.05E. (Shore)
		20° 07′.00N., 86° 38′.05E. (S Border)
		and
		20° 07′.00N., 86° 45′.04E. (S Border)
		20° 08′.47N., 86° 47′.90E.
		20° 17′.70N., 86° 47′.90E.
		20° 17′.70N., 86° 42′.42E.

* **034/(01/11) INDIA – EAST COAST – Approaches to Dhamra River – Fairway Buoy.**

Source: INS Nirupak

(HJ/1029/02)

Chart 3017 [previous update 045/10]

Insert		Mo(A)8s	20° 55'·41N., 87° 07'·25E.
Delete		Fl.4s	20° 55'·65N., 87° 07'·24E.

* **035/(01/11) INDIA – EAST COAST – Gangavaram Port – Lights.**

Indian List of Light F0969.21

Source: Gangavaram Port Limited

(HJ/1029/76)

Chart 3035 [previous update N. C. 15 Feb 2009]

Amend	light to, QFl.12M	17° 37'·46N., 83° 13'·47E.
	light to, QFl.12M	17° 37'·48N., 83° 13'·76E.

* **036/(01/11) INDIA – EAST COAST – Off Puri – Wreck.**

Source: NAVAREA VIII – 805/10

(HJ/1029/94)

Wreck of F/V Mahadeva-3

Chart 31 [previous update 164/10] [WGS 84 DATUM]

Insert		19° 47'·21N., 85° 53'·64E.
--------	---	----------------------------

Chart 352 [previous update 033/11]

Insert		19° 47'·21N., 85° 53'·64E.
--------	---	----------------------------

037/(01/11) SAUDI ARABIA - East Coast - Rennie Shoals North-eastwards - Light. Pipe.

Source: BA Notice – 6300/10

(HJ/1132/78)

Chart 288 [previous update 241/10] [WGS 84 DATUM]

Insert	★ FL.R.4s5M Pipe Rep(2010)	27° 16'·70N., 51° 03'·00E.
--------	----------------------------	----------------------------

Chart 289 [previous update 291/10] [WGS 84 DATUM]

Insert	★ FL.R.4s5M Pipe Rep(2010)	27° 16'·70N., 51° 03'·00E.
--------	----------------------------	----------------------------

SECTION – III
TEMPORARY AND PRELIMINARY NOTICES

***038(T)/(01/11) INDIA – WEST COAST – Arabian Sea – ADCP Moorings.**

Source: NIO Goa.

(HJ/1030/72)

1. Underwater Acoustic Doppler Current Profiler (ADCP) mooring deployed by National Institute of Oceanography, Goa in following positions:-

Sl.	Mooring	Positions		Depth(in metres)	Charts affected
a)	KKS1	07°21'.934N	77°28'.497E	107	22(INT 752) – 23 – 32(INT 754) – 260 (INT 7362) – 261 – 263 (INT 7383)
b)	OMS2	19°54'.731N	69°33'.289E	100	21 – 253(INT 7328) – 292 (INT 7021).
*c)	OKS3	09°00'.159N	75°57'.367E	150	22(INT 752) – 32(INT 754) – 256 – 260 – 221.
*d)	OGD6	15°09'.200N	72°42'.884E	332	22(INT 752) – 293 – 214.
*e)	OMD3	19°59'.881N	69°14'.000E	345	21 – 292 – 253.
*f)	OGS6	15°10'.942N	73°03'.557E	106	22(INT 752) – 293 – 252 – 214 – 215.
*g)	OKD3	09°02'.680N	75°26'.284E	365	22(INT 752) – 259 – 221.
*h)	SSMD2	08°48'.031N	79°10'.785E	82	32(INT 754) – 262.
*j)	KKD2	06°57'.731N	77°23'.916E	275	22(INT 752) – 23 – 32(INT 754) – 261 – 263(INT 7383)
*k)	KKS2	06°59'.839N	77°26'.837E	160	22(INT 752) – 23 – 32(INT 754) – 261 – 263.

* indicates new entries.

2. Mariners to exercise caution.
3. **Former INM 368(T)/09 is cancelled.**

***039(T)/(01/11) INDIA – WEST COAST – Port of Mumbai – Wreck.**

Source: Mumbai Port Trust

(HJ/1030/87)

1. MSC Chitra aground in position 18° 51'.95N., 72° 48'.98E.
2. Mariners to exercise caution.
3. **Former INM 263(T)/10 is cancelled.**

Charts Affected – 255 – 211 – 2016 – 2015.

***040(T)/(01/11) INDIA – WEST COAST – Arabian Sea – Data Buoys.**

Source: NIOT Chennai.

(HJ/1031/21)

1. Following yellow coloured data buoys characteristics FL.Y.4s4M, 3m dia and 3.5m height mast with radar reflector & mast carrying sensor laid in following positions:

Buoy No.	Position	Charts affected
*AD01	19° 00'.20N., 66° 59'.64E.	21 – 292
*AD02	14° 59'.94N., 68° 59'.98E.	7705(INT 705)
AD03	12° 00'.00N., 68° 58'.00E.	7705(INT 705)

* indicates new entries.

2. All vessels operating in vicinity are to maintain a clearance of 01 NM off the moored buoys.
3. **Former INM 293(T)/10 is cancelled.**

***041(T)/(01/11) INDIA – EAST COAST – Bhimunipatnam north-westwards – Buoy.**

Source: NIO Goa

(HJ/1029/86)

1. A orange colour wave rider buoy Fl(5).Y.20s, deployed in position 18°04'.00N., 083°46'.20E for a duration of one year w.e.f. 25 Nov 10.
2. All vessels are advised not to navigate in the vicinity and to keep clear of the buoy at least 500m.
3. Cancel this Notice on 26 Nov 2011.

Charts affected – 31 – 391 – 354(INT7408) – 308.



SECTION – IV **MARINE INFORMATION**

MUMBAI NAVTEX COAST STATION

MSI Promulgation by Mumbai NAVTEX Coast Station position 19° 05'.00 N, 072° 50'.00 E is closed for maintenance.

(Source - NAVAREA VIII Warning 305/08)

PIRACY REPORTING

1. Suspected Somali pirates seen attacking and hijacking vessels in Indian Ocean (west, central and east) off Seychelles/off Madagascar/off west Maldives. Pirates are using hijacked merchant vessels as mother vessels to sail far from Somali coast to attack and hijack passing vessels. In new modus operandi pirates are using the hijacked Srilankan/Thai/Chinese fishing trawlers including Indian dhow to carry skiffs for piracy attacks. The pirates are heavily armed with automatic weapons and RPG.
2. Mariners are advised to maintain strict anti piracy watches and report all piratical attacks (actual/attempted) and suspicious sighting to the MRCC Mumbai (focal point - India for piracy reporting)
3. Contact details of MRCC Mumbai are as follows:-
 - (a) Tele FAX 0091-22-24316558/2433727
 - (b) Telephone 0091-22-24316558/24332554/24388065
 - (c) E-mail indsar@vsnl.net, icgmrcc_mumbai@mtnl.net.in, mrcc-west@indiancoastguard.nic.in

Distribution of Indian Paper Charts and Nautical Publications

Indian Nautical Charts and Publications from National Hydrographic Office, India are now available globally. Details of overseas chart agents are as follows:-

<p>*JEPPESEN MARINE Jeppesen India Pvt. Ltd. 505, Raheja Arcade, Sector-11, CBD Belapur, Navi Mumbai 400 614 Ph: 91 22 65103668 Fax: 91 22 67939504 Email: info@c-map.co.in</p>	<p>*JEPPESEN MARINE Jeppesen Norway AS P.O. 212, N-4379, Egersund, Norway Ph: 0047 51 464700 Fax: 0047 51 464701 Email: info@c-map.no Site: www.c-map.no</p>	<p>C-Map US Commercial 133 Falmouth Road, Building 2, Postal Code: 02649, Mashpee, MA, America Ph: +1 (508) 477 8010 Fax: +1 (508) 539 4381 Email: info@c-map.com</p>
<p>C-Map (UK) Ltd. Systems House Delta Business Park Salterns Lane, Fareham, PO16 0QS, United Kingdom, Ph: +44 (0) 1329 517777 Fax: +44 (0) 1329 517778 Email: info@c-map.co.uk</p>	<p>Mari-Sys Pte Ltd. 20 Ayer Rajah Crescent, 08-21, SE 139964, Republic of Singapore Ph: +65 6776 1898 Email: info@mari-sys.com</p>	<p>Bogerd Martin NV, Oude Leeuwenrui 37 2000 Antwerp, Belgium Ph: +32 (3) 2134170 Fax: +32 (3) 2326167 Email: sales@martin.be Site: www.martin.be</p>
<p>Bogerd Martin Tianjin(China Branch) 2-B101 FTZ Hi-Tech Development Centre 131 Haibin 9 Road 300461 Tianjin China Ph: +86 22 257 62 721 Fax: +86 22 257 62 722 Email: charts-tj@martincn.com</p>	<p>C-Map Holland Paleiskade100 PO Box 7 1781 AR Den Helder, Holland Ph: +31 223 616 700 E Mail: CorMallie cor@chartworx.nl</p>	
<p>* Indicates C Map Norway AS has changed name to Jeppesen Marine Norway AS. Indicates C Map India has changed name to Jeppesen India.</p>		

List of Indian Chart Agents.

M/s OSA Books and Periodicals, R-246, Greater Kailash -I New Delhi - 110 048 Tel/Fax: 011-46557337, Mob: 9910891631, 9810705062 Email: ravipani@indiatimes.com	M/s Sterling Book House, 181, Dr. DN Road Fort, Mumbai – 400 001 Tel: 91-22-22612521, Fax: 91-22-22623551 Email : sbh@vsnl.com
M/s Global Charts & Nav. Aids Pvt. Limited 1A, Goa Mansion, Ground Floor 58, Dr. Sunderlal Bahl Path (Goa Street) Fort, Mumbai - 400 001 Tel: 91-22-22626318, 22626380, Fax: 91-22-22621488 Email: sales@bogerdmartin.com, sarmarin@vsnl.com	M/s EW Stevens & Co. (Pvt.) Ltd. Mackinnon Mackenzie Bldg, Ground Floor, 4 Shoorji Vallabhdas Marg, Mumbai-400 038 Tel: 91-22-22618567, Fax: 022-22619146 Email: ewsbom@bom3.vsnl.net.in
M/s C & C Marine Combine 25 Bank Street, 1 st Floor, Mumbai - 400 023 Tel: 91-22- 22660525, 22661937, 22672143 Fax: 91-22-22670896 Email: ccmarine@bom5.vsnl.net.in	M/s Maritime Charts and Publications New No. 221, Old No. 107, Unit No. F9, Hotel Chennai Palace, Angappa Naicken Street Chennai – 600001, Telefax : 044-42165008 Email: maritimeindia@airtelmail.in
M/s SVR Chart Agencies Door No.50-81-35/6, Santhipuram, Seetammapeta, Visakhapatnam-530 016 Tele Fax: 0891-2799471, Cell: 9440132553, 9849120988, 9885308200 Email : mahalakshmitravels@hotmail.com	M/s Jeppesen India Pvt. Ltd 505, Raheja Arcade, Sector 11 CBD, Belapur Navi Mumbai – 400 614 Tel: +91 22 5610 3668, Fax: +91 22 55939504 Mob: +9322238542 Email: raj_chakravorty@yahoo.com, info@c-map.co.in Website: www.c-map.co.in
M/s JM Maritime Services 24/24C Kavarana Building Ground Floor, Wadi Bunder P.D. Mellow Road, Mumbai – 400 009 Tel: +91 22 23736956/6907, Fax: 022 - 23725083 Cell: +91 9820788357 Email : jmms@mtnl.net.in, charts@ mtnl.net.in	M/S Inspire Shipping, 46a, Ashok Chamber, Broach Street, Masjid Bunder (E), Mumbai – 400 009 Fax : 022 – 27713146 Email : info@inspireship.com, pramod@inspireship.com
M/S Lift-O-Marine 20 Bhut Ghat Street (Near No. 3 N. S. Dock) Kolkata – 700043 Tel: +91-33-2439 5731/ 2482, Cell: +91-9331936587, 9830056801 Fax: +91-33-2439 2102, Email: liftomarine@yahoo.co.in	M/s Global Marine Infratech Pvt. Ltd. Siksha Sandan, Ground Floor, ND-7, VIP Area, IRC Village Bhubaneswar – 751015 Tel: +91-674-2550599, Fax: +91-674-2551899 Email: ashiskantha@gmiindia.in; Web: www.gmiindia.in

SECTION – V
NAVAREA - VIII WARNINGS IN FORCE

1. For details of NAVAREA limits and organisation/coordination, please refer to Notice No. 12 of the Special edition of Indian Notice to Mariners – 2008.
2. Navarea VIII Warnings Inforce as on 31 Dec 10.
2010 SERIES - 380 399 461 470 508 520 528 534 581 629 630 648 675 697 726 736 739
740 746 747 751 760 761 762 767 770 771 776 778 779 781 783 785 793 794 801 804 805
813 816 817 820 821 822 823 825 829 839 840 841 842 843 844 845 846 847 848 849
3. NAVAREA VIII Warnings issued during the period from 16 Dec 10 to 31 Dec 10 (both dates inclusive) are as tabulated below:-

796. Self Cancelling. Cancel NAVAREA VIII message 774 of 2010.
797. Self Cancelling. India West Coast-Arabian Sea. Piracy. Charts INT 71 INT 72 INT 73 INT 705. M/Vs attacked in following positions 16-10.00N 068-20.00E 160315Z Dec 12-07.00N 060-26.00E 150215Z Dec 2. Vessels are advised to keep 100 miles clear of this position and to exercise extreme caution.
798. Cancel NAVAREA VIII message 297 of 2010. India West Coast- Gulf of Kachchh. Charts 21 203 2068 INT 705. Salaya channel marking buoy Mithapur in position 22-24.80N 068-51.80E retrieved. 2. Mariners to exercise caution.
799. India West Coast – Arabian Sea. Charts 21 22 293 INT 705. 2 D seismic survey/gravity and magnetic data acquisition survey will be carried out by survey vessel western spirit from 23 Dec to 29 Dec 2010 in area bounded by:- (a) 17-51.38N 070-47.58E (b) 17-02.58N 070-47.10E (c) 17-02.70N 070-18.26E (d) 16-28.58N 070-18.20E (e) 16-28.61N 070-49.46E (f) 16-10.40N 070-49.29E (g) 16-10.45N 071-32.22E (h) 15-48.56N 071-32.24E (j) 15-48.73N 072-41.88E (k) 16-06.78N 072-41.88E (l) 16-06.58N 072-53.08E (m) 16-33.65N 072-53.23E (n) 16-33.85N 072-42.01E (p) 17-01.48N 072-41.99E (q) 17-02.03N 071-58.65E (r) 17-41.36N 071-59.28E (s) 17-41.38N 071-17.05E (t) 17-51.36N 071-07.06E 2. The vessel is towing four seismic streamers of length 10500 metres . Each of the trailing ends are attached to tail buoy with radar reflectors and flashing white light. 3. All vessels operating in the area to exercise caution and give wide berth of atleast 03 NM abeam, ahead and 08 NM astern of the vessel. 4. Cancel this message on 30 Dec 2010.
800. Self Cancelling. NAVAREA VIII-warning Inforce 380 399 461 470 503 508 516 520 526 528 534 581 629 630 648 655 675 697 721 725 726 729 736 739 740 741 746 747 750 751 752 759 760 761 762 763 767 768 770 771 776 778 779 781 783 784 785 786 788 789 790 791 792 793 794 795 796 797 798 799 OF 2010.
801. India East Coast – Bay of Bengal. Charts 31 32 INT 706. 3D seismic survey will be carried out by survey vessel Viking II from 20 Dec 2010 to 03 Jan 2011 in the area bounded by (a) 15-58.00N 084-32.00E (b) 15-25.00N 084-56.00E (c) 15-29.00N 084-04.00E (d) 16-02.00N 084-40.00E 2. The vessel will tow 8100 metres long marine seismic cable submerged seven metre below the water surface. A yellow tail buoy with flashing light is marked at the end of the cable. 3. All vessels operating in vicinity to exercise caution and give wide berth of 08 NM around the vessel. 4. Cancel this message on 04 Jan 2011.

<p>802. India West Coast – Off Okha. Charts 21 291 INT 71 INT 705. Survey vessel Geowave Commander will be carrying out seismic survey till 30 Dec 2010 in area bounded by</p> <table border="0"> <tr> <td>(a)</td> <td>21-48.06N</td> <td>068-53.95E</td> <td>(b)</td> <td>21-47.58N</td> <td>067-38.00E</td> </tr> <tr> <td>(c)</td> <td>23-03.00N</td> <td>068-14.00E</td> <td>(d)</td> <td>23-02.61N</td> <td>068-13.25E</td> </tr> <tr> <td>(e)</td> <td>22-50.50N</td> <td>068-24.66E</td> <td>(f)</td> <td>22-44.65N</td> <td>068-24.65E</td> </tr> <tr> <td>(g)</td> <td>22-41.73N</td> <td>068-34.40E</td> <td>(h)</td> <td>22-29.38N</td> <td>068-34.40E</td> </tr> <tr> <td>(j)</td> <td>22-22.36N</td> <td>068-42.68E</td> <td></td> <td></td> <td></td> </tr> </table> <p>2. The vessel will be towing six seismic streamers of length 6500 metres. Each trailing end attached to yellow coloured tail buoy with white flashing lights.</p> <p>3. All vessels operating in vicinity to give a wide berth of 05 NM around the vessel and exercise caution.</p> <p>4. Cancel this message on 31 Dec 2010.</p>	(a)	21-48.06N	068-53.95E	(b)	21-47.58N	067-38.00E	(c)	23-03.00N	068-14.00E	(d)	23-02.61N	068-13.25E	(e)	22-50.50N	068-24.66E	(f)	22-44.65N	068-24.65E	(g)	22-41.73N	068-34.40E	(h)	22-29.38N	068-34.40E	(j)	22-22.36N	068-42.68E			
(a)	21-48.06N	068-53.95E	(b)	21-47.58N	067-38.00E																									
(c)	23-03.00N	068-14.00E	(d)	23-02.61N	068-13.25E																									
(e)	22-50.50N	068-24.66E	(f)	22-44.65N	068-24.65E																									
(g)	22-41.73N	068-34.40E	(h)	22-29.38N	068-34.40E																									
(j)	22-22.36N	068-42.68E																												
<p>803. Self Cancelling. Somalia East Coast-Somali Basin. Piracy. Charts INT 71 INT 72 INT 701 INT 703. M/V attacked in position 03-05.20N 049-48.48E on 17 Dec 2010 at 0342 UTC.</p> <p>2. Vessels are advised to keep 100 miles clear of this position and to exercise extreme caution.</p>																														
<p>804. India West Coast-Off Mumbai. Charts 21 2016 INT 71 INT 705. Boat capsized in position 18-42.40N 072-49.80E on 19 Dec 2010 at 1100 UTC. Two (out of eight) crew still missing.</p> <p>2. Mariners to keep sharp lookout for survivors and render assistance.</p>																														
<p>805. India East Coast-Off Puri. Charts 31 352 INT 71 INT 706. Fishing vessel Mahadeva-3 sunk in position 19-47.21N 085-53.64E.</p> <p>2. Mariners to exercise caution.</p>																														
<p>806. India East Coast-Off Vishakhapatnam. Charts 31 354 INT 71 INT 706. Underwater firing practice will be carried out by Naval units from 0130 UTC to 0830 UTC on 24 Dec 2010 in area bounded by</p> <table border="0"> <tr> <td>(a)</td> <td>17-16.50N</td> <td>084-30.00E</td> <td>(b)</td> <td>17-16.50N</td> <td>084-09.00E</td> </tr> <tr> <td>(c)</td> <td>16-56.50N</td> <td>084-09.00E</td> <td>(d)</td> <td>16-56.50N</td> <td>084-30.00E</td> </tr> </table> <p>2. Mariners to exercise caution</p> <p>3. Cancel this message on 24 Dec 2010 at 1130 UTC</p>	(a)	17-16.50N	084-30.00E	(b)	17-16.50N	084-09.00E	(c)	16-56.50N	084-09.00E	(d)	16-56.50N	084-30.00E																		
(a)	17-16.50N	084-30.00E	(b)	17-16.50N	084-09.00E																									
(c)	16-56.50N	084-09.00E	(d)	16-56.50N	084-30.00E																									
<p>807. Self Cancelling. Cancel NAVAREA VIII message 798 of 2010. India West Coast-Gulf of Kachchh. Charts 21 203 2068 INT 705. Salaya channel marking buoy Mithapur re-established in position 22-24.72N 068-51.83E.</p>																														
<p>808. Self Cancelling. Indian Ocean-Western Part. Charts INT 71 INT 72 INT 73 INT 703. Piracy. Previously hijacked M/V Izumi sighted conducting mothership operations in following positions</p> <table border="0"> <tr> <td>03-19.00N</td> <td>055-34.00E</td> <td>180936Z DEC</td> </tr> <tr> <td>04-35.33N</td> <td>058-09.54E</td> <td>182341Z DEC</td> </tr> <tr> <td>07-17.49N</td> <td>059-48.30E</td> <td>191541Z DEC</td> </tr> <tr> <td>08-51.26N</td> <td>060-22.47E</td> <td>192341Z DEC</td> </tr> <tr> <td>09-10.00N</td> <td>060-28.00E</td> <td>200314Z DEC</td> </tr> </table> <p>2. Mariners to exercise extreme caution and keep 100 miles clear of this position.</p>	03-19.00N	055-34.00E	180936Z DEC	04-35.33N	058-09.54E	182341Z DEC	07-17.49N	059-48.30E	191541Z DEC	08-51.26N	060-22.47E	192341Z DEC	09-10.00N	060-28.00E	200314Z DEC															
03-19.00N	055-34.00E	180936Z DEC																												
04-35.33N	058-09.54E	182341Z DEC																												
07-17.49N	059-48.30E	191541Z DEC																												
08-51.26N	060-22.47E	192341Z DEC																												
09-10.00N	060-28.00E	200314Z DEC																												
<p>809. Self Cancelling. Cancel NAVAREA VIII message 725 of 2010. India West Coast – Gulf of Kachchh. Charts 21 203 2068 INT 705. Salaya channel marking buoy Chandri re-established in position 22-37.14N 069-07.48E.</p> <p>2. Mariners to exercise caution.</p>																														
<p>810. India East Coast – Bay of Bengal. Charts 21 292 INT 71 INT 705. Following moored buoys deployed in positions</p> <table border="0"> <thead> <tr> <th></th> <th>Buoy</th> <th>Position</th> <th></th> </tr> </thead> <tbody> <tr> <td>(a)</td> <td>AD 01</td> <td>19-00.20N</td> <td>066-59.64E</td> </tr> <tr> <td>(b)</td> <td>AD 02</td> <td>14-59.94N</td> <td>068-59.98E</td> </tr> </tbody> </table> <p>2. Buoys are yellow coloured disc shaped, 03 metre dia, 3.5 metre mast carrying meteorological sensors fitted with radar reflectors. Data transmission through INMARSAT modem once in 1 hour / 3 hour to shore station at NIOT Chennai.</p> <p>3. The buoys are integrated with yellow beacon light, flashes 05 sec and is off for 15 sec and range 04 NM.</p> <p>4. Mariners are strongly advised not to anchor or trawl in the operation circle of 1 NM of moored data buoy.</p>		Buoy	Position		(a)	AD 01	19-00.20N	066-59.64E	(b)	AD 02	14-59.94N	068-59.98E																		
	Buoy	Position																												
(a)	AD 01	19-00.20N	066-59.64E																											
(b)	AD 02	14-59.94N	068-59.98E																											
<p>811. Self Cancelling. Indian Ocean-Western Part. Charts INT 71 INT 72 INT 73 INT 703. Piracy. M/V Orna hijacked in position 01-46.00S 060-32.00E on 20 Dec 2010 at 1129 UTC.</p> <p>2. Mariners to exercise extreme caution and keep 100 miles clear of this position.</p>																														
<p>812. Self Cancelling. Refer NAVAREA VIII message 808 of 2010. Indian Ocean-Western Part. Charts INT 71 INT 72 INT 73 INT 703. Piracy. Hijacked M/V Izumi conducting mothership operations in position 11-36.00N 061-33.00E on 20 Dec 2010 at 2340 UTC.</p> <p>2. Mariners to exercise extreme caution and keep 100 miles clear of this position.</p>																														

813. Cancel NAVAREA VIII message 810 of 2010. India West Coast – Arabian Sea. Charts 21 292 INT 71 int 705 . Following moored buoys deployed in positions.				
	Buoy	Position		
(a)	AD 01	19-00.20N	066-59.64E	
(b)	AD 02	14-59.94N	068-59.98E	
2.	Buoys are yellow coloured discuss shaped, 03 metre dia, 3.5 metre mast carrying meteorological sensors fitted with radar reflectors . Data transmission through INMARSAT modem once in 1 hour / 3 hour to shore station at NIOT Chennai.			
3.	The buoys are integrated with yellow beacon light, flashes 05 sec and is off for 15 sec and range 04 NM.			
4.	Mariners are strongly advised not to anchor or trawl in the operation circle of 1 NM of moored data buoy.			
814. Self Cancelling. Refer NAVAREA VIII messages 808 and 812 of 2010. Indian Ocean-Western Part. Charts INT 71 INT 72 INT 73 INT 703 INT 705. Piracy. Hijacked M/V Izumi conducting mothership operations in position 12-22.10N 062-05.10E on 21 Dec 2010 at 2341 UTC.				
2.	Mariners to exercise extreme caution and keep 100 miles clear of this position.			
815. Self Cancelling. Indian Ocean-Western Part. Charts INT 71 INT 72 INT 73 INT 703 INT 705. Piracy. M/V attacked in position 12-10.00N 060-31.00E on 22 Dec 2010 at 0312 UTC.				
2.	Mariners to exercise extreme caution and keep 100 miles clear of this position.			
816. India East Coast-Bay of Bengal. Charts 31 INT 71 INT 706. Survey vessel Geowave champion will carry out 3D seismic survey from 24 Dec 2010 to 05 Jan 2011 in area bounded by				
(a)	15-00.00N	083-59.50E	(b)	15-00.00N 084-30.50E
(c)	14-07.00N	084-30.50E	(d)	14-07.00N 083.59.50E
2.	The vessel will be towing ten marine seismic cable of 8100 metres length which will be submerged 08 metre below the water surface and also on the surface at times. Yellow tail buoy with a flashing light attached at the end of cable.			
3.	All vessels operating in the area to exercise caution and give wide berth of 06 NM around the vessel.			
4.	Cancel this message on 06 Jan 2011.			
817. Indian Ocean-Off Maldives. Charts 23 266 267 INT 71 INT 72 INT 73 INT 703 INT 707. Hydrographic survey will be carried out by hydrographic vessel from 27 Dec 2010 to 07 Feb 2011 in area bounded by				
(a)	04-50.00N	073-30.00E	(b)	04-50.00N 078-50.00E
(c)	04-00.00S	078-50.00E	(d)	04-00.00S 073.30.00E
2.	All vessels operating in area to exercise caution.			
3.	Cancel this message on 08 Feb 2011.			
818. Self Cancelling. Cancel NAVAREA VIII messages 516 763 and 786 of 2010 issued by INM 24 of 2010.				
819. Self Cancelling. Cancel NAVAREA VIII messages 503 and 789 of 2010.				
820. Indian Ocean-India West and South Coast. Charts 21 22 32 INT 71 INT 73 INT 705 INT 706 INT 707. Eight in number underwater moorings have been deployed by National Institute of Oceanography in following positions				
	Mooring	Position	Depth of water column (metres)	Nominal depth of ADCP (metres)
	OKS 3	09-00.15N 075-57.36E	160	150
	OGD 6	15-09.20N 072-42.88E	1115	332
	OMD 3	19-59.88N 069-14.00E	1128	345
	OGS 6	15-10.94N 073-03.55E	133	106
	OKD 3	09-02.67N 075-26.28E	1130	365
	SSMD 2	08-48.03N 079-10.78E	1022	82
	KKD 2	06-57.73N 077-23.91E	995	275
	KKS 2	06-59.83N 077-26.83E	690	160
2.	Each mooring consists of an upward looking Acoustic Doppler Profiler (ADCP) for measuring the current over the shelf and slope regions simultaneously for a period of one year.			
3.	Mariners to exercise caution.			
4.	Cancel this message on 21 Dec 2011.			
821. India West Coast-Arabian Sea. Charts 21 291 293 INT 71 INT 705. Following rigs have been deployed for drilling operations in positions				
	DEEP SEA FOSSIL	22-38.63N	068-23.10E	
	DEEP SEA FORTUNE	19-25.65N	071-16.23E	
2.	Wide berth requested.			
822. India West Coast-Arabian Sea. Charts 21 22 255 293 INT 71 INT 705. Trawler Varad Vinayak sunk in position 18-33.66N 071-00.22E on 22 Dec 2010 at 1512 UTC.				
2.	Mariners to exercise caution .			

823. India West Coast – Arabian Sea. Charts 21 22 293 INT 705. 2 D seismic survey/gravity and magnetic data acquisition survey will be carried out by survey vessel western spirit in area bounded by					
From 30 Dec 2010 to 02 Jan 2011					
(a)	17-02.70N	070-18.26E	(b)	16-28.58N	070-18.20E
(c)	16-28.61N	070-49.46E	(d)	16-10.40N	070-49.48E
(e)	16-10.45N	071-32.22E	(f)	15-48.56N	071-32.24E
(g)	15-48.73N	072-41.88E	(h)	16-06.78N	072-41.88E
(j)	16-06.58N	072-53.08E	(k)	16-33.65N	072-53.23E
(l)	16-33.85N	072-42.01E	(m)	17-01.48N	072-41.99E
(n)	17-01.40N	072-11.70E	(p)	17-11.19N	072-11.86E
(q)	17-11.74N	071-33.03E	(r)	17-02.28N	071-32.93E
From 03 Jan 2011 to 14 Jan 2011					
(a)	17-11.44N	071-33.02E	(b)	15-48.33N	071-32.14E
(c)	15-48.44N	072-41.53E	(d)	16-06.47N	072-41.53E
(e)	16-06.35N	072-53.05E	(f)	16-33.39N	072-53.14E
(g)	16-33.51N	072-42.01E	(h)	17-01.29N	072-41.59E
(j)	17-01.24N	072-11.42E	(k)	17-11.11N	072-11.52E
2. The vessel is towing four seismic streamers of length 10500 metres. Each of the trailing ends are attached to tail buoy with radar reflectors and flashing white light.					
3. All vessels operating in the area to exercise caution and give wide berth of at least 03 NM abeam, ahead and 08 NM astern of the vessel.					
4. Cancel this message on 15 Jan 2011.					
824. Self Cancelling. Refer NAVAREA VIII messages 812 and 814 of 2010. Indian Ocean-Western Part. Charts INT 71 INT 72 INT 73 INT 703 INT 705. Piracy. Hijacked M/V Izumi conducting mothership operations on 22 Dec 2010 in following positions					
	11-22.00N	061-16.00E		2340 UTC	
	12-00.06N	062-23.31E		1541 UTC	
2. Mariners to exercise extreme caution and keep 100 miles clear of this position.					
825. Refer NAVAREA VIII messages 740 and 794 of 2010. India West Coast-Arabian Sea. Charts 21 292 INT 71 INT 705. Following rigs moved to new positions					
	SAGAR SHAKTI	19-35.41N		071-16.65E	
	ABAN IV	19-36.00N		071-00.00E	
2. Wide berth requested.					
826. Self Cancelling. Refer NAVAREA VIII messages 812 814 and 824 of 2010. Indian Ocean-Western Part. Charts INT 71 INT 72 INT 73 INT 703 INT 705. Piracy. Hijacked M/V Izumi conducting mothership operations on 23dec 2010 in following positions					
	10-38.0N	066-33.0E		0741 UTC	
2. Mariners to exercise extreme caution and keep 100 miles clear of this position.					
827. Self Cancelling. Cancel NAVAREA VIII message 826 of 2010. Piracy. Indian Ocean – Western Part. Charts INT 71 INT 72 INT 73 INT 703. M/V Izumi conducting mothership activity in following positions.					
	10-38N	060-33E		230741Z Dec	
	09-26N	058-10E		231940Z Dec	
	08-37N	056-34E		240340Z Dec	
2. Mariners to exercise extreme caution and keep 100 miles clear of this position.					
828. Self Cancelling. Indian Ocean-Western Part. Charts INT 70 INT 71 INT 72 INT 701 INT 702 INT 703. Piracy. M/Vessels conducting possible mothership operations in following positions.					
	06-21S	49-40E		231636Z Dec	
	09-42N	055-47E		232030Z Dec	
	09-21.24S	049-09.02E		240842Z Dec	(M/V Polar)
2. Mariners to exercise extreme caution and keep 100 miles clear of this position.					
829. India West Coast – Mormugao. Chart 22 257 INT 705 INT 706. Firing practice by naval aircraft between 0230 UTC to 1230 UTC from 01 to 07 Jan 2011. Danger area bounded by:					
(a)	15-13.00N	073-57.00E	(b)	15-13.00N	073-52.00E
(c)	15-11.00N	073-52.00E	(d)	15-11.00N	073-57.00E
2. Safe flying height 3500 metres.					
3. Cancel this message on 08 Jan 2011.					

<p>830. Self Cancelling. NAVAREA VIII-Warning inforce: 380 399 461 470 508 520 526 528 534 581 629 630 648 675 697 721 726 736 739 740 746 747 751 759 760 761 762 767 768 770 771 776 778 779 781 783 784 785 792 793 794 799 801 804 805 813 814 815 816 817 818 819 820 821 822 823 824 825 827 828 829 of 2010.</p>																								
<p>831. Self Cancelling. Cancel NAVAREA VIII message 830 of 2010.</p>																								
<p>832. Self Cancelling. Piracy. Indian Ocean – Western Part. Charts INT 71 INT 72 INT 703. M/V Izumi conducting mothership activity in position 07-50N 055-08E at 241026 Z. 2. Mariners to exercise extreme caution and keep 100 miles clear of this position.</p>																								
<p>833. Cancel NAVAREA VIII message 802 of 2010. India West Coast-Off Okha. Charts 21 291 292 INT 71 INT 705. Survey vessel Geowave commander will be carrying out seismic survey till 30 Dec 2010 in area bounded by:</p> <table border="0"> <tr> <td>(a) 22-45.00N</td> <td>068-14.00E</td> <td>(b) 22-45.00N</td> <td>068-21.25E</td> </tr> <tr> <td>(c) 22-35.08N</td> <td>068-21.25E</td> <td>(d) 22-35.00N</td> <td>068-33.30E</td> </tr> <tr> <td>(e) 22-16.00N</td> <td>068-33.30E</td> <td>(f) 22-16.00N</td> <td>068-25.88E</td> </tr> <tr> <td>(g) 22-27.00N</td> <td>068-25.88E</td> <td>(h) 22-27.00N</td> <td>068-14.00E</td> </tr> </table> <p>2. The vessel will be towing six seismic streamers of length 6500 metres. Each of the trailing ends are attached to yellow coloured tail buoy with white flashing lights. 3. All vessels operating in vicinity to give a wide berth of 05 NM around the vessel and exercise caution. 4. Cancel this message on 31 Dec 2010.</p>	(a) 22-45.00N	068-14.00E	(b) 22-45.00N	068-21.25E	(c) 22-35.08N	068-21.25E	(d) 22-35.00N	068-33.30E	(e) 22-16.00N	068-33.30E	(f) 22-16.00N	068-25.88E	(g) 22-27.00N	068-25.88E	(h) 22-27.00N	068-14.00E								
(a) 22-45.00N	068-14.00E	(b) 22-45.00N	068-21.25E																					
(c) 22-35.08N	068-21.25E	(d) 22-35.00N	068-33.30E																					
(e) 22-16.00N	068-33.30E	(f) 22-16.00N	068-25.88E																					
(g) 22-27.00N	068-25.88E	(h) 22-27.00N	068-14.00E																					
<p>834. Self Cancelling. NAVAREA VIII-Warning inforce: 380 399 461 470 508 520 526 528 534 581 629 630 648 675 697 721 726 736 739 740 746 747 751 759 760 761 762 767 768 770 771 776 778 779 781 783 784 785 792 793 794 799 801 804 805 813 814 815 816 817 818 819 820 821 822 823 824 825 827 828 829 831 832 833 of 2010.</p>																								
<p>835. Self Cancelling. Cancel NAVAREA VIII message 784 of 2010.</p>																								
<p>836. Self Cancelling. Indian Ocean Western Part - Somalia East and Madagascar North-east coast. Charts INT 70 INT 71 INT 72 INT 701 INT 702 INT 703. Piracy. Possible mothership/piracy activity in following positions:</p> <table border="0"> <tr> <td>06-30N 052-18E</td> <td>242340Z DEC</td> <td>M/V Izumi</td> </tr> <tr> <td>04-35N 048-06E</td> <td>251940Z DEC</td> <td>M/V Izumi</td> </tr> <tr> <td>12-45S 051-46E</td> <td>250650Z DEC</td> <td></td> </tr> <tr> <td>14-28S 055-15E</td> <td>260802Z DEC</td> <td>M/V Polar</td> </tr> <tr> <td>14-45S 055-51E</td> <td>261052Z DEC</td> <td></td> </tr> <tr> <td>11-16N 054-45E</td> <td>260325Z DEC</td> <td></td> </tr> <tr> <td>14-53S 056-00E</td> <td>261057Z DEC</td> <td></td> </tr> <tr> <td>07-20N 049-50E</td> <td>261330Z DEC</td> <td></td> </tr> </table> <p>2. Mariners to exercise extreme caution and keep 100 miles clear of this position.</p>	06-30N 052-18E	242340Z DEC	M/V Izumi	04-35N 048-06E	251940Z DEC	M/V Izumi	12-45S 051-46E	250650Z DEC		14-28S 055-15E	260802Z DEC	M/V Polar	14-45S 055-51E	261052Z DEC		11-16N 054-45E	260325Z DEC		14-53S 056-00E	261057Z DEC		07-20N 049-50E	261330Z DEC	
06-30N 052-18E	242340Z DEC	M/V Izumi																						
04-35N 048-06E	251940Z DEC	M/V Izumi																						
12-45S 051-46E	250650Z DEC																							
14-28S 055-15E	260802Z DEC	M/V Polar																						
14-45S 055-51E	261052Z DEC																							
11-16N 054-45E	260325Z DEC																							
14-53S 056-00E	261057Z DEC																							
07-20N 049-50E	261330Z DEC																							
<p>837. Self Cancelling. Cancel NAVAREA VIII message 768 of 2010.</p>																								
<p>838. Self Cancelling. Indian Ocean - Madagascar East Coast. Charts INT 70 INT 71 INT 72 INT 702. Piracy. Mothership activity in position 15-46S 055-32E at 270512Z DEC. 2. Mariners to exercise extreme caution and keep 100 miles clear of this position.</p>																								
<p>839. Self Cancelling. Indian Ocean - Madagascar Northeast coast. Charts INT 70 INT 71 INT 72 INT 702. Piracy. Possible Mothership/Piracy activity in position 14-31S 055-20E on 27 Dec 2010 at 1244 UTC. 2. Mariners to exercise extreme caution and keep 100 miles clear of this position.</p>																								
<p>840. Cancel NAVAREA VIII message 833 of 2010. India West Coast-Off Karwar. Charts 22 293 INT 71 INT 705. Survey vessel Geowave commander will carry out seismic survey from 29 Dec 2010 to 10 Jan 2011 in area bounded by:</p> <table border="0"> <tr> <td>(a) 14-59N</td> <td>071-46E</td> <td>(b) 14-59N</td> <td>072-29E</td> </tr> <tr> <td>(c) 14-05N</td> <td>072-30E</td> <td>(d) 14-05N</td> <td>071-46E</td> </tr> </table> <p>2. The vessel will be towing six seismic streamers of length 6500 metres. Each of the trailing ends are attached to yellow coloured tail buoy with white flashing lights. 3. All vessels operating in vicinity to give a wide berth of 05 NM around the vessel and exercise caution. 4. Cancel this message on 11 Jan 2011.</p>	(a) 14-59N	071-46E	(b) 14-59N	072-29E	(c) 14-05N	072-30E	(d) 14-05N	071-46E																
(a) 14-59N	071-46E	(b) 14-59N	072-29E																					
(c) 14-05N	072-30E	(d) 14-05N	071-46E																					
<p>841. Refer NAVAREA VIII message 739 of 2010. India East Coast-Bay of Bengal. Charts 31 352 354 355 INT 71 INT 706. Following rigs moved to new positions:</p> <table border="0"> <tr> <td>DISCOVERER SEVEN SEAS</td> <td>19-36.33N</td> <td>087-22.82E</td> </tr> <tr> <td>SAGAR VIJAY</td> <td>16-32.60N</td> <td>082-23.95E</td> </tr> <tr> <td>DEEP DRILLER 1</td> <td>16-40.27N</td> <td>082-28.18E</td> </tr> </table> <p>2. Wide berth requested.</p>	DISCOVERER SEVEN SEAS	19-36.33N	087-22.82E	SAGAR VIJAY	16-32.60N	082-23.95E	DEEP DRILLER 1	16-40.27N	082-28.18E															
DISCOVERER SEVEN SEAS	19-36.33N	087-22.82E																						
SAGAR VIJAY	16-32.60N	082-23.95E																						
DEEP DRILLER 1	16-40.27N	082-28.18E																						

<p>842. Self Cancelling. Indian Ocean-Western Part. Charts INT 71 INT 72 INT 703. Piracy. Possible mothership activities in following positions: 01-14.9N 056-12.0E 280957Z DEC 00-36.0N 058-37.0E 290304Z DEC M/V York</p> <p>2. Mariners to exercise extreme caution and keep 100 miles clear of this position.</p>														
<p>843. India East Coast – Off Suryalanka. Charts 31 32 355 3026 INT 706. Firing exercise by IAF from firing point 15-50.5N 080-29.5E between 0130 UTC to 1630 UTC on 5, 6, 7 and 8 Jan 2011. Danger area is an arc of 60 NM radius between 100 degree and 210 degree from firing point.</p> <p>2. No over flight permissible and mariners to exercise caution. 3. Cancel this message on 09 Jan 2011.</p>														
<p>844. India West Coast–Okha. Charts 21 202 203 251 271 291 2013 2068 INT 705. Seaward firing practice by naval coast battery on 05 Jan 2011 from 1030 UTC to 1230 UTC.</p> <p>2. Danger area from 300 degree to 020 degree up to 12 NM seaward from 22-28.11N 069-04.00E. 3. Safe flying height 13000 metres. 4. Cancel this message on 06 Jan 2011.</p>														
<p>845. India East Coast- Bay of Bengal. Charts 32 357 INT 71 INT 706. Survey vessel Viking Vision will carry out 3 D seismic survey from 01 to 15 Jan 2011 in area bounded by:</p> <table border="0"> <tr> <td>(a)</td> <td>12-03.35N</td> <td>081-36.12E</td> <td>(b)</td> <td>12-34.34N</td> <td>081-36.15E</td> </tr> <tr> <td>(c)</td> <td>12-34.46N</td> <td>081-15.00E</td> <td>(d)</td> <td>12-03.37N</td> <td>081-15.00E</td> </tr> </table> <p>2. The vessel will be towing 10 streamer cables of length 8100 metres. Each end of the cable is marked with yellow coloured tail buoy with flashing white light. 3. All vessels operating in area to exercise caution and give wide berth at least 07 NM around the vessel. 4. Cancel this message on 15 Jan 2011 at 1829 UTC.</p>	(a)	12-03.35N	081-36.12E	(b)	12-34.34N	081-36.15E	(c)	12-34.46N	081-15.00E	(d)	12-03.37N	081-15.00E		
(a)	12-03.35N	081-36.12E	(b)	12-34.34N	081-36.15E									
(c)	12-34.46N	081-15.00E	(d)	12-03.37N	081-15.00E									
<p>846. Self Cancelling. Refer NAVAREA VIII message 526 of 2010. India West Coast-Gulf of Khambhat. Charts 21 292 INT 71 INT 705. Narmada channel marking buoy number 6 re-established in position 20-53N 072-06E.</p>														
<p>847. India East Coast-Bay of Bengal. Charts 31 32 INT 71 INT 706. Firing will be carried out by naval ships from 06 to 08 Jan 2011 between 0330 UTC 0830 UTC in area bounded by:</p> <table border="0"> <tr> <td>(a)</td> <td>16-09.00N</td> <td>083-59.00E</td> <td>(b)</td> <td>15-26.50N</td> <td>084-44.00E</td> </tr> <tr> <td>(c)</td> <td>14-38.00N</td> <td>084-07.50E</td> <td>(d)</td> <td>15-20.00N</td> <td>083-24.00E</td> </tr> </table> <p>2. Safe flying height 10000 metres. 3. Mariners to exercise caution. 4. Cancel this message on 09 Jan 2011.</p>	(a)	16-09.00N	083-59.00E	(b)	15-26.50N	084-44.00E	(c)	14-38.00N	084-07.50E	(d)	15-20.00N	083-24.00E		
(a)	16-09.00N	083-59.00E	(b)	15-26.50N	084-44.00E									
(c)	14-38.00N	084-07.50E	(d)	15-20.00N	083-24.00E									
<p>848. India West Coast - Kochi. Charts 22 32 220 259 260 2004 2029 2045 INT 706. Firing by Naval Coast Battery on following dates:</p> <table border="0"> <tr> <td>Date</td> <td>Time (UTC)</td> </tr> <tr> <td>04, 11 Jan 2011</td> <td>0900 TO 1200</td> </tr> <tr> <td>07, 14 Jan 2011</td> <td>0900 TO 1200 and 1230 TO 1430</td> </tr> </table> <p>2. Danger area bounded by:</p> <table border="0"> <tr> <td>(a) 09-57.50N</td> <td>075-59.50E</td> <td>(b) 09-57.70N</td> <td>076-14.20E</td> </tr> <tr> <td>(c) 09-44.00N</td> <td>076-17.50E</td> <td>(d) 09-42.50N</td> <td>076-09.50E</td> </tr> </table> <p>3. Safe flying height 10000 metres. 4. Cancel this message on 15 Jan 2011.</p>	Date	Time (UTC)	04, 11 Jan 2011	0900 TO 1200	07, 14 Jan 2011	0900 TO 1200 and 1230 TO 1430	(a) 09-57.50N	075-59.50E	(b) 09-57.70N	076-14.20E	(c) 09-44.00N	076-17.50E	(d) 09-42.50N	076-09.50E
Date	Time (UTC)													
04, 11 Jan 2011	0900 TO 1200													
07, 14 Jan 2011	0900 TO 1200 and 1230 TO 1430													
(a) 09-57.50N	075-59.50E	(b) 09-57.70N	076-14.20E											
(c) 09-44.00N	076-17.50E	(d) 09-42.50N	076-09.50E											
<p>849. Cancel NAVAREA VIII message 526 of 2010. India West Coast-Gulf of Khambhat. Charts 21 292 INT 71 INT 705. Narmada channel marking buoy number 1 retrieved for maintenance.</p>														

SECTION – VI
CORRECTIONS TO SAILING DIRECTIONS (PILOTS)

(Note: For hard copy in colour, kindly download from www.hydrobharat.nic.in Indian Notices to Mariners section)

West Coast of India Pilot (INP-1)
Chapter -7 (Page – 229)

(Source: Jawaharlal Nehru Port Trust)

Article 7.188

Delete para 2 and replace by

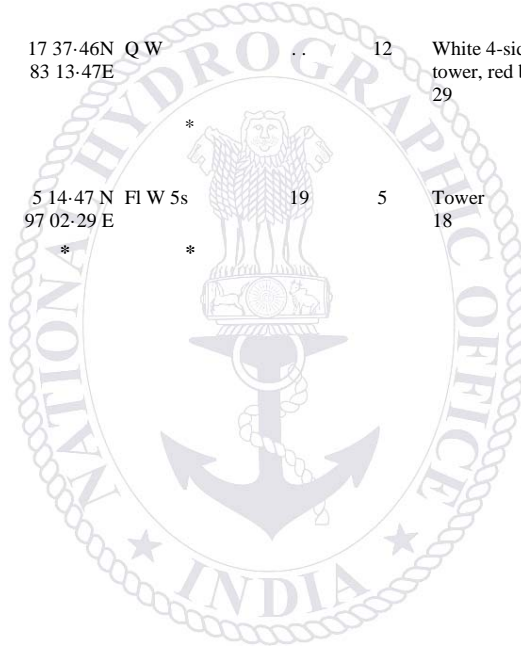
2 Anchorages for the vessels bound for JNP in the outer waiting area is bounded by following coordinates:

BRAVO (EAST)		BRAVO (WEST)	
18°48'.40N	72° 38'.90E	18°48'.40N	72° 31'.90E
18°48'.20N	72° 35'.60E	18°49'.20N	72° 25'.60E
18°44'.50N	72° 34'.90E	18°40'.00N	72° 25'.60E
18°45'.00N	72° 38'.90E	18°40'.60N	72° 30'.50E

While anchoring within the above area, it is advisable that smaller vessels may anchor in BRAVO 'EAST' and other vessels in BRAVO 'WEST' in accordance with the charted depths keeping clear of the cables and foul ground.

SECTION – VII
CORRECTIONS TO LIST OF LIGHTS

No	Name & Location	Position (Lat-Long)	Characteristics	Ht. mts	Range miles	Structure & Height (mts)	Remarks
D7318-4	Bandar Al Rowdha. Marina. E Breakwater. Head	23 35.03N 58 36.48 E *	Fl(2)R 5s	9	3	Metal post 2 *	TE 2010 *
D7318-5	Bandar Al Rowdha. Marina. N Breakwater. Head	23 35.03N 58 36.44 E *	Fl(4)G 15s	7	3	Metal post 1 *	TE 2010 *
D7420	-	27 16.70N 51 02.98 E *	Fl R 4s *	..	5	Black metal pole, orange and white bands *	Reported (T) 2010 *
F0969-21	- Transit. Rear. 500m from front	17 37.46N 83 13.47E *	Q W	..	12	White 4-sided framework tower, red bands 29	
F1321-6	Kruenggeukueh. W Breakwater *	5 14.47 N 97 02.29 E *	Fl W 5s *	19	5	Tower 18	fl 0.5



SECTION – VIII
CORRECTION TO LIST OF RADIO SIGNALS

INP 31(1), 2005

(Last correction: Edition No. 07 dated 01 Apr 2009)

NIL

INP 31(2), 2007

(Last correction: Edition No. 24 dated 16 Dec 10)

NIL

INP 31(5), 1997

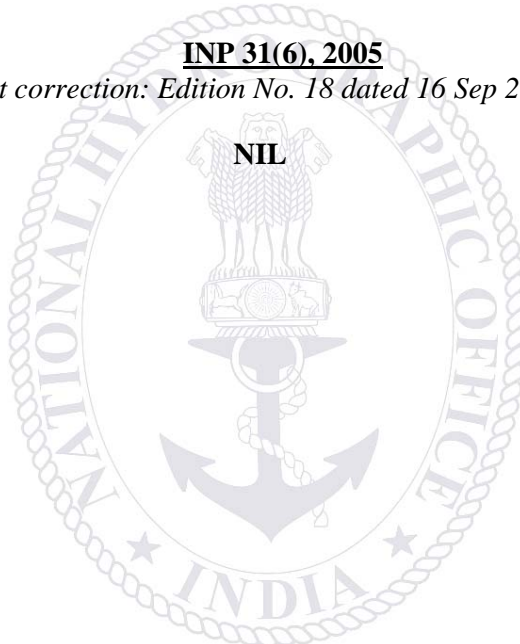
(Last correction: Edition No. 07 dated 01 Apr 09)

NIL

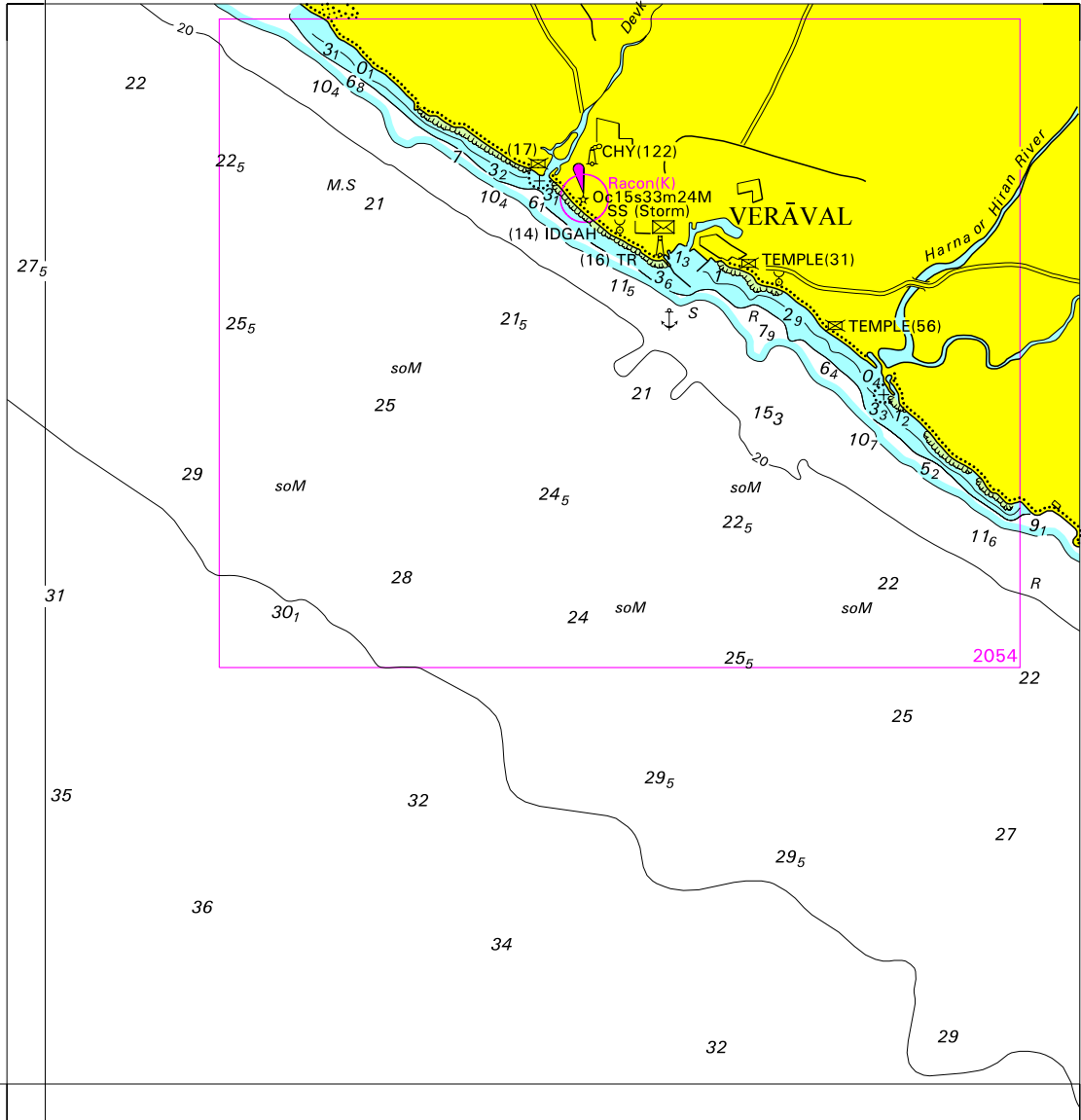
INP 31(6), 2005

(Last correction: Edition No. 18 dated 16 Sep 2010)

NIL



70° 15' To accompany Notices to Mariners No 32/2011



70° 15' Block correction for chart No. 206

SECTION – IX **REPORTING OF NAVIGATIONAL DANGERS**

Appeal to all Mariners

1. Mariners at sea whilst on passage, or whilst entering / leaving ports / harbours and other waterways, are requested to look out for new or suspected dangers to navigation, changes in aids to navigation, or corrections to published charts and Sailing Directions. Whenever any such changes / dangers are observed, mariners are requested to notify the same to the Chief Hydrographer to the Government of India at the following address: -

National Hydrographic Office
107-A, Rajpur Road,
Dehradun - 248001
(UTTARAKHAND), INDIA
e-mail: - inho-navy@nic.in, msis-inho-navy@nic.in
Fax No.: +91-135- 2748373
WEB: www.hydrobharat.nic.in

Instructions for filling up IH 102

2. Kindly follow the instructions below in order to help the Hydrographic Office (the recipient) to quickly issue NAVAREA warning / Notice to Mariners for the benefit of all other mariners at sea.

Position Reporting

3. When a position is defined by bearings (true or magnetic to be specified) more than two bearings should be used in order to provide a check. Distances observed by Radar should be corrected for index errors. Latitude and Longitude obtained from GPS / DGPS should specify the datum (WGS 84 or other). A copy / tracing from the largest scale chart may be used for forwarding details, with the corrections and additions being shown thereon in red.

Depth Reporting

4. When soundings are obtained using Echo Sounders, the echo-gram should be duly annotated with date, time, position and depth, etc., before enclosing it with the Form IH 102. It is important to state whether echo sounder is set to register depths below the surface or below the keel; in the latter case the vessel's draught should be given. Time and date should be given in order that corrections for the height of the tide may be applied where necessary. The make, name and type of echo sounder should also be given. Care should be taken to set the echo sounder to the largest scale / phase, so as to obtain maximum details of echo of the feature. Efforts should be made to identify and negate false echoes if any.

5. Reports, which cannot be confirmed or are lacking in certain details should not be withheld. Limitations or shortcomings should be duly notified in the form.

6. Reports on shoal soundings, uncharted dangers and navigational aids out of order should be reported through fastest available means at the mariner's discretion, and also be made by radio to the nearest coast radio station. The draught of modern tankers is such that any uncharted depth under 50 metres should be of sufficient importance to justify a radio message.

7. Port information should be forwarded on form IH 102a together with IH 102. Form 102a contains the information required for Sailing Direction and should be used as an *aide memoir*. Where there is insufficient space on the form, additional sheet should be used.

Please Note: - The receipt of all Hydrographic Notes will be duly acknowledged by the Hydrographic Office. Normally, the sender's ship or name is quoted as the source when the Notices to Mariners reporting the change is issued, unless the information is received through a foreign Notices to Mariners. Further communication from the Hydrographic Office to the sender of the hydrographic note will only be necessary to verify unusual features or abnormal values reported.

I.H. 102**HYDROGRAPHIC NOTE****(For Reporting Navigational Dangers/ Changes observed at Sea by Mariners)**

1. Name of ship or sender	
2. Address of sender	
(i) E-mail	
(ii) Fax No.	
(iii) Tel. No.	
3. General Locality	
4. Chart / Publication Affected:	
(i) Chart published by INHO / UKHO / other (Specify).	
(ii) Chart No.	
(iii) Edition Date.	
(iv) Latest Edition of Indian N to M held	
5. Details of Changes / Dangers Observed.	
Object of Change.	
(i) Date/Time of observation	
(ii) Charted Observed	
(iii) Position/Area	
(a) Bathymetry:	
(i) Depth	
(ii) Depth Contour	
(iii) Channel Depth	
(b) Navigational Dangers:	
(i) New Shoals	
(ii) New Rocks	
(iii) New Reefs	
(iv) New Wrecks	
(v) New Nav-aid (Specify)	
(c) Casualties to existing Nav-Aids:	
(i) Buoys	
(ii) Lights	
(iii) Fog signals	
(iv) Racons	
(v) Transit Marks	
(vi) Leading Lines	
(vii) Clearance bearings	
(d) Designated Areas:	
(i) Exercise Areas	
(ii) Prohibited Areas	
(iii) Pilot Station	
(iv) Anchorage	
(v) Foul Ground	

(e) Port Information:	
(i) Berthing	
(ii) Cranage	
(iii) Tugs	
(iv) Dry Docks	
(v) Repair Facilities	
(vi) Pilotage	
(vii) Fuel	
(viii) Water	
(ix) Any other (Specify)	
(f) Environmental Data	
(i) Met information	
(ii) Tides and Tidal Stream	
(iii) Pollutants	
(iv) Effluents	
(v) Marine Life / Habitats	
(g) Other changes, if any, with Details:	
6. Information on the Positions of Danger / Changes Reported above:	
(a) Positioning System used	
(b) Datum [WGS/Everest/ Local (Specify)]	
(c) Accompanying plots / photographs if any	
7. Information on the Soundings / Depths Reported above:	
(a) Echo Sounder (Type) used	
(b) Draught of Vessel set on Echo Sounder	
(c) Observed water depth vis-à-vis charted depth	
(d) Echo-gram accompanying this report: Yes / No	
(e) Whether voltage drop existed in equipment at observation time	
(f) Data and Time of depth observation	
8. Limitations if any in Reporting the changes above	

Filled By
(Name & Designation)

Checked by
(Name & Designation)

Place
Date

I.H. 102a**HYDROGRAPHIC NOTE FOR PORT INFORMATION****(For Reporting Changes to Port Information)**

1 Name and Address of the Port.	
(a) Name	
(b) Address	
(c) Phone No's	
(d) Web Site	
(e) E Mail	
2 General Remarks	
(a) Principal activities and trade	
(b) Number of ships and tonnage handled per year	
(c) Maximum size of draught of vessel handled	
(d) Soft copy of port handbook	
3 Anchorages	
(a) Type/Purpose	
(b) Minimum depth	
(c) Shelter afforded	
(d) Holding Ground	
(e) Recommended Pilotage to the anchorages	
(f) Request Pilots appreciation to the approach of anchorage area	
4 Pilotage	
(a) Authority for request	
(b) Embarkation Position	
(c) Regulations	
(d) Documents to be provided	
(e) Request Pilots appreciation to the approach of inner harbour and berths.	
(f) Information on Vessel Traffic Management System (VTMS).	
(g) Navigational aid	
(i) List of beacons	
(ii) Buoys	
(iii) Lighthouses	
(iv) Any other information	
5 Directions	
(a) Entry and berthing information	
(b) Tides (Range of the tides)	
(c) Tidal stream information in the area	
(d) Type of season (max/min temperature, rain fall, wind speed and direction)	
6 Pollution Control	
Local regulation in force (if any)	

7 Tugs	
(a) Number available/Type	
(b) Maximum HP/Bollard Pull	
(c) Requesting authority	
(d) Availability times	
(e) Communication with tugs	
(f) Hiring charges	
8 Berthing and wharves	
(a) Type & number of berths available	
(b) Length	
(c) Depth alongside	
(d) Facilities available	
(e) Procedure for requesting berth and hiring charges.	
9 Cargo Handling	
(a) Containers	
(b) Lighters	
(c) Roll on / Roll off etc.	
10 Cranes	
(a) Brief details max lifting capacity, height of boom at warf level and outreach	
(b) Container handling facilities.	
11 Bridges	
Vertical clearance	
12 Repairs	
(a) Hull machinery and underwater	
(b) Ship and boat yards	
(c) Docking or slipway facilities (size or dimensions of vessels handled)	
(d) Hards and ramps	
(e) Divers/Diving Assistance	
13 Rescue and distress	
(a) Salvage, lifeboats, life guards etc	
14 Supplies	
(a) Fuel (type and quantities available)	
(b) Fresh water and rate of supply	
(c) Provisions	
(d) Chart agents	
15 Services	
(a) Radio/telegram/fax /telephone	
(b) Internet	
(c) Medical	
(d) Quarantine	
(e) counsel	
(f) Ship chandlery and stevedores	
(g) Compass adjustment	
(h) Tank cleaning	
(j) Hull painting	
(k) Police	

(l) Ambulance	
(m) Fire fighting (fixed and mobile facilities)	
(n) Navigational warning and weather bulletin	
(p) garbage disposal	
(q) Waste oil disposal	
(r) Helicopter landing facilities	
16 Communications	
(a) Road, rail and air services available	
(b) Nearest airport or airfield	
(c) Port radio and information service (Frequencies and operating hours)	
17 Port Authority	
Designation, address and phone number	
18 Security	
(a) Security of ports/ International Ship and Port Facility (ISPS) competence	
(b) Container Security Initiative (CSI)	
(c) Custom and Immigration regulation in ports	
19 Small craft facilities	
(a) Information and facilities for small craft yachts visiting the port	
(b) Yacht clubs, berths etc	
20 Shore leave	
21 Clubs recreation	
(a) information kiosk (location)	
(b) Foreign exchange firms/banks (within/near port area)	
(c) Places of interest near port	
(d) Hotels/ restaurants (Type of food served e.g Chinese, continental etc)	
22 Views (duly annotated), photographs of the approaches, leading marks, the entrance to the harbour etc.	
23 Any other information considered to be useful for the mariners	

Filled By
(Name & Designation)

Checked by
(Name & Designation)

Place
Date



FOR 24 X 7 SAR ASSISTANCE IN INDIAN SRR

Email: indsar@vsnl.net

NATION WIDE SAR TELE: 1554 (LAND LINE)

INMARSAT C (IOR) 441907210 CODE: 43 (TOLL FREE)

AFTN: VABBYXYC