



INDIAN NOTICES TO MARINERS



EDITION NO. 21 DATED 01 NOV 2010
(CONTAINS NOTICES 257 TO 267)

REACH US 24 x 7



inho-navy@nic.in
msis-inho-navy@nic.in



+91-135-2748373



National Hydrographic Office
107-A, Rajpur Road
Dehradun – 248001
INDIA



Joint Director of Hydrography
Maritime Safety Information Services
+91- 135 - 2747360-65



www.hydrobharat.nic.in

CONTENTS

<u>Section No.</u>	<u>Title</u>
I	List of Charts Affected
II	Permanent Notices
III	Temporary and Preliminary Notices
IV	Marine Information
V	Radio Navigational Warnings in force
VI	Corrections to Sailing Directions
VII	Corrections to List of Lights
VIII	Corrections to List of Radio Signals
IX	Reporting of Navigational Dangers

(PUBLISHED ON NHO WEBSITE ON 1ST & 16TH OF EVERY MONTH)

FEEDBACK: msis-inho-navy@nic.in



INSIST ON INDIAN CHARTS AND
PUBLICATIONS
Original, Authentic and Up-to-Date



© Govt. of India Copyright

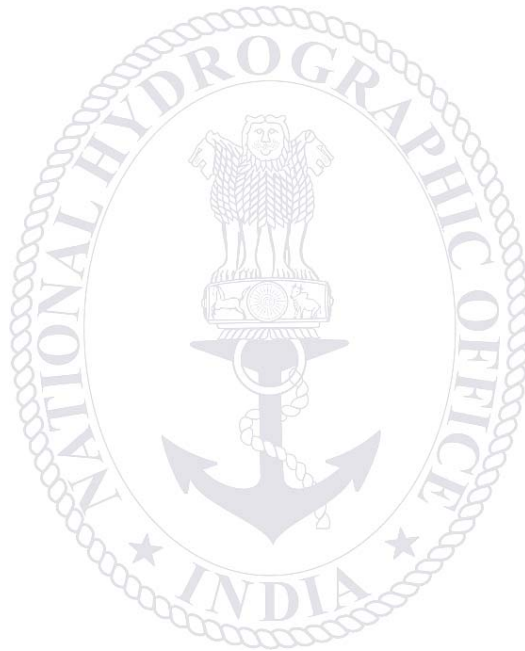
No permission is required to make copies of these Notices. However, such copies are not to be commercially sold.

II

MARINER'S OBLIGATION AND A CHART MAKER'S PLEA

Observing changes at sea proactively and reporting them promptly to the concerned charting agency, is an obligation that all mariners owe to the entire maritime community towards SOLAS. Mariners are requested to notify the Chief Hydrographer to the Government of India at the above mentioned address/fax number/ E mail address immediately on discovering new or suspected dangers to navigation, changes/defects pertaining to navigational aids, and short comings in Indian charts/publications. The Hydrographic Note [Form IH – 102] is a convenient form to notify such changes. Specimen form is attached at Section IX with this notice. Also visit our website for downloading and filling up instructions for Hydrographic Note.

**Chief Hydrographer
to the Government of India**



III

EXPLANATORY NOTES

Corrections to Charts and Publications. Section I comprises List of Charts affected by the notices contained in this edition. Whereas sections II and III contain information for correcting the charts and publications. Mariners should insist on corrected charts from their chart distributors/agents.

- (a) Geographical positions given are in the horizontal datum of the current edition of the chart, unless otherwise stated.
- (b) Bearings are true, reckoned clockwise from 000° to 359°. Bearings to lights are from seaward.
- (c) Symbols referred to, are those shown on the chart INT 1 (5020).
- (d) Alterations to depth contours, deletion of depths to make way for new detail, etc; are not normally mentioned, unless they have some navigational significance.
- (e) Blocks and notes, if any, accompanying the Notices in Sections II and III are placed after Section IX.

Temporary and Preliminary Notices. These are indicated by (T) and (P) respectively after the Notice number and are placed in Section III. SI Nos. of those in force are published quarterly on 01 Jan, 01 Apr, 01 Jul and 01 Oct, and their text is published in Annual Edition of Indian Notices to Mariners. They should be inserted in pencil, by the user, on receipt.

Source of Information. A star preceding the number of a Notice indicates that the notice is promulgated by INHO based on original information received.

Sailing Directions. Corrections for the Sailing Directions (Pilots) are given in Section VI.

Lights. Corrections to Indian list of Lights are given in Section VII, where affected Light List number is quoted.

- (a) These corrections should be incorporated as per instructions given on page XI of the list of Lights.
- (b) Such correction notices to list of lights may be published in either an earlier or a later Edition of N to M than the Edition containing the Notice to the chart correction.
- (c) The range of a light given is its nominal range. Its geographical range is given in parenthesis only if it is less than the nominal range.
- (d) A star indicates that the corresponding field is to be amended and all stars indicate that new light is to be inserted.

Radio Signals. The corrections in Section VIII should be cut and pasted in the appropriate volume of the List of Radio Signals.

Radio Navigational Warnings.

- (a) These are broadcast as serially numbered NAVAREA warnings by the concerned NAVAREA coordinator through GMDSS and Area Radio Broadcasts.
- (b) They contain important information affecting navigational safety, which cannot await the publication of the next edition of N to M.
- (c) It should be borne in mind that they may be based on reports which cannot always be verified before promulgation.
- (d) It is therefore necessary to be selective, and promulgate only the more important warnings to avoid over loading users; the less important information is included in the forthcoming edition of N to M or the Chart/publication concerned.

IV

Laws and Regulations. While in the interest of the safety of shipping, the Hydrographic Office makes every endeavor to include in its publications details of the laws and regulations of all countries pertaining to navigation, it must be clearly understood: -

- (a) That no liability whatsoever can be accepted for failure to publish details of any particular law or regulation and
- (b) That publication of details of a law or regulation is solely for the safety and convenience of shipping and implies no recognition of the International validity of the law or regulation.

Correction of Charts and Publications by the Users. Notices to Mariners contain important information concerning safety of navigation at sea, hence, they should be used to keep the specified charts and publications up-to-date.

Reliance on Charts and Associated Publications. While every effort is made by the Hydrographic Office to ensure the accuracy of the information on Charts and Publications before they are published, it should be appreciated that it may not always be complete and up-to-date. The mariner must be the final judge for the reliance he can place on the information available, bearing in mind his particular circumstances, local pilotage guidance and judicious use of available navigational aids.

Use of Global Positioning System (WGS 84) positions.

- (a) The positions of hydrographic objects shown on most of the Indian charts and publications are in Everest datum. However, the positions of vessels obtained from Global Positioning System (GPS) are on World Geodetic System 1984 datum. There will always exist a difference in the position values obtained by visual fixing (Everest Datum) and GPS position (WGS 84 datum).
- (b) Wherever these differences have been ascertained, their average values are published as a Cautionary Note on the chart concerned, as shifts in Latitude and Longitude. Whilst plotting GPS positions on charts, the shift values as given on the chart must be applied, before making any assessment of the navigational situation vis-à-vis the other charted information.
- (c) These datum shift values are not uniform, particularly in areas off Andaman and Nicobar and Lakshadweep Islands, as these places are not linked to mainland network (Everest datum). Mariners are advised to use alternate source of position information such as Visual or Radar, particularly when closing the shore or navigating in the vicinity of dangers.

Source Data on Charts. All Indian charts contain specific information on their source of hydrographic data. In areas where the source data is very old, incomplete and less reliable, the mariner must use such charts with prudence. Mariner should always use the largest scale charts available for the area. Apart from being the most detailed, the larger scale charts are usually corrected first. Hydrographic information may be sparse on small scale charts. On such charts, a charted shoal may be in error as regards position, least depth and extent. Uncharted dangers may also exist, particularly in areas away from well-established routes. Mariners must exercise due caution.

Further Guidance. The Mariner's Hand Book (NP 100) gives full explanation on the use of charts and the type of information contained on charts. In their own interest, all users of charts should refer to it.

NEWLY PUBLISHED INDIAN CHARTS, ENC'S AND PUBLICATION

1. The new Indian Charts that are available for mariners in the market are as follows:-

<i>Chart No.</i>	<i>Date of Publication</i>	<i>Title, Limits & Description</i>	<i>Scale</i>	<i>Folio</i>	<i>Price</i>
271	31-07-2010	APPROACHES TO GULF OF KACHCHH <u>Limits</u> 21° 12'.00N; 64° 34'.00E. 24° 00'.00N; 69° 10'.00E.	5,00,000	2	Rs. 1527.00
4008	15-09-2010	STEWART SOUND <u>Limits</u> 12° 42'.83N; 92° 52'.00E. 13° 02'.83N; 93° 05'.50E.	37,500	6	Rs. 1527.00

2. The new edition Indian Charts that are available for mariners in the market are as follows:-

<i>Chart No.</i>	<i>Date of Publication</i>	<i>Title, Limits & Description</i>	<i>Scale</i>	<i>Folio</i>	<i>Price</i>
2026	30-09-2010	DAMAN ANHORAGE <u>Limits</u> 20° 21'.40N; 72° 41'.00E. 20° 27'.60N; 72° 50'.52E. REVDANDA PORT <u>Limits</u> 18° 27'.20N; 72° 45'.00E. 18° 35'.85N; 72° 56'.23E.	25,000 30,000	2	Rs. 1527.00

3. The Indian Charts permanently withdrawn are as follows:-

<i>Chart No.</i>	<i>Date of Publication</i>	<i>Title</i>	<i>On Publication of New Chart / Edition</i>	<i>Date of Publication</i>
2026	15-09-2004	DAMAN ANCHORAGE; REVDANDA PORT	2026	30-09-2010
271	31-10-1996	APPROACHES TO GULF OF KACHCHH	271	31-07-2010
4008	31-08-2001	STEWART SOUND	4008	15-09-2010

4. The new Indian Electronic Navigation Chart that is available for mariners in the market is as follows:-

<i>ENC Cell Name</i>	<i>Chart No.</i>	<i>Title</i>	<i>Publication Date</i>
IN2271AG	271	APPROACHES TO GULF OF KACHCHH	31-07-2010

VI

5. The new edition Indian Electronic Navigation Charts that are available for mariners in the market are as follows:-

<i>ENC Cell Name</i>	<i>Chart No.</i>	<i>Title</i>	<i>Publication Date</i>
IN42052M	2052	APPROACHES TO NEW MANGALORE	31-07-2010
IN43011H	3011	HUGLI RIVER; GASPER CHANNEL TO HALDIA	30-04-2010

6. The Indian Electronic Navigation Charts permanently withdrawn are as follows:-

<i>ENC Cell Name</i>	<i>Chart No.</i>	<i>Title</i>	<i>Publication Date</i>
IN42052M	2052	APPROACHES TO NEW MANGALORE	29-02-2002
IN43011H	3011	HUGLI RIVER; GASPER CHANNEL TO HALDIA	30-09-2005
IN3271GK	271	APPROACHES TO GULF OF KACHCHH	31-10-1996

7. The forthcoming Indian Charts are as follows:-

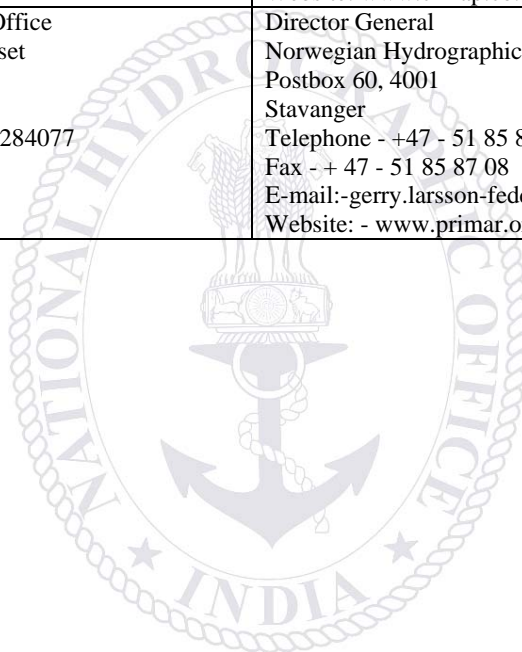
<i>Chart No</i>	<i>Title</i>	<i>Scale</i>	<i>Remarks</i>
313	MAMALLAPURAM (MAHABALIPURAM) TO POINT PUDI	1,50,000	New Edition
2016 (INT 7336)	INNER APPROACHES TO MUMBAI	60,000	New Edition
2103	DIGHI PORT	12,500	New Chart
3007	NAGAPATTINAM ANCHORAGE	30,000	New Edition
2020	MORMUGAO AND PANAJI	25,000	New Edition
2073	APPROACHES TO KUNDAPURA	37,500	New Edition
301	APPROACHES TO HUGLI RIVER	1,50,000	New Edition
41 (INT 757)	ANDAMAN SEA	15,00,000	New Chart
4007	SOUTH BAY AND APPROACHES	27,500	New Edition
4016	APPROACHES TO PORT BLAIR	75,000	New Chart

VII

Availability of ENC's.

The complete folios of Official Indian ENC's are distributed worldwide through JEPPESEN MARINE (formerly C-MAP), UKHO and Norwegian Hydrographic Service. UKHO distributes Indian ENC's through the world wide network of their agents and distributors. Updates are also made available as per the existing policy of the distributor. Mariners and other ENC users may contact the under mentioned for further details:

<p>The Chief Hydrographer to the Government of India National Hydrographic Office 107-A, Rajpur Road Dehradun- 248001 Uttarakhand, India Tele: +91-135- 2747365, Fax: +91-135-2748373 Email: inho-navy@nic.in msis-inho-navy@nic.in sales-inho-navy@nic.in Website: www.hydrobharat.nic.in</p>	<p>Director, JEPPESEN MARINE Jeppesen India Pvt. Ltd. 505, Raheja Arcade, Sector-11, CBD Belapur, Navi Mumbai 400614 India Ph: 91-22- 65103668 Fax: 91- 22- 67939504 Email: info@c-map.co.in Website: www.c-map.co.in</p>
<p>United Kingdom Hydrographic Office Admiralty Way, Taunton, Somerset TA1 2DN, UK Tel: +44 (0) 1823 337900 Fax: +44 (0) 1823 330561, 1823 284077 Telex: 46274 Email: helpdesk@ukho.gov.uk Web site: www.ukho.gov.uk</p>	<p>Director General Norwegian Hydrographic Service, Postbox 60, 4001 Stavanger Telephone - +47 - 51 85 87 00 Fax - + 47 - 51 85 87 08 E-mail:-gerry.larsson-fedde@statkart.no Website: - www.primar.org</p>



SECTION – I

The list of charts affected by the Notices 257 to 267 contained in this edition are as follows:

CHART NUMBER	FOLIO NO.	NOTICE NO.
217	3	258
219	3	259
221	3	266
222	3	262
223	3	262
224	4	261
258 (INT 7348)	3	258
272	4	258
292(INT 7021)	2	257
293(INT 7022)	3	258
402	6	257
403	6	257
2008	3	265
2010	3	265
2021	2	267(P)
2052(INT 7350)	3	258
2053	3	259
2074	3	260
2077	3	260
2079	2	267(P)
7070(INT 70)	1	264
7072(INT 72)	1	264
7704(INT 704)	1	263
8010	1	263

SECTION – II
PERMANENT NOTICES

*257/(21/10) Miscellaneous updates to charts

Source: NHO Dehradun		
Chart	Previous Updates	Details
292 (INT 7021)	203/10	Insert Chart No. 271 and Magenta limit as follows: North: - East: 69° 10'.00E (Existing) South: 21° 12'.00N., West: -
		Delete existing Chart No. 271 and Magenta limit as follows: North: - East: 69° 10'.00E South: 20° 45'.00N., West: -
402	257/09	Insert Chart No. 4008 and Magenta limit as follows: North: 13° 02'.83N., East: 93° 05'.50E. South: - West: 92° 52'.00E.
		Delete existing Chart No. 4008 and Magenta limit as follows: North: 13° 02'.90N., East: 93° 04'.63E. South: - West: 92° 52'.50E.
403	067/09	Insert Chart No. 4008 and Magenta limit as follows: North: 13° 02'.83N., East: 93° 05'.50E. South: 12° 42'.83N., West: 92° 52'.00E.
		Delete existing Chart No. 4008 and Magenta limit as follows: North: 13° 02'.90N., East: 93° 04'.63E. South: 12° 50'.00N., West: 92° 52'.50E.

* 258/(21/10) INDIA – WEST COAST – Port of New Mangalore – Buoy.

Source: DLL Jamnagar

(HJ/1030/25)

Chart 293 (INT 7022) [previous update 173/10]

Move  VQ(9).10s from: 12° 48'.80N., 74° 43'.50E.
to: 12° 48'.87N., 74° 43'.42E.

Chart 272 [previous update 204/10]

Move  VQ(9).10s from: 12° 48'.80N., 74° 43'.50E.
to: 12° 48'.87N., 74° 43'.42E.

Chart 258 (INT 7348) [previous update 204/10]

Move  VQ(9).10s from: 12° 48'.80N., 74° 43'.50E.
to: 12° 48'.87N., 74° 43'.42E.

Chart 217 [previous update 204/10]

Move  VQ(9).10s from: 12° 48'.80N., 74° 43'.50E.
to: 12° 48'.87N., 74° 43'.42E.

Chart 2052 (INT 7350) [previous update NE 31 Jul 10]

Move  VQ(9).10s from: 12° 48'.87N., 74° 43'.45E.
to: 12° 48'.94N., 74° 43'.37E.

***259/(21/10) INDIA – WEST COAST – Sacrifice Rock to Beypore – Legends.**

Source: INS Investigator ROS I(N)-58

(HJ/1030/14)

Chart 219 [previous update 094/10]

Insert legend, 'Ru' along jetty joining: 11° 15'·38N., 75° 46'·05E.
11° 15'·41N., 75° 46'·18E.

Chart 2053 [previous update 094/10]

Insert legend, 'Ru' along jetty joining: 11° 15'·42N., 75° 46'·08E.
11° 15'·45N., 75° 46'·16E.(Shore)
legend, 'Ru' along jetty joining: 11° 14'·87N., 75° 46'·25E.
11° 14'·89N., 75° 46'·35E.(Shore)
Delete legend, 'Landing' centered on: 11° 19'·10N., 75° 45'·00E.

***260/(21/10) INDIA – WEST COAST – Pawas Bay – Ranpar Port – Buoys.**

Source: Ranpar Port

(HJ/1030/66)

Chart 2077 [previous update 065/10]

Delete  *Iso.10s* 16° 52'·42N., 73° 15'·80E.
 *Fl(2).G.8s* 16° 52'·71N., 73° 16'·64E.
 *Fl(2).R.8s* 16° 52'·86N., 73° 16'·51E.
 *Fl.Y.3s* 16° 53'·48N., 73° 17'·70E.
 *Fl.Y.3s* 16° 53'·63N., 73° 17'·45E.

Chart 2074 [previous update 054/10]

Delete  *Iso.10s* 16° 52'·42N., 73° 15'·80E.
 *Fl(2).G.8s* 16° 52'·71N., 73° 16'·64E.
 *Fl(2).R.8s* 16° 52'·86N., 73° 16'·51E.
 *Fl.Y.3s* 16° 53'·48N., 73° 17'·70E.
 *Fl.Y.3s* 16° 53'·63N., 73° 17'·45E.

***261/(21/10) INDIA – EAST COAST – Manappad – Udangudi Port – Port Limit. Legend.**

Source: Tamilnadu Maritime Board

(HJ/930/81)

Chart 224 [previous update NE 31 Aug 10]

Insert port limit, -----, joining: (a) 08° 26'·35N., 78° 04'·75E.
(b) 08° 23'·45N., 78° 09'·48E.
(c) 08° 22'·52N., 78° 08'·95E.
(d) 08° 26'·10N., 78° 04'·55E.
legend, 'Limit of Port of Udangudi' along: (a) - (b) above
(c) - (d) above

***262/(21/10) INDIA – WEST COAST –Vizhinjam – Coastline. Depths. Contours. Light. Conspicuous Object.**

Source: NHO Dehradun

(HJ/930/83)

Chart 222 [previous update 111/10]

Insert the accompanying block showing amendments to depths, contour, lights, coastline and conspicuous objects, centered on: 08° 22′.29N., 76° 58′.33E.

Chart 223 [previous update 083/10]

Insert the accompanying block showing amendments to depths, contour, lights, coastline and conspicuous objects, centered on: 08° 22′.08N., 77° 00′.27E

263/(21/10) RED SEA - Hanish al Kubrá South-south-westwards and Avocet Rock - Depth. Rock.

Source: BA Notice – 5210/10.

(HJ/1030/66)

Chart 8010 [previous update 251/10] WGS84 DATUM

Substitute depth 5 enclosed by 5m contour with seabed type, Co, for depth 4₆ enclosed by 5m contour with seabed type, Co 14° 22′.4N., 42° 41′.9E.

Chart 7704 (INT 704) [previous update 059/10] COMPATIBLE WITH WGS84 DATUM

Substitute depth 5 enclosed by 30m contour for  14° 22′.4N., 42° 41′.9E.

264/(21/10) INDIAN OCEAN - Prince Edward Islands North-north-eastwards - Depth.

Source: BA Notice – 5206/10.

(HJ/1030/66)

Chart 7070 (INT 70) [previous update 125/10] COMPATIBLE WITH WGS84 DATUM

Insert depth 743 enclosed by 1000m, 2000m and 3000m contours 39° 25′.0S., 41° 24′.0E.

Chart 7072 (INT 72) [previous update 125/10] COMPATIBLE WITH WGS84 DATUM


Insert depth 743 enclosed by 1000m, 2000m and 3000m contours 39° 25′.0S., 41° 24′.0E.

***265/(21/10) INDIA – WEST COAST –Karwar Harbour & Approaches – Karwar Naval Harbour – Rock. Buoy.**

Source: Hydrographic Note INS Jamuna

(HJ/1030/45)


Chart 2008 [previous update 118/10]

Insert  14° 46′.735N., 74° 07′.675E.

Delete  CB5 14° 46′.080N., 74° 07′.280E.

Chart 2010 [previous update 118/10]

Insert  14° 46′.735N., 74° 07′.675E.

Delete  CB5 14° 46′.080N., 74° 07′.280E.

1m contour from: 14° 46′.750N., 74° 07′.680E.

to: 14° 46′.720N., 74° 07′.680E.

***266/(21/10) INDIA – WEST COAST –Alleppey – Depths. Source Data Diagram.**

Source: NHO Dehradun

(HJ/930/93)

Chart 221 [previous update 141/10]

Insert the accompanying block showing amendments to depths
and contours, centered on:

09° 29′.30N., 76° 16′.40E.

Substitute 2005 for 92 in Source Data Diagram

09° 18′.20N., 76° 37′.80E



SECTION – III
TEMPORARY AND PRELIMINARY NOTICES

***267(P)/(21/10) INDIA – WEST COAST – Approaches to Mundra Port – Mundra Port – Construction Work. Dredging Work. Anchorage Area. Buoys. Pipe Line. SPM. Pilot Boarding Place.**

Source: Mundra Port.

(HJ/1131/20)

1. West terminal Breakwater is under construction joining following coordinates.
22° 46'·81N., 69° 33'·76E.
22° 45'·21N., 69° 32'·99E.
22° 45'·14N., 69° 33'·03E.
22° 44'·79N., 69° 33'·86E.
22° 44'·66N., 69° 34'·01E.
2. South terminal Breakwater is under construction joining following coordinates.
22° 44'·93N., 69° 40'·08E.
22° 44'·18N., 69° 39'·80E.
22° 43'·74N., 69° 41'·00E.
22° 43'·78N., 69° 41'·37E.
22° 43'·84N., 69° 41'·82E.
22° 43'·92N., 69° 42'·29E.
22° 43'·96N., 69° 42'·29E.
3. Construction/dredging work is in progress with in the west & south terminal breakwater boundaries.
- *4. West Basin buoys are laid in following positions:

Buoy No.	Position	Characteristics	Colour
W1	22° 42'·68N., 69° 33'·45E.	<i>Iso G 4s</i>	Green
W2	22° 42'·83N., 69° 33'·15E.	<i>Iso R 4s</i>	Red
W3	22° 43'·23N., 69° 33'·65E.	<i>Fl G</i>	Green
W4	22° 43'·30N., 69° 33'·47E.	<i>Fl R</i>	Red
W5	22° 43'·93N., 69° 33'·98E.	<i>Oc(2) G 8s</i>	Green
W6	22° 43'·98N., 69° 33'·80E.	<i>Oc(2) R 8s</i>	Red
W7	22° 44'·62N., 69° 34'·33E.	<i>Fl G</i>	Green
W8	22° 44'·75N., 69° 34'·13E.	<i>Fl R</i>	Red
W9	22° 44'·87N., 69° 34'·47E.	<i>Oc(2)G 8s</i>	Green
W11	22° 45'·17N., 69° 34'·37E.	<i>Mo (U)G 10s</i>	Green

- *5. Second SPM is laid in position 22° 40'·89N., 69° 37'·47E. No fishing activity is permitted within the radius of 1.0 NM around SPM.
- *6. Submerged pipeline is laid from second SPM to landfall joining following coordinates:

Location	Position
Pipeline Flange End	22° 40'·93N., 69° 37'·50E.
TP2	22° 42'·32N., 69° 39'·42E.
IP1	22° 42'·75N., 69° 40'·00E.
TP1	22° 43'·42N., 69° 40'·25E.
LFP	22° 45'·12N., 69° 40'·92E.

***267(P)/(21/10) INDIA – WEST COAST – Approaches to Mundra Port – Mundra Port – Construction Work. Dredging Work. Anchorage Area. Buoys. Pipe Line. SPM. Pilot Boarding Place. (continued).**

- *7. Area bounded by following coordinates is marked as West Basin Anchorage:
- 22° 39′.90N., 69° 32′.40E.
 - 22° 39′.00N., 69° 32′.40E.
 - 22° 37′.90N., 69° 36′.05E.
 - 22° 39′.90N., 69° 36′.05E.
- *8. Pilot Boarding Place for West Basin is marked at 22° 41′.00N., 69° 33′.50E.
9. Mariners are advised to exercise caution and contact local port authorities for more information.
- * indicates new entry.

Charts Affected – 2021 – 2079.

Former INM 227(P)/10 is cancelled.



SECTION – IV
MARINE INFORMATION

MUMBAI NAVTEX COAST STATION

MSI Promulgation by Mumbai NAVTEX Coast Station position 19° 05'.00 N, 072° 50'.00 E is closed for maintenance.

(Source - NAVAREA VIII Warning 305/08)

Distribution of Indian Paper Charts and Nautical Publications

Indian Nautical Charts and Publications from National Hydrographic Office, India are now available globally. Details of overseas chart agents are as follows:-

<p>*JEPPESEN MARINE Jeppesen India Pvt. Ltd. 505, Raheja Arcade, Sector-11, CBD Belapur, Navi Mumbai 400 614 Ph: 91 22 65103668 Fax: 91 22 67939504 Email: info@c-map.co.in</p>	<p>*JEPPESEN MARINE Jeppesen Norway AS P.O. 212, N-4379, Egersund, Norway Ph: 0047 51 464700 Fax: 0047 51 464701 Email: info@c-map.no Site: www.c-map.no</p>	<p>C-Map US Commercial 133 Falmouth Road, Building 2, Postal Code: 02649, Mashpee, MA, America Ph: +1 (508) 477 8010 Fax: +1 (508) 539 4381 Email: info@c-map.com</p>
<p>C-Map (UK) Ltd. Systems House Delta Business Park Salterns Lane, Fareham, PO16 0QS, United Kingdom, Ph: +44 (0) 1329 517777 Fax: +44 (0) 1329 517778 Email: info@c-map.co.uk</p>	<p>Mari-Sys Pte Ltd. 20 Ayer Rajah Crescent, 08-21, SE 139964, Republic of Singapore Ph: +65 6776 1898 Email: info@mari-sys.com</p>	<p>Bogerd Martin NV, Oude Leeuwenrui 37 2000 Antwerp, Belgium Ph: +32 (3) 2134170 Fax: +32 (3) 2326167 Email: sales@martin.be Site: www.martin.be</p>
<p>Bogerd Martin Tianjin(China Branch) 2-B101 FTZ Hi-Tech Development Centre 131 Haibin 9 Road 300461 Tianjin China Ph: +86 22 257 62 721 Fax: +86 22 257 62 722 Email: charts-tj@martincn.com</p>	<p>C-Map Holland Paleiskade100 PO Box 7 1781 AR Den Helder, Holland Ph: +31 223 616 700 E Mail: CorMallie@chartworx.nl</p>	
<p>* Indicates C Map Norway AS has changed name to Jeppesen Marine Norway AS. Indicates C Map India has changed name to Jeppesen India.</p>		

List of Indian Chart Agents.

M/s OSA Books and Periodicals, R-246, Greater Kailash -I New Delhi - 110 048 Tel/Fax: 011-46557337, Mob: 9910891631, 9810705062 Email: ravipani@indiatimes.com	M/s Sterling Book House, 181, Dr. DN Road Fort, Mumbai – 400 001 Tel: 91-22-22612521, Fax: 91-22-22623551 Email : sbh@vsnl.com
M/s Global Charts & Nav. Aids Pvt. Limited 1A, Goa Mansion, Ground Floor 58, Dr. Sunderlal Bahl Path (Goa Street) Fort, Mumbai - 400 001 Tel: 91-22-22626318, 22626380, Fax: 91-22-22621488 Email: sales@bogerdmartin.com, sarmarin@vsnl.com	M/s EW Stevens & Co. (Pvt.) Ltd. Mackinnon Mackenzie Bldg, Ground Floor, 4 Shoorji Vallabhdas Marg, Mumbai-400 038 Tel: 91-22-22618567, Fax: 022-22619146 Email: ewsbom@bom3.vsnl.net.in
M/s C & C Marine Combine 25 Bank Street, 1 st Floor, Mumbai - 400 023 Tel: 91-22- 22660525, 22661937, 22672143 Fax: 91-22-22670896 Email: ccmarine@bom5.vsnl.net.in	M/s Maritime Charts and Publications New No. 221, Old No. 107, Unit No. F9, Hotel Chennai Palace, Angappa Naicken Street Chennai – 600001, Telefax : 044-42165008 Email: maritimeindia@airtelmail.in
M/s SVR Chart Agencies Door No.50-81-35/6, Santhipuram, Seetammapeta, Visakhapatnam-530 016 Tele Fax: 0891-2799471, Cell: 9440132553, 9849120988, 9885308200 Email : mahalakshmitravels@hotmail.com	M/s Jeppesen India Pvt. Ltd 505, Raheja Arcade, Sector 11 CBD, Belapur Navi Mumbai – 400 614 Tel: +91 22 5610 3668, Fax: +91 22 55939504 Mob: +9322238542 Email: raj_chakravorty@yahoo.com, info@c-map.co.in Website: www.c-map.co.in
M/s JM Maritime Services 24/24C Kavarana Building Ground Floor, Wadi Bunder P.D. Mellow Road, Mumbai – 400 009 Tel: +91 22 23736956/6907, Fax: 022 - 23725083 Cell: +91 9820788357 Email : jmms@mtnl.net.in, charts@ mtnl.net.in	M/S Inspire Shipping, 46a, Ashok Chamber, Broach Street, Masjid Bunder (E), Mumbai – 400 009 Fax : 022 – 27713146 Email : info@inspireship.com, pramod@inspireship.com
M/S Lift-O-Marine 20 Bhut Ghat Street (Near No. 3 N. S. Dock) Kolkata – 700043 Tel: +91-33-2439 5731/ 2482, Cell: +91-9331936587, 9830056801 Fax: +91-33-2439 2102, Email: liftomarine@yahoo.co.in	M/s Global Marine Infratech Pvt. Ltd. Siksha Sandan, Ground Floor, ND-7, VIP Area, IRC Village Bhubaneswar – 751015 Tel: +91-674-2550599, Fax: +91-674-2551899 Email: ashiskantha@gmiindia.in; Web: www.gmiindia.in

SECTION – V
NAVAREA - VIII WARNINGS IN FORCE

1. For details of NAVAREA limits and organisation/coordination, please refer to Notice No. 12 of the Special edition of Indian Notice to Mariners – 2008.

2. Navarea VIII Warnings Inforce as on 31 Oct 10.

2010 SERIES - 252 297 303 314 315 352 379 380 389 396 399 440 441 442 449 457 461
466 470 471 474 485 503 508 516 520 526 528 534 536 546 547 554 559 560 564 565
569 571 576 580 581 582 583 587 591 593 594 595 596 599 600 601 604 605 608 610
611 612 613 614 615 616 617 618 619 620 621 622 623 624 625 626

3. NAVAREA VIII Warnings issued during the period from 16 Oct 10 to 31 Oct 10 (both dates inclusive) are as tabulated below:-

<p>586. India East Coast- Chennai. Charts 32 33 313 356 357 3001 3004 INT 706. Firing practice by naval coast battery from position 13-07.17N 080-18.70E between 0530 UTC to 0730 UTC on 22 Oct 2010.</p> <p>2. Danger zone sector of 11 NM radius between 045 degree and 075 degree from gun position.</p> <p>3. Safe flying height 12800 metres.</p> <p>4. Cancel this message on 23 Oct 2010.</p>														
<p>587. India East Coast- Bay of Bengal. Charts 31 32 INT 706. Survey vessel Bos Artic will carry out 3 D seismic survey operations from 19 Oct to 19 Nov 2010 in area bounded by:</p> <table style="width: 100%; border: none;"> <tr> <td style="width: 50%;">(a) 17-39.00N 085-28.00E</td> <td style="width: 50%;">(b) 17-39.00N 085-56.00E</td> </tr> <tr> <td>(c) 16-59.00N 085-56.00E</td> <td>(d) 16-59.00N 085-28.00E</td> </tr> </table> <p>2. The vessel will be towing 06 streamer cables of length 8100 metres. Each end is marked with yellow coloured tail buoy with flashing white light.</p> <p>3. All vessels operating in area to exercise caution and give wide berth at least 07 NM around the vessel.</p> <p>4. Cancel this message on 20 Nov 2010.</p>	(a) 17-39.00N 085-28.00E	(b) 17-39.00N 085-56.00E	(c) 16-59.00N 085-56.00E	(d) 16-59.00N 085-28.00E										
(a) 17-39.00N 085-28.00E	(b) 17-39.00N 085-56.00E													
(c) 16-59.00N 085-56.00E	(d) 16-59.00N 085-28.00E													
<p>588. Self Cancelling. Cancel NAVAREA VIII message 574 of 2010.</p>														
<p>589. Self Cancelling. Piracy. Indian Ocean - Western Part. Charts INT 71 INT 702 INT 704 INT 705. Mothership activity in position 11-39.00N 063-02.00E on 17 Oct 2010 at 2030 UTC.</p> <p>2. Mariners to exercise caution.</p>														
<p>590. Self Cancelling. Cancel NAVAREA VIII messages 499 and 500 of 2010 issued by INM 20 of 2010.</p>														
<p>591. India West Coast - Kochi. Charts 22 32 220 259 260 2004 2029 2045 INT 706. Firing by naval coast battery on following dates:</p> <table style="width: 100%; border: none;"> <tr> <td style="width: 50%;">Date</td> <td style="width: 50%;">Time (UTC)</td> </tr> <tr> <td>26 Oct 2010</td> <td>0900 to 1200</td> </tr> <tr> <td>29 Oct 2010</td> <td>0900 to 1200 and 1230 to 1430</td> </tr> </table> <p>2. Danger area bounded by:</p> <table style="width: 100%; border: none;"> <tr> <td style="width: 25%;">(a) 09-57.50N</td> <td style="width: 25%;">075-59.50E</td> <td style="width: 25%;">(b) 09-57.70N</td> <td style="width: 25%;">076-14.20E</td> </tr> <tr> <td>(c) 09-44.00N</td> <td>076-17.50E</td> <td>(d) 09-42.50N</td> <td>076-09.50E</td> </tr> </table> <p>3. Safe flying height 10000 metres.</p> <p>4. Cancel this message on 30 oct 2010.</p>	Date	Time (UTC)	26 Oct 2010	0900 to 1200	29 Oct 2010	0900 to 1200 and 1230 to 1430	(a) 09-57.50N	075-59.50E	(b) 09-57.70N	076-14.20E	(c) 09-44.00N	076-17.50E	(d) 09-42.50N	076-09.50E
Date	Time (UTC)													
26 Oct 2010	0900 to 1200													
29 Oct 2010	0900 to 1200 and 1230 to 1430													
(a) 09-57.50N	075-59.50E	(b) 09-57.70N	076-14.20E											
(c) 09-44.00N	076-17.50E	(d) 09-42.50N	076-09.50E											
<p>592. India West Coast- Arabian Sea. Charts 22 INT 705 INT 706. Firing will be carried out by naval ships from 0030 UTC to 0630 UTC on 23 and 27 Oct 2010. Danger area bounded by:</p> <table style="width: 100%; border: none;"> <tr> <td style="width: 25%;">(a) 17-40.00N</td> <td style="width: 25%;">071-35.00E</td> <td style="width: 25%;">(b) 17-40.0N</td> <td style="width: 25%;">072-35.00E</td> </tr> <tr> <td>(c) 16-30.00N</td> <td>072-35.00E</td> <td>(d) 16-30.0N</td> <td>071-35.00E</td> </tr> </table> <p>2. Safe flying height 25000 metres.</p> <p>3. Cancel this message on 28 Oct 2010.</p>	(a) 17-40.00N	071-35.00E	(b) 17-40.0N	072-35.00E	(c) 16-30.00N	072-35.00E	(d) 16-30.0N	071-35.00E						
(a) 17-40.00N	071-35.00E	(b) 17-40.0N	072-35.00E											
(c) 16-30.00N	072-35.00E	(d) 16-30.0N	071-35.00E											
<p>593. Refer Navarea VIII message 547 of 2010. India West Coast- Arabian Sea. Charts 21 INT 705 INT 706. Following rigs moved to new positions:</p> <table style="width: 100%; border: none;"> <tr> <td style="width: 30%;">(a) Aban III</td> <td style="width: 30%;">19-33.33N</td> <td style="width: 40%;">071-18.41E</td> </tr> <tr> <td>(b) Aban IV</td> <td>19-36.61N</td> <td>071-22.90E</td> </tr> <tr> <td>(c) Noble George Mcleod</td> <td>20-40.05N</td> <td>072-13.03E</td> </tr> </table> <p>2. Wide berth requested.</p>	(a) Aban III	19-33.33N	071-18.41E	(b) Aban IV	19-36.61N	071-22.90E	(c) Noble George Mcleod	20-40.05N	072-13.03E					
(a) Aban III	19-33.33N	071-18.41E												
(b) Aban IV	19-36.61N	071-22.90E												
(c) Noble George Mcleod	20-40.05N	072-13.03E												
<p>594. India West Coast – Gulf of Kachchh. Charts 202 203 251 271 291 2031 2068 INT 705. Salaya channel marking buoy Gurur is missing from position 22-35.40N 068-58.03E.</p>														
<p>595. Refer Navarea VIII message 547 of 2010. India West Coast – Arabian Sea. Charts 21 292 INT 705. Rig Aban II demobilised and anchored in position 18-53.00N 072-51.70E.</p>														

<p>596. India West Coast – Arabian Sea. Charts 21 292 INT 705 INT 706. Hydrographic survey of safety fairways – North of Mumbai will be carried out by hydrographic survey vessel from 21 Oct to 31 Oct 2010 in area bounded by:</p> <table border="0"> <tr> <td>(a)</td> <td>20-02.00N</td> <td>072-05.00E</td> <td>(b)</td> <td>20-10.43N</td> <td>071-38.32E</td> </tr> <tr> <td>(c)</td> <td>20-27.90N</td> <td>071-38.31E</td> <td>(d)</td> <td>20-28.08N</td> <td>071-35.45E</td> </tr> <tr> <td>(e)</td> <td>20-10.88N</td> <td>071-35.45E</td> <td>(f)</td> <td>20-08.30N</td> <td>071-35.98E</td> </tr> <tr> <td>(g)</td> <td>19-59.00N</td> <td>072-05.00E</td> <td></td> <td></td> <td></td> </tr> </table> <p>2. Mariners to exercise caution and give wide berth. 3. Cancel this message on 01 Nov 2010.</p>	(a)	20-02.00N	072-05.00E	(b)	20-10.43N	071-38.32E	(c)	20-27.90N	071-38.31E	(d)	20-28.08N	071-35.45E	(e)	20-10.88N	071-35.45E	(f)	20-08.30N	071-35.98E	(g)	19-59.00N	072-05.00E			
(a)	20-02.00N	072-05.00E	(b)	20-10.43N	071-38.32E																			
(c)	20-27.90N	071-38.31E	(d)	20-28.08N	071-35.45E																			
(e)	20-10.88N	071-35.45E	(f)	20-08.30N	071-35.98E																			
(g)	19-59.00N	072-05.00E																						
<p>597. Self Cancelling. Piracy. Indian Ocean – Western Part. Charts INT 71 INT 702 INT 704 INT 705. Mothership activity in position 02-00.00S 045-00.00E on 19 Oct 2010. 2. Mariners to exercise extreme caution.</p>																								
<p>598. Self Cancelling. Piracy. Indian Ocean – Western Part. Charts INT 71 INT 702 INT 704 INT 705. M/V attacked in position 02-02.00N 050-13.00E on 19 Oct 2010 at 1857 UTC. 2. Mariners to exercise extreme caution.</p>																								
<p>599. India East Coast - Bay of Bengal. Charts 32 33 356 INT 706. Firing will be conducted from 25 Oct to 04 Nov 2010 between 0230 UTC to 1130 UTC. 2. Danger zone is 05 NM around the position 13-50.00N 081-40.00E. 3. Safe flying height 3100 metres. 4. Cancel this message on 05 Nov 2010.</p>																								
<p>600. India West Coast – Arabian Sea. Charts 21 292 INT 705. Survey vessel Bos Angler will carry out seismic survey from 22 Oct to 10 Dec 2010 in area bounded by:</p> <table border="0"> <tr> <td>(a)</td> <td>20-23.00N</td> <td>070-50.00E</td> <td>(b)</td> <td>20-23.00N</td> <td>071-40.00E</td> </tr> <tr> <td>(c)</td> <td>20-32.00N</td> <td>071-50.00E</td> <td>(d)</td> <td>20-45.00N</td> <td>071-40.00E</td> </tr> <tr> <td>(e)</td> <td>20-45.00N</td> <td>071-20.00E</td> <td></td> <td></td> <td></td> </tr> </table> <p>2. The vessel will be towing four streamers of length 6000 metres. Each trailing end attached to tail buoy with radar reflectors and flashing white lights. 3. All vessels operating in vicinity to give a wide berth of 01 NM on either side, 02 NM ahead and 05 NM astern of the vessel and exercise caution. 4. Cancel this message on 11 Dec 2010.</p>	(a)	20-23.00N	070-50.00E	(b)	20-23.00N	071-40.00E	(c)	20-32.00N	071-50.00E	(d)	20-45.00N	071-40.00E	(e)	20-45.00N	071-20.00E									
(a)	20-23.00N	070-50.00E	(b)	20-23.00N	071-40.00E																			
(c)	20-32.00N	071-50.00E	(d)	20-45.00N	071-40.00E																			
(e)	20-45.00N	071-20.00E																						
<p>601. India West Coast – Arabian Sea. Charts 21 292 INT 705. Rig Kedarnath is carrying out drilling operations in position 20-48.20N 072-38.69E. 2. All vessels operating in the area to give wide berth and exercise caution.</p>																								
<p>602. Self Cancelling. Indian Ocean–Western Part. Charts INT 70 INT 71 INT 72 INT 701. Piracy. M/V attacked in position 09-45.00S 039-56.00E at 0622 UTC on 21 Oct 2010. 2. Mariners to exercise caution.</p>																								
<p>603. Arabian Sea – Somalia North East Coast. Charts 7071 7702 7703. Possible mother ship activity in position 07-17.00N 050-01.00E. 2. Vessels are advised to keep 100 miles clear of this position and exercise extreme caution. Reports to UKMTO Dubai telephone 97 150 552 3215 e mail ukmto at eim.ae.</p>																								
<p>604. Refer NAVAREA VIII message 546 of 2010. India East Coast- Bay of Bengal. Charts 31 352 INT 71 INT 706. Rig Discoverer Seven Seas moved to new position 19-42.27N 086-34.87E. 2. Wide berth requested.</p>																								
<p>605. Andaman Sea - Gulf of Martaban. Charts 41 411 452 INT 71 INT 706. Survey vessel MV Genesis (call sign V3ZU4) will carry out geophysical site survey from 25 Oct to 10 Nov 2010 in area bounded by:</p> <table border="0"> <tr> <td>(a)</td> <td>16-16.01N</td> <td>096-19.79E</td> <td>(b)</td> <td>16-15.62N</td> <td>096-44.04E</td> </tr> <tr> <td>(c)</td> <td>16-04.51N</td> <td>096-43.86E</td> <td>(d)</td> <td>16-04.89N</td> <td>096-19.58E</td> </tr> </table> <p>2. During the survey period unauthorized navigation, anchoring, fishing and trawling are prohibited within a distance of 4000 metres from the above mentioned area. 3. Cancel this message on 11 Nov 2010.</p>	(a)	16-16.01N	096-19.79E	(b)	16-15.62N	096-44.04E	(c)	16-04.51N	096-43.86E	(d)	16-04.89N	096-19.58E												
(a)	16-16.01N	096-19.79E	(b)	16-15.62N	096-44.04E																			
(c)	16-04.51N	096-43.86E	(d)	16-04.89N	096-19.58E																			
<p>606. Self Cancelling. NAVAREA VIII-warning inforce: 252 297 303 314 315 352 379 380 389 396 399 440 441 442 449 457 461 466 470 471 474 485 503 508 516 520 526 528 534 536 546 547 554 559 560 564 565 569 571 575 576 580 581 582 583 586 587 591 592 593 594 595 596 597 598 599 600 601 602 603 604 605 of 2010.</p>																								
<p>607. Self Cancelling. Piracy. Indian Ocean – Western Part. Charts INT 71 INT 72 INT 702. M/V attacked in position 03-29.00N 059-35.00E at 0542 UTC on 24 Oct 2010. 2. All vessels are advised to keep 100 miles clear of this position and exercise extreme caution.</p>																								
<p>608. India West Coast – Mormugao. Chart 22 257 INT 705 INT 706. Firing practice by naval aircraft between 0230 UTC to 1230 UTC from 01 to 07 Nov 2010. Danger area bounded by:</p> <table border="0"> <tr> <td>(a)</td> <td>15-13.00N</td> <td>073-57.00E</td> <td>(b)</td> <td>15-13.00N</td> <td>073-52.00E</td> </tr> <tr> <td>(c)</td> <td>15-11.00N</td> <td>073-52.00E</td> <td>(d)</td> <td>15-11.00N</td> <td>073-57.00E</td> </tr> </table> <p>2. Safe flying height 3500 metres. 3. Cancel this message on 08 Nov 2010.</p>	(a)	15-13.00N	073-57.00E	(b)	15-13.00N	073-52.00E	(c)	15-11.00N	073-52.00E	(d)	15-11.00N	073-57.00E												
(a)	15-13.00N	073-57.00E	(b)	15-13.00N	073-52.00E																			
(c)	15-11.00N	073-52.00E	(d)	15-11.00N	073-57.00E																			

<p>609. Self Cancelling. Piracy. Indian Ocean – Western part. Charts INT 71 INT 72 INT 73 INT 705. Mothership activity in position 16-46.00N 062-20.00E on 25 Oct 2010 at 1544 UTC.</p> <p>2. Mariners to exercise extreme caution.</p>																				
<p>610. India West Coast- Arabian Sea. Charts 21 22 293 INT 705. Firing will be carried out by naval ships from 0130 UTC to 0530 UTC on 03 Nov 2010. Danger area bounded by:</p> <table> <tr> <td>(a) 17-31.00N</td> <td>071-09.00E</td> <td>(b) 18-10.00N</td> <td>071-09.00E</td> </tr> <tr> <td>(c) 18-10.00N</td> <td>071-52.00E</td> <td>(d) 17-31.00N</td> <td>071-52.00E</td> </tr> </table> <p>2. Safe flying height 8000 metres.</p> <p>3. Cancel this message on 04 Nov 2010.</p>	(a) 17-31.00N	071-09.00E	(b) 18-10.00N	071-09.00E	(c) 18-10.00N	071-52.00E	(d) 17-31.00N	071-52.00E												
(a) 17-31.00N	071-09.00E	(b) 18-10.00N	071-09.00E																	
(c) 18-10.00N	071-52.00E	(d) 17-31.00N	071-52.00E																	
<p>611. India West Coast- Arabian Sea. Charts 21 22 293 INT 705. Firing will be carried out by naval ships on 02 Nov 2010 from 0230 UTC to 0830 UTC in area bounded by:</p> <table> <tr> <td>(a) 18-00.00N</td> <td>070-45.00E</td> <td>(b) 18-00.00N</td> <td>072-15.00E</td> </tr> <tr> <td>(c) 17-00.00N</td> <td>072-40.00E</td> <td>(d) 15-40.00N</td> <td>072-40.00E</td> </tr> <tr> <td>(e) 15-40.00N</td> <td>071-00.00E</td> <td>(f) 16-10.00N</td> <td>070-45.00E</td> </tr> </table> <p>and from 0630 UTC to 1730 UTC in area bounded by:</p> <table> <tr> <td>(a) 17-25.00N</td> <td>070-45.00E</td> <td>(b) 17-25.00N</td> <td>072-20.00E</td> </tr> <tr> <td>(c) 16-10.00N</td> <td>072-20.00E</td> <td>(d) 16-10.00N</td> <td>070-45.00E</td> </tr> </table> <p>2. safe flying height 10000 metres.</p> <p>3. cancel this message on 03 nov 2010.</p>	(a) 18-00.00N	070-45.00E	(b) 18-00.00N	072-15.00E	(c) 17-00.00N	072-40.00E	(d) 15-40.00N	072-40.00E	(e) 15-40.00N	071-00.00E	(f) 16-10.00N	070-45.00E	(a) 17-25.00N	070-45.00E	(b) 17-25.00N	072-20.00E	(c) 16-10.00N	072-20.00E	(d) 16-10.00N	070-45.00E
(a) 18-00.00N	070-45.00E	(b) 18-00.00N	072-15.00E																	
(c) 17-00.00N	072-40.00E	(d) 15-40.00N	072-40.00E																	
(e) 15-40.00N	071-00.00E	(f) 16-10.00N	070-45.00E																	
(a) 17-25.00N	070-45.00E	(b) 17-25.00N	072-20.00E																	
(c) 16-10.00N	072-20.00E	(d) 16-10.00N	070-45.00E																	
<p>612. India West Coast - Kochi. Charts 22 32 220 259 260 2004 2029 2045 INT 706. firing by naval coast battery on following dates:</p> <table> <thead> <tr> <th>Date</th> <th>Time (UTC)</th> </tr> </thead> <tbody> <tr> <td>02 Nov 2010</td> <td>0900 to 1200</td> </tr> <tr> <td>05 Nov 2010</td> <td>0900 to 1200 and 1230 to 1430</td> </tr> </tbody> </table> <p>2. Danger area bounded by:</p> <table> <tr> <td>(a) 09-57.50N</td> <td>075-59.50E</td> <td>(b) 09-57.70N</td> <td>076-14.20E</td> </tr> <tr> <td>(c) 09-44.00N</td> <td>076-17.50E</td> <td>(d) 09-42.50N</td> <td>076-09.50E</td> </tr> </table> <p>3. Safe flying height 10000 metres.</p> <p>4. cancel this message on 06 Nov 2010.</p>	Date	Time (UTC)	02 Nov 2010	0900 to 1200	05 Nov 2010	0900 to 1200 and 1230 to 1430	(a) 09-57.50N	075-59.50E	(b) 09-57.70N	076-14.20E	(c) 09-44.00N	076-17.50E	(d) 09-42.50N	076-09.50E						
Date	Time (UTC)																			
02 Nov 2010	0900 to 1200																			
05 Nov 2010	0900 to 1200 and 1230 to 1430																			
(a) 09-57.50N	075-59.50E	(b) 09-57.70N	076-14.20E																	
(c) 09-44.00N	076-17.50E	(d) 09-42.50N	076-09.50E																	
<p>613. India West Coast – Off Mumbai. Charts 21 292 INT 705. Soil sampling survey will be carried out by survey vessel volans from 27 Oct to 21 Nov 2010 in area bounded by:</p> <table> <tr> <td>(a) 18-39.38N</td> <td>072-35.83E</td> <td>(b) 18-35.50N</td> <td>072-21.06E</td> </tr> <tr> <td>(c) 18-28.50N</td> <td>072-24.50E</td> <td>(d) 18-27.20N</td> <td>072-27.25E</td> </tr> <tr> <td>(e) 18-22.00N</td> <td>072-32.50E</td> <td>(f) 18-22.00N</td> <td>072-41.00E</td> </tr> <tr> <td>(g) 18-27.00N</td> <td>072-41.00E</td> <td>(h) 18-39.38N</td> <td>072-36.86E</td> </tr> </table> <p>3. All vessels operating in vicinity to exercise caution and give wide berth of 01 NM all around the vessel.</p> <p>4. Cancel this message on 22 Nov 2010.</p>	(a) 18-39.38N	072-35.83E	(b) 18-35.50N	072-21.06E	(c) 18-28.50N	072-24.50E	(d) 18-27.20N	072-27.25E	(e) 18-22.00N	072-32.50E	(f) 18-22.00N	072-41.00E	(g) 18-27.00N	072-41.00E	(h) 18-39.38N	072-36.86E				
(a) 18-39.38N	072-35.83E	(b) 18-35.50N	072-21.06E																	
(c) 18-28.50N	072-24.50E	(d) 18-27.20N	072-27.25E																	
(e) 18-22.00N	072-32.50E	(f) 18-22.00N	072-41.00E																	
(g) 18-27.00N	072-41.00E	(h) 18-39.38N	072-36.86E																	
<p>614. Self Cancelling. Piracy. Indian Ocean – Western Part. Charts INT 70 INT 71 INT 72 INT 701. M/V attacked in position 09-26.00S 041-22.00E on 26 Oct 2010 at 1515 UTC.</p> <p>2. All vessels are advised to keep 100 miles clear of this position and exercise extreme caution.</p>																				
<p>615. India West Coast- Arabian Sea. Charts 21 293 INT 705. Firing will be carried out by naval ships on 03 Nov 2010 from 0830 UTC to 1430 UTC and on 04 Nov 2010 from 0030 UTC to 0630 UTC in area bounded by:</p> <table> <tr> <td>(a) 16-30.00N</td> <td>070-50.50E</td> <td>(b) 16-06.00N</td> <td>071-34.50E</td> </tr> <tr> <td>(c) 15-08.00N</td> <td>070-55.00E</td> <td>(d) 15-40.00N</td> <td>070-02.00E</td> </tr> </table> <p>2. Safe flying height 22000 metres.</p> <p>3. Cancel this message on 05 Nov 2010.</p>	(a) 16-30.00N	070-50.50E	(b) 16-06.00N	071-34.50E	(c) 15-08.00N	070-55.00E	(d) 15-40.00N	070-02.00E												
(a) 16-30.00N	070-50.50E	(b) 16-06.00N	071-34.50E																	
(c) 15-08.00N	070-55.00E	(d) 15-40.00N	070-02.00E																	
<p>616. India West Coast - Trivandrum. Charts 22 32 222 260 INT 706. RH 200 rocket launch from Thumba equatorial rocket launching station 08-31.98N 076-52.05E between 1230 UTC to 1430 UTC on 29 Oct 2010.</p> <p>2. Danger zones:</p> <table> <tr> <td>(a)</td> <td>Sector of radius 05 NM from launcher between azimuth</td> <td>angles 190 degree and 300 degree.</td> </tr> <tr> <td>(b)</td> <td>Sector of radii 45 NM and 75 NM from the launcher</td> <td>between azimuth angles 220 degree and 260 degree.</td> </tr> </table> <p>3. Cancel this message on 30 Oct 2010.</p>	(a)	Sector of radius 05 NM from launcher between azimuth	angles 190 degree and 300 degree.	(b)	Sector of radii 45 NM and 75 NM from the launcher	between azimuth angles 220 degree and 260 degree.														
(a)	Sector of radius 05 NM from launcher between azimuth	angles 190 degree and 300 degree.																		
(b)	Sector of radii 45 NM and 75 NM from the launcher	between azimuth angles 220 degree and 260 degree.																		
<p>617. Self Cancelling. India West Coast - Arabian Sea. Piracy. Charts INT 71 INT 73 INT 703 INT 705. M/V attacked in position 13-15.00N 068-59.00E on 27 Oct 2010 at 1955 UTC.</p> <p>2. All vessels are advised to keep 100 miles clear of this position and exercise extreme caution.</p>																				

<p>618. India East Coast- Andaman Sea. Charts 41 471 INT 71 INT 73 INT 706 INT 707. Seismic survey will be carried out by R/V Hakuhou Maru from 30 Oct to 08 Nov 2010. Vessel will be towing 1400 metres long cable and will do lines between:</p> <p>(a) 05-03.50N 093-57.00E and 04-33.50N 093-13.00E (b) 04-25.00N 093-15.00E and 04-59.00N 094-03.00E (c) 04-53.50N 094-06.00E and 04-19.50N 093-17.50E (d) 03-56.50N 093-29.00E and 04-24.00N 094-11.00E (e) 04-14.50N 094-12.50E and 03-52.00N 093-35.00E (f) 03-45.00N 093-37.50E and 04-06.30N 094-16.70E</p> <p>2. Cancel this message on 09 Nov 2010.</p>
<p>619. Refer Navarea VIII message 547 of 2010. India West Coast- Off Mumbai. Charts 21 292 INT 705. Rig Badrinath demobilized from position 18-31.98N 072-00.91E.</p>
<p>620. India West Coast – Okha. Charts 21 202 203 251 271 291 2013 2068 INT 705. Seaward firing practice by naval coast battery on 04 Nov 2010 from 1030 UTC to 1230 UTC.</p> <p>2. Danger area from 300 degree to 020 degree up to 12 NM seaward from 22-28.7N 069-04.0E.</p> <p>3. Safe flying height 13000 metres.</p> <p>4. Cancel this message on 05 Nov 2010.</p>
<p>621. India East Coast – Bay of Bengal. Charts 33 INT 71 INT 73 INT 706 INT 707. M/Y Paradise in distress with 09 crew in position 05-59.20N 088-39.90E due to electrical power failure on 26 Oct 2010 at 0530 UTC.</p> <p>2. All vessels transiting through area to keep sharp lookout and render assistance under intimation to MRCC Port Blair on telephone 00 3192-242948, e-mail pblmrcpcb at sancharnet.in</p>
<p>622. Self Cancelling. Indian Ocean – Denis Island. Piracy. Charts INT 70 INT 71 INT 72 INT 702 INT 703. Two F/V reported hijacked in position 03-48.00S 055-40.00E on 28 Oct 2010 at 2011 UTC.</p> <p>2. All vessels transiting through the area are advised to exercise extreme caution.</p>
<p>623. Self Cancelling. India West Coast – Western Part. Piracy. Charts INT 70 INT 71 INT 72 INT 701. M/V attacked in 04-10.00S 039-56.00E on 28 Oct 2010 at 2201 UTC</p> <p>2. All vessels transiting through the area are advised to exercise extreme caution.</p>
<p>624. Self Cancelling. India West Coast - Arabian Sea. Piracy. Charts INT 71 INT 72 INT 703 INT 705. Cargo S/V reported hijacked. Last known position 12-08.00N 054-25E on 28 Oct 2010 at 1156 UTC.</p> <p>2. All vessels are advised to exercise extreme caution.</p>
<p>625. Self Cancelling. Cancel NAVAREA VIII message 603 of 2010. Promulgated sufficiently.</p>
<p>626. Self Cancelling. NAVAREA VIII-warning inforce:</p> <p>252 297 303 314 315 352 379 380 389 396 399 440 441 442 449 457 461 466 470 471 474 485 503 508 516 520 526 528 534 536 546 547 554 559 560 564 565 569 571 576 580 581 582 583 587 591 593 594 595 596 599 600 601 604 605 608 610 611 612 613 614 615 616 617 618 619 620 621 622 623 624 625 of 2010.</p>

SECTION – VI
CORRECTIONS TO SAILING DIRECTIONS (PILOTS)

- NIL -

SECTION – VII
CORRECTIONS TO LIST OF LIGHTS

No	Name & Location	Position (Lat-Long)	Characteristics	Ht. mts	Range miles	Structure & Height (mts)	Remarks
K1134.8	-Tanjung Emas. W Breakwater. S elbow (ID)	06 56.09N 110 25.12E	Fl Y 6s	..	4		
*	*	*	*	*	*	*	*



SECTION – VIII
CORRECTION TO LIST OF RADIO SIGNALS

INP 31(1), 2005

(Last correction: Edition No. 07 dated 01 Apr 2009)

NIL

INP 31(2), 2007

(Last correction: Edition No. 04 dated 16 Feb 10)

NIL

INP 31(5), 1997

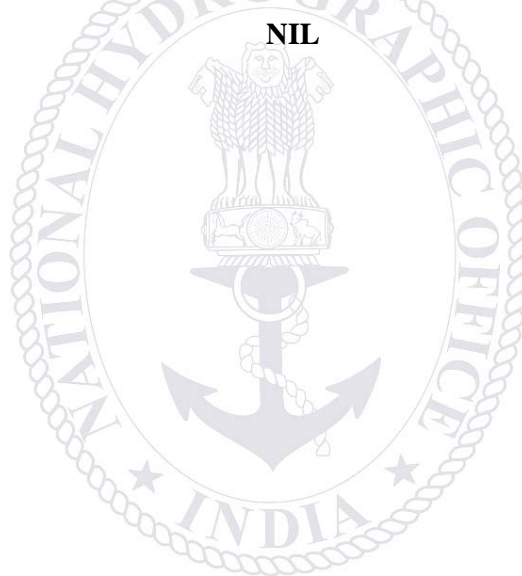
(Last correction: Edition No. 07 dated 01 Apr 09)

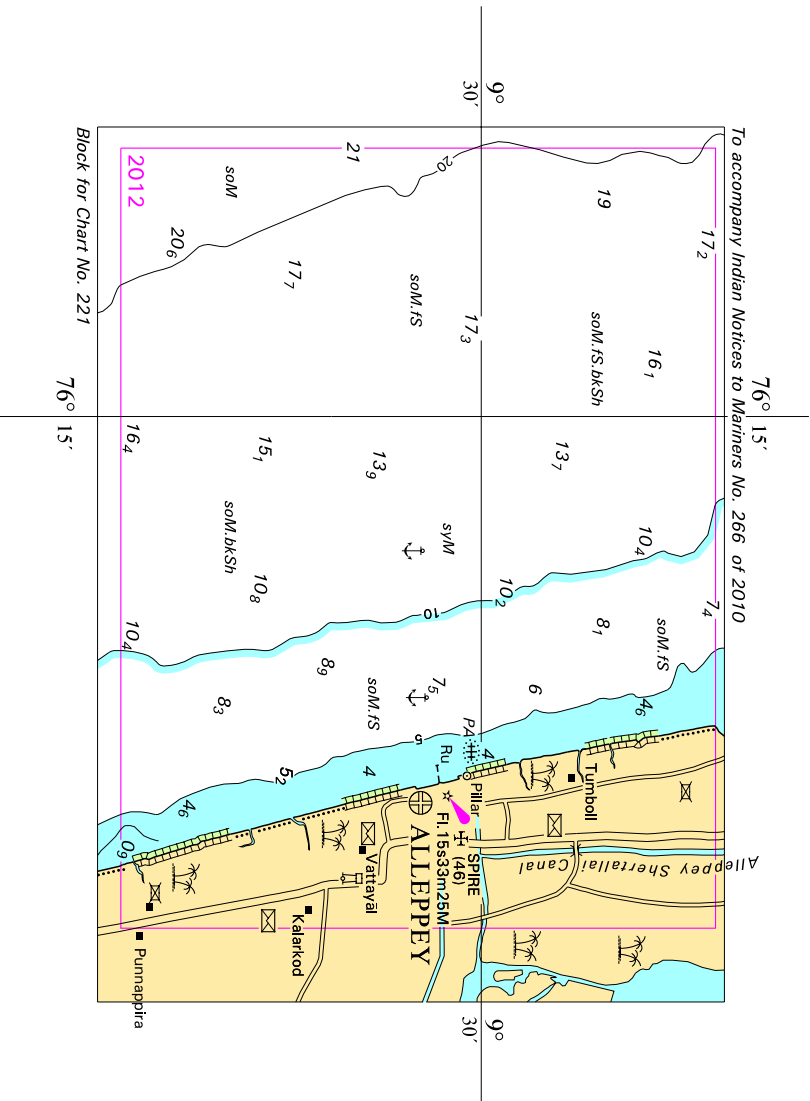
NIL

INP 31(6), 2005

(Last correction: Edition No. 18 dated 16 Sep 2010)

NIL



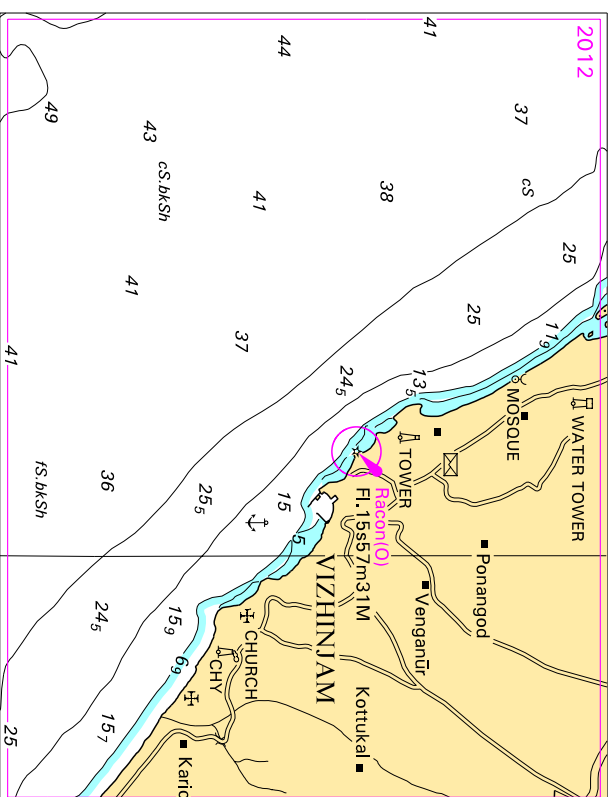


To accompany Indian Notices to Mariners No. 266 of 2010

Block for Chart No. 221

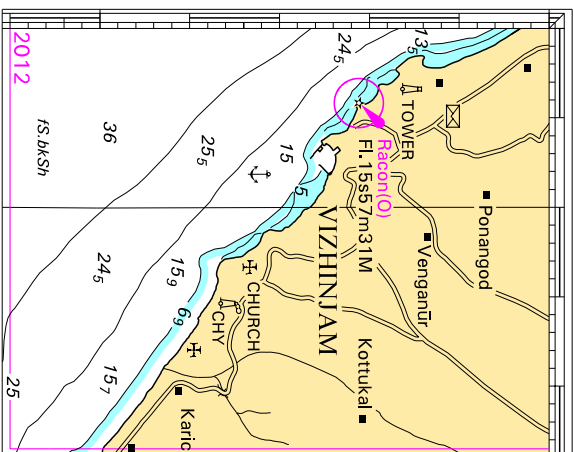
2012

To accompany Indian Notices to Mariners No: 262 / 2010



Block correction for chart No: 222

To accompany Indian Notices to Mariners No: 262 / 2010



Block correction for chart No: 223

SECTION – IX **REPORTING OF NAVIGATIONAL DANGERS**

Appeal to all Mariners

1. Mariners at sea whilst on passage, or whilst entering / leaving ports / harbours and other waterways, are requested to look out for new or suspected dangers to navigation, changes in aids to navigation, or corrections to published charts and Sailing Directions. Whenever any such changes / dangers are observed, mariners are requested to notify the same to the Chief Hydrographer to the Government of India at the following address: -

National Hydrographic Office
107-A, Rajpur Road,
Dehradun - 248001
(UTTARAKHAND), INDIA
e-mail: - inho-navy@nic.in, msis-inho-navy@nic.in
Fax No.: +91-135- 2748373
WEB: www.hydrobharat.nic.in

Instructions for filling up IH 102

2. Kindly follow the instructions below in order to help the Hydrographic Office (the recipient) to quickly issue NAVAREA warning / Notice to Mariners for the benefit of all other mariners at sea.

Position Reporting

3. When a position is defined by bearings (true or magnetic to be specified) more than two bearings should be used in order to provide a check. Distances observed by Radar should be corrected for index errors. Latitude and Longitude obtained from GPS / DGPS should specify the datum (WGS 84 or other). A copy / tracing from the largest scale chart may be used for forwarding details, with the corrections and additions being shown thereon in red.

Depth Reporting

4. When soundings are obtained using Echo Sounders, the echo-gram should be duly annotated with date, time, position and depth, etc., before enclosing it with the Form IH 102. It is important to state whether echo sounder is set to register depths below the surface or below the keel; in the latter case the vessel's draught should be given. Time and date should be given in order that corrections for the height of the tide may be applied where necessary. The make, name and type of echo sounder should also be given. Care should be taken to set the echo sounder to the largest scale / phase, so as to obtain maximum details of echo of the feature. Efforts should be made to identify and negate false echoes if any.

5. Reports, which cannot be confirmed or are lacking in certain details should not be withheld. Limitations or shortcomings should be duly notified in the form.

6. Reports on shoal soundings, uncharted dangers and navigational aids out of order should be reported through fastest available means at the mariner's discretion, and also be made by radio to the nearest coast radio station. The draught of modern tankers is such that any uncharted depth under 50 metres should be of sufficient importance to justify a radio message.

7. Port information should be forwarded on form IH 102a together with IH 102. Form 102a contains the information required for Sailing Direction and should be used as an *aide memoir*. Where there is insufficient space on the form, additional sheet should be used.

Please Note: - The receipt of all Hydrographic Notes will be duly acknowledged by the Hydrographic Office. Normally, the sender's ship or name is quoted as the source when the Notices to Mariners reporting the change is issued, unless the information is received through a foreign Notices to Mariners. Further communication from the Hydrographic Office to the sender of the hydrographic note will only be necessary to verify unusual features or abnormal values reported.

I.H. 102**HYDROGRAPHIC NOTE****(For Reporting Navigational Dangers/ Changes observed at Sea by Mariners)**

1. Name of ship or sender	
2. Address of sender	
(i) E-mail	
(ii) Fax No.	
(iii) Tel. No.	
3. General Locality	
4. Chart / Publication Affected:	
(i) Chart published by INHO / UKHO / other (Specify).	
(ii) Chart No.	
(iii) Edition Date.	
(iv) Latest Edition of Indian N to M held	
5. Details of Changes / Dangers Observed.	
Object of Change.	
(i) Date/Time of observation	
(ii) Charted Observed	
(iii) Position/Area	
(a) Bathymetry:	
(i) Depth	
(ii) Depth Contour	
(iii) Channel Depth	
(b) Navigational Dangers:	
(i) New Shoals	
(ii) New Rocks	
(iii) New Reefs	
(iv) New Wrecks	
(v) New Nav-aid (Specify)	
(c) Casualties to existing Nav-Aids:	
(i) Buoys	
(ii) Lights	
(iii) Fog signals	
(iv) Racons	
(v) Transit Marks	
(vi) Leading Lines	
(vii) Clearance bearings	
(d) Designated Areas:	
(i) Exercise Areas	
(ii) Prohibited Areas	
(iii) Pilot Station	
(iv) Anchorage	
(v) Foul Ground	

(e) Port Information:	
(i) Berthing	
(ii) Cranage	
(iii) Tugs	
(iv) Dry Docks	
(v) Repair Facilities	
(vi) Pilotage	
(vii) Fuel	
(viii) Water	
(ix) Any other (Specify)	
(f) Environmental Data	
(i) Met information	
(ii) Tides and Tidal Stream	
(iii) Pollutants	
(iv) Effluents	
(v) Marine Life / Habitats	
(g) Other changes, if any, with Details:	
6. Information on the Positions of Danger / Changes Reported above:	
(a) Positioning System used	
(b) Datum [WGS/Everest/ Local (Specify)]	
(c) Accompanying plots / photographs if any	
7. Information on the Soundings / Depths Reported above:	
(a) Echo Sounder (Type) used	
(b) Draught of Vessel set on Echo Sounder	
(c) Observed water depth vis-à-vis charted depth	
(d) Echo-gram accompanying this report: Yes / No	
(e) Whether voltage drop existed in equipment at observation time	
(f) Data and Time of depth observation	
8. Limitations if any in Reporting the changes above	

Filled By
(Name & Designation)

Checked by
(Name & Designation)

Place
Date

I.H. 102a**HYDROGRAPHIC NOTE FOR PORT INFORMATION****(For Reporting Changes to Port Information)**

1 Name and Address of the Port.	
(a) Name	
(b) Address	
(c) Phone No's	
(d) Web Site	
(e) E Mail	
2 General Remarks	
(a) Principal activities and trade	
(b) Number of ships and tonnage handled per year	
(c) Maximum size of draught of vessel handled	
(d) Soft copy of port handbook	
3 Anchorages	
(a) Type/Purpose	
(b) Minimum depth	
(c) Shelter afforded	
(d) Holding Ground	
(e) Recommended Pilotage to the anchorages	
(f) Request Pilots appreciation to the approach of anchorage area	
4 Pilotage	
(a) Authority for request	
(b) Embarkation Position	
(c) Regulations	
(d) Documents to be provided	
(e) Request Pilots appreciation to the approach of inner harbour and berths.	
(f) Information on Vessel Traffic Management System (VTMS).	
(g) Navigational aid	
(i) List of beacons	
(ii) Buoys	
(iii) Lighthouses	
(iv) Any other information	
5 Directions	
(a) Entry and berthing information	
(b) Tides (Range of the tides)	
(c) Tidal stream information in the area	
(d) Type of season (max/min temperature, rain fall, wind speed and direction)	
6 Pollution Control	
Local regulation in force (if any)	

7 Tugs	
(a) Number available/Type	
(b) Maximum HP/Bollard Pull	
(c) Requesting authority	
(d) Availability times	
(e) Communication with tugs	
(f) Hiring charges	
8 Berthing and wharves	
(a) Type & number of berths available	
(b) Length	
(c) Depth alongside	
(d) Facilities available	
(e) Procedure for requesting berth and hiring charges.	
9 Cargo Handling	
(a) Containers	
(b) Lighters	
(c) Roll on / Roll off etc.	
10 Cranes	
(a) Brief details max lifting capacity, height of boom at warf level and outreach	
(b) Container handling facilities.	
11 Bridges	
Vertical clearance	
12 Repairs	
(a) Hull machinery and underwater	
(b) Ship and boat yards	
(c) Docking or slipway facilities (size or dimensions of vessels handled)	
(d) Hards and ramps	
(e) Divers/Diving Assistance	
13 Rescue and distress	
(a) Salvage, lifeboats, life guards etc	
14 Supplies	
(a) Fuel (type and quantities available)	
(b) Fresh water and rate of supply	
(c) Provisions	
(d) Chart agents	
15 Services	
(a) Radio/telegram/fax /telephone	
(b) Internet	
(c) Medical	
(d) Quarantine	
(e) counsel	
(f) Ship chandlery and stevedores	
(g) Compass adjustment	
(h) Tank cleaning	
(j) Hull painting	
(k) Police	

(l) Ambulance	
(m) Fire fighting (fixed and mobile facilities)	
(n) Navigational warning and weather bulletin	
(p) garbage disposal	
(q) Waste oil disposal	
(r) Helicopter landing facilities	
16 Communications	
(a) Road, rail and air services available	
(b) Nearest airport or airfield	
(c) Port radio and information service (Frequencies and operating hours)	
17 Port Authority	
Designation, address and phone number	
18 Security	
(a) Security of ports/ International Ship and Port Facility (ISPS) competence	
(b) Container Security Initiative (CSI)	
(c) Custom and Immigration regulation in ports	
19 Small craft facilities	
(a) Information and facilities for small craft yachts visiting the port	
(b) Yacht clubs, berths etc	
20 Shore leave	
21 Clubs recreation	
(a) information kiosk (location)	
(b) Foreign exchange firms/banks (within/near port area)	
(c) Places of interest near port	
(d) Hotels/ restaurants (Type of food served e.g Chinese, continental etc)	
22 Views (duly annotated), photographs of the approaches, leading marks, the entrance to the harbour etc.	
23 Any other information considered to be useful for the mariners	

Filled By
(Name & Designation)

Checked by
(Name & Designation)

Place
Date



FOR 24 X 7 SAR ASSISTANCE IN INDIAN SRR

Email: indsar@vsnl.net

NATION WIDE SAR TELE: 1554 (LAND LINE)

INMARSAT C (IOR) 441907210 CODE: 43 (TOLL FREE)

AFTN: VABBYXYC